

October 2009

Trapeang Prasat District Data Book 2009

District Code Nr: 2205

Otdar Meanchey Province

Table of Contents

List of Abbreviations	i
Glossary.....	ii
Preface	vi
Introduction	vii
SECTION A: GEOGRAPHY	1
1 Administration and Infrastructure.....	3
2 Land Use and Natural Resources.....	5
3 Geography	7
3.1 Land Area	7
3.2 Distances between Offices	7
SECTION B: DISTRICT PROFILE	9
1 General Information	11
1.1 Population of the District.....	11
1.2 Occupations	12
1.3 Property	14
2 Infrastructure and Economy.....	16
2.1 Roads in meters over 3 years.....	16
2.2 Sewerage Pipes in meters over 3 years.....	16
2.3 Drainage and Bridges	16
2.4 Services in the District	16
2.5 Agriculture.....	17
3 Social Aspects	29
3.1 Education	29
3.2 Health.....	34
3.3 Water and Sanitation	36
3.4 Vulnerable groups.....	40
3.5 Migration	42
4 Natural Resources and Environment (NRE).....	44
4.1 Families involved with NRE issues over 3 years	44
4.2 Percentage of Families involved with Natural Resource issues, by Commune, for 2008	44
4.3 Percentage Houses with access to Garbage collection and Families affected by environmental Pollution, by Commune, for 2008	44
4.4 Percentage Families using chemical Fertilizer and chemical Pesticides, by Commune, for 2008 ..	44
5 Administration and Security	45

5.1	Birth Registration across 3 years.....	45
5.2	Number of unregistered Infants born in 2008, by Commune	45
5.3	Registered criminal Cases over 3 years	45
5.4	Registered criminal Cases per 10,000 people, by Commune, for 2008.....	45
5.5	Number of registered Land Disputes, by Commune, in 2008	45
6	Gender	46
6.1	Registered Domestic Violence over 3 years.....	46
6.2	Percentage of registered cases of Families experiencing domestic Violence, by Commune, in 2008	46
6.3	Women's involvement over 3 years.....	46
6.4	Percentage of Female Participants in Civil Society and of 18-60 year women with uncertain Jobs, by Commune, in 2008	47
6.5	Female-headed Households over 3 years.....	47
6.6	Percentage female-headed Households and with Children of less than 5 years old, by Commune, in 2008	47
7	Indigenous People in the District	48
7.1	Ethnic Minorities in the District over 3 years.....	48
7.2	Other Minorities in the District over 3 years.....	48
	SECTION C: PLANS AND PROJECTS	49
8	Priorities and Plans	51
8.1	Priorities of Commune Councils for 2009 in the District by Sector	51
8.2	Temporary Agreements by Commune, for 2009	56
8.3	Outputs, estimated and actual costs of C/S Fund Projects between 2005 and 2008, by Commune	69
8.4	Total Expenditure on C/S Fund Projects by sector and commune between 2005 and 2008.....	70
8.5	Actual 2009 C/S Fund projects by Commune	70
9	District level Projects from 2006 to 2009	71
9.1	District Initiative Infrastructure Projects from 2006 to 2009	71
9.2	District Initiative Service Projects from 2006 to 2009	72
9.3	Inter Commune Council Projects in 2008 and 2009	72
9.4	Other Projects in 2008 and 2009	72
	SECTION D: SERVICES AND ORGANIZATIONS	75
10	Infrastructure.....	77
10.1	Length of and Expenditure on Roads in 2008, by District	77
10.2	Scale of and Expenditure on Irrigation in 2008, by District.....	77
10.3	Power Supply in 2008, by District	78
11	Health Facilities.....	79

11.1 Health Facilities in the Province, by Operational District.....	79
11.2 Health Facilities and Staff in the province, by Operational District.....	80
11.3 Deliveries in 2007 in the Province, by Operational District.....	80
12 Education	81
12.1 Schools, Classes, Students, Staff, for for all levels, for 2007/2008 by District.....	81
12.2 Characteristics of Schools and School Principals for 2007/2008 by Commune	81
12.3 Enrolment by Level of Education, 2006/2007 by Commune	82
12.4 Enrolment by Level of Education, 2007/2008 by Commune	82
12.5 Aspects of Enrolment for 2007/2008 by Commune.....	82
12.6 School Buildings for all schools in the District for 2007/2008, by Commune	83
12.7 Conditions of Classrooms and Existence of Separate School Office and Library, by Commune	83
12.8 Community Participation and Financing across all schools in the District for 2007/2008 by Commune	83
12.9 Percentage Student Flow Rates and Graduation by level 2006/2007, by Commune	84
13 Staff and Resources at the District	85
13.1 District Councilors elected in 2009	85
13.2 Committees of the Council.....	85
13.3 Board of Governors.....	85
13.4 Offices under Sala Krong, Sala Srok and Sala Khan	86
13.5 Municipality/District/Khan line offices.....	86
13.6 Properties and Equipment of District Administration	87
13.7 Registered Revenue of the District Administration in 2008	88
13.8 Services in the District	88
13.9 Civil Society Organizations active in the District.....	88
13.10 Private Sector Organizations.....	89
SECTION E: POVERTY DATA	91
14 Data on Poverty	93
14.1 Predicted Poverty Rates for 2009, by commune	93
14.2 Poverty data from survey.....	93

List of Abbreviations

#	Number
AGR	Agriculture
BR	Birth Registration
C. Pilot	Piloted Commune
C/S	Commune / Sangkat
CBO	Community-Based Organization
CDB	Commune Database
CDPD	Commune Development and Planning Database
CIP	Commune Investment plan
CLTS	Community Led-Total Sanitation
Comm.	Commune
Com Cov	Commune Covered
CPA	Complementary Package of Activities
CPS	Community Preschool
CCWC	Commune Committees for Women and Children
DANIDA	Danish International Development Agency
DDLG	Democratic Development and Local Governance Project (EC-UNDP)
DFID	Department For International Development (UK)
DIP	District Initiative Project
DIS	District Information System
District PDRD	District Office of Rural Development
District WP	District Work Plan
DIW	District Integration Workshop
DoLA	Department of Local Administration
Dr	Doctor
DWRM	District Office of Water Resource and Meterology
ECD	Early Childhood education (part of PE)
EMIS	Education Management Information System
Event IC	Celebration of International Days
FDH	Former District Hospital
GTZ	German Society for Technical Cooperation (Gesellschaft für Technische Zusammenarbeit GmbH)
Ha	Hectare
HC	Health Center
HC (NB)	Health Center (no building)
HH	Headed Household
HSI	Intervention for Health
HP	Health Post
HW	Hand Washing
ICC	Inter Commune Council
IFAD	International Fund for Agricultural Development
IND	Industry
Inter-commune	Inter-Commune Project Management Committee or Inter-commune project
IO	International Organization
LASED	Land Allocation for Socio-Economic Development
LGCR	Local Governance for Children's Rights
M&E	Monitoring and Evaluation
MA	Medical Assistant
MoEYS	Ministry of Education, Youth and Sports
MoH	Ministry of Health

MoP	Ministry of Planning
MPA	Minimum Package of Activities
MW1	Primary Midwives
MW2	Secondary Midwives
n/a	Not available
NCD	National Contracts Database
NCDD	National Committee for Sub-National Democratic Development
NGO	Non-Governmental Organization
NRML	Natural Resources Management and Livelihood
NU1	Primary Nurse
NU2	Secondary Nurse
OD	Operational District
ODF	Open Defecation Free
Ope. Costs	Operational Costs
Others	Other Staff
PBW	Public Works
PDoEYS	Provincial Department of Education, Youth and Sport
PDRD	Provincial Department of Rural Development
PDWRM	Provincial Department of Water Resource and Meteorology
PE	Parenting Education
PHAST	Participatory Hygiene and Sanitation Transformation
PHD	Provincial Health Department
PID	Project Information Database
PMC	Project Management Committee
Pop 04-05	Population Covered 2004 or 2005
PSDD	Project to Support Democratic Development through Decentralization and Deconcentration
RRD	Rural Road Development
RH	Referral Hospital
RILGP	Rural Investment and Local Governance Project
RPRP	Rural Poverty Reduction Program
RuLIP	Rural Livelihoods Improvement Program
SIDA	Swedish International Development Cooperation Agency
SPPA	Senior Provincial Program Advisor
TBA	Traditional Birth Attendant
UNDP	United Nations Development Project
UNICEF	United Nations Children's Fund
Vil	Village
Vil Cov	Village Covered
VIL-HC	Distance from Village to Health Center
WASH	Water, Sanitation and Hygiene
WRM	Water Resource and Meteorology

Glossary

C/S Fund: The Commune/Sangkat Fund is established and managed by the Government of Cambodia to provide financial support for development projects and administrative costs of Commune/Sangkat Councils. The amount is determined as a percentage of the National Budget (for 2009: 2.8% over the 2008 budget) and is expected to increase gradually over the years. The total 2009 budget under this fund is \$ 27,643,902 (of which \$ 19,272,170 is for Development Projects and \$ 8,371,731 for Administration). Under the Rural Investment and Local Governance Project the World Bank currently reimburses the costs of development projects if these meet the Bank's criteria.

CDB: the Commune Data Base is a national database, compiled by the Ministry of Planning, on the basis of detailed questionnaires, completed at village and commune level, which are then sent to the Departments of Planning for data entry. The most recent round of data collection took place at the end of 2008 (and is reflected in the District Data Books). Commune, District and Provincial Profiles can be generated from this database and should be available from provincial Departments of Planning.

CDPD: the Commune Development and Planning Database is a database maintained by Departments of Planning and Ministry of Planning, recording proposed activities as determined and prioritized by Commune and Sangkat Councils; the Temporary Agreements between these councils and supporting agencies, as decided at District Integration Workshops and details on projects that actually take place at commune, district and provincial levels.

CIP: The Commune Investment Plan is a rolling three-year plan, developed and decided by the Commune or Sangkat Council. It sets priorities and identifies the projects proposed for the years to come.

Commune and Sangkat (C/S): the Communes (in rural areas) and Sangkats (in urban areas) are the lowest and smallest units of local government. Councils are elected directly, once in five years, for the 1417 Communes and 204 Sangkats. In the C/S there are 14,119 villages, which have Village Chiefs, but don't constitute a formal level of local government.

DIP: the District Initiative Project is jointly supported by the MDLF (Multi-Donor Livelihood Facility (supporting the NRM&L Program)) and PSDD. In 2009 it covers 106 districts, 60% of the total in the country, with a budget of \$ 3.2 million. It is focused on capacity development in planning, democratic development, public competitive procurement, financial management and service delivery.

DIS: The District Information System is a national database maintained by NCDD, recording resources, staff, revenue, infrastructure and equipment available in the 193 Districts and Khans throughout the country. The last update took place in July 2009.

District, Municipality and Khan constitutes the third level of Government in Cambodia. There are 159 rural Districts, 26 Municipalities and 8 Khans of Phnom Penh Capital. They all have Councils which were, for the first time, elected in May 2009, by the Commune/Sangkat Councilors. These councils have a mandate for 5 years.

DIW: District Integration Workshops are held between July and October, to bring Commune/Sangkat Councils, looking for support for their projects, together with the governmental and non-governmental agencies that may provide support.

ICC: Inter Communes Council projects are executed in 10 provinces under the Democratic and Decentralized Local Governance Project (DDLG). This five year project (2006-2010) is executed by Ministry of Interior and funded by the European Commission and UNDP. The project focuses on improving dialogue partnership and accountability; create a network of Commune Councils at the provincial and national level and support and contribute to local area development for poverty reduction. The work under the ICC component supports investments and services formulated through inter-commune dialogue and planning.

MEDiCAM: A non-profit and non-partisan membership organization for NGOs active in Cambodia's health sector. It is the primary networking agency for health-related NGOs.

NCDD: the National Committee for sub-National Democratic Development is the inter-ministerial body charged with the implementation of the Organic Law (a key legislative document, adopted in 2008, outlining the envisaged decentralization). NCDD also channels substantial financial assistance by a number of Development Partners, to projects and programs at various levels. This amounted to over \$ 91 million in 2008. More information at: www.ncdd.gov.kh. This website also provides access to reports, manuals, legal documents, details on projects and more.

OD: the Operational Districts are the districts as defined and used by the Ministry of Health. These do not coincide with the 193 (Administrative) Districts and Khans, as used by all other RGC agencies. The Operational Districts are usually larger, and so there are 77 Operational Districts against 193 administrative Districts and Khans. However they do fit within the boundaries of administrative provinces.

PID: The Project Information Database is the database maintained by NCDD at national and sub national level, to follow all aspects of projects by Commune and Sangkat Councils, including the C/S Fund projects

Provincial Investment Fund (PIF)

The Provincial Investment Fund is allocated to all Provinces and Municipalities according to a population based formula. Part of the fund is earmarked for support to planning activities of the Provincial / Municipal Department of Planning; and to gender mainstreaming activities of the Provincial Department of Women's Affairs. The remaining "un-earmarked PIF" is allocated by PRDC to sectoral technical departments against established criteria and in response to proposals with prioritisation taking into account: priorities formulated by the CS Councils and aggregated by District into District Priority Activities Matrices (DPAM); alignment with national planning and poverty alleviation criteria, complementarity with other planned activities; and performance of the Department concerned in implementation of activities in previous years. With this provisional allocation, the Department then programs activities through the District Integration Process. Finally, the agreed activities, plus support costs amounting to no more than 25% of the total, are included in a sub-contract signed between PRDC and the Department, pursuant to the overall PSDD contract signed between NCDD and PRDC. Total budget has been around \$ 2 million per year.

Province: the 23 Provinces and Phnom Penh Capital City represent the 2nd layer of government. They vary in size, from very small, like Kep (approx. 36,000 people) and Pailin (approx. 70,000 people), or large but with small populations, like Mondulkiri (over 60,000 people), and Ratanakiri (over 153,000) to densely populated and large, like Kampong Cham (over 1.7 million people) and Kandal (approx. 1.4 Million people).

PSDD: the Project to Support Democratic Development through Decentralization and Deconcentration is funded by DFID (UK), SIDA (Sweden) and UNDP and runs from 2006 till the end of 2010 (including a one year extension). Annual budgets range from \$ 11 million to over \$ 18 million. The project provides core technical support to NCDD and to the provinces, financial support to the C/S Fund, District Initiative, Provincial Investment Fund and capacity building support through training, studies and advisory services.

RILGP: The Rural Investment and Local Governance Project is a World Bank funded project that provides substantial support to C/S Fund projects and to developing the required infrastructure, policies, systems and skills. It started in 2003 with a Loan for \$ 22 million for 2003-2007 and was then extended with a Grant of \$ 36 million for the period of 2007-2010. Discussions about a possible RILGP 2 are taking place between RGC and the World Bank.

RPRP: the Rural Poverty Reduction Project is a seven year project from 2004 till 2010, funded by IFAD and UNDP and implemented through the Ministry of Agriculture, Forestry and Fishery, supported by the Ministry of Interior and facilitated by NCDD. The project is active in the provinces Prey Veng and Svay Rieng and focuses on 120,600 households below poverty line. The objective is poverty reduction with the active participation of the poor through improved livelihoods, Strengthened capacity, Sustainable farming systems and natural resource management, new and/or rehabilitated infrastructure development, increase accessibly to technology, services and markets for their economic and social development.

RULIP: the Rural Livelihoods Improvement Project is implemented by the Ministry of Agriculture Forestry and Fisheries (MAFF)' Project Support Unit- PSU, with the NCDD playing the role of cooperating agency. Funded by IFAD and UNDP, the project will run till 2014. The target group consists of poor households who have little or even no land, few livestock or other assets and often many dependents. The main goal of the project is to directly or indirectly improve the livelihood systems, food security and incomes of a total of 33,900 rural poor, ethnic minority and female headed households in targeted village of Kratie, Preah Vihear and Ratanakiri provinces in a sustainable manner.

Seth Koma: The UNICEF funded Seth Koma program focuses on measurable action for children and women. During 2006 -2010 it is implemented in six provinces. Government and UNICEF pursue a set of inter-related goals, addressing critical stages of the life cycle of the child: a) Mothers have safe pregnancies and deliveries and healthy newborns; b) best possible start in life of infant; c) Children enter schools at the right age of six years; d) Children are protected from exploitation, abuse, violence, discrimination and other risks; and e) Youth and adolescents acquire life skills, express their views, participate in the decisions.

Preface

The Government of Cambodia attaches great importance to optimal use of scarce resources and to participatory planning and management at all levels. The Organic Law which was adopted in 2008 provides the legal context for further steps towards improving and decentralizing planning, management and monitoring, and towards greater accountability and transparency of institutions at sub-national levels.

The Government has established elected Councils at the sub-national levels, and we will progressively give them the responsibilities, together with the human and financial resources, to deliver a wide range of public services. They will be more democratic, more efficient, more transparent and accountable, better at addressing gender and other inequalities, and at fighting corruption. We recognize that development does not come from government alone; it needs the involvement of citizens, civil society and the private sector, and the new system will facilitate this.

A central element in this process is the availability of information on any aspect of development to all concerned parties. The newly elected Councillors at District and Khan level, line departments operating at these levels, but also NGOs, Development Partners, Commune Councillors and citizens throughout Cambodia need information on problems and requirements, resources and opportunities, services and agencies, plans and projects. They will need such information to better understand the present situation, set targets for the future, monitor progress, know what others are doing and to apply resources wisely and this is the reason the District Data books will be so valuable.

The District Data Books are a major step towards full transparency and towards informed planning and decision-making. They provide all available data at District, Khan, Commune and Sangkat level in easily accessible formats, in Khmer and English, through over 16,000 printed copies, CD-ROMs and the NCDD website.

This is the first time in Cambodia (and possibly in South East Asia) that such detailed information is made so widely available and NCDD should be commended for the hard work that has gone into this. We also thank the Ministry of Planning, which provided the detailed data of the Commune Data Base, the sectoral ministries and provincial authorities who contributed data and the Development Partners who provided financial support.

It is our sincere hope that the publication of the District Data Books will strengthen capacities, especially at district levels, for evidence-based development planning. We also hope that this information will deepen the understanding among Ministries, Provincial Authorities, Development Partners, NGOs and research agencies of the realities at commune and district levels.

We call upon all to use and distribute this information, complement or correct where appropriate and to contribute new data in the years to come.

Sar KHENG

Deputy Prime Minister, Minister of Interior and Chairman of NCDD

Introduction

Purpose

The purpose of the District Data Books is to bring together information on any aspect of life and development of Districts, Khans, Communes and Sangkat, together and make this widely available. The primary targets are the newly elected District Councilors, district level line departments, provincial agencies, Development Partners and NGOs operating at this level. They need detailed knowledge on current living conditions, natural resources, infrastructure, agriculture and other economic activities, current service levels, past and planned projects and available resources.

While much information exists on many of the above aspects, it is often hard to access that information and much is lost to reports, databases and statistics that are not widely shared. Data are often only available in one language and often out-of-date, and many reports cover only one sector or region.

We found that these problems are especially acute at the district level. Now that Districts are becoming a much more significant level of local government and development planning, there is an urgent need for wide-ranging data to be used for setting base-lines, planning and prioritizing, monitoring and learning.

Approach

We have attempted to identify and compile all available statistics, reports, maps and other data at district and/or commune level. From this we have selected information that is available for all or most districts, reasonably reliable and up-to-date, sufficiently detailed and of possible interest to development planners, decision makers, agencies and citizens.

The major sources of the information in these District Data Books are:

- a) The Commune Data Base information over the years 2006 to 2009 (the most recent data were collected late last 2008), as compiled by the Ministry of Planning
- b) Detailed information directly collected from the Ministry of Health, the Ministry of Education, Youth and Sports and (for maps) the Ministry of Land Management, Urban Planning and Construction
- c) The Project Information Database (PID) at NCDD (up-to-date)
- d) The Commune Development and Planning Database (CDPD) (up to date)
- e) The District Information System (DIS) (updated per Mid 2009)
- f) Direct data collection at provincial and district level on private sector, irrigation, roads, and electricity, through provincial agencies
- g) Medical data collected from MEDiCAM
- h) The ID Poor Project – for poverty data on a number of provinces and districts
- i) NCDD's work on predictive poverty rates
- j) Specific projects for outputs, plans and budgets (Seth Koma, RILGP, RPRP and ICC)

Limitations of the data

We are fully aware that the data we collected are not always complete, consistent or correct. While we have rejected information that was wrong or very incomplete, we decided not to aim for statistical and scientific perfection, but to include information that is useful, relevant

and comprehensive. We also accepted different sources for the same data as this may encourage discussion on the quality of the respective data.

We strongly encourage anyone who notes errors or incompleteness in these data to contact us and to share their data. We hope that the next round of producing such District Data Books can draw on wider sources and more complete data.

We encourage the District Administrations, who receive these data also in digital format, not only to use these for their planning and monitoring, but also to start correcting and updating these data and to share new data with NCDD for future use.

Contents

The information in the following pages is organized in five sections:

- a) **Geographical data:** this section provides maps on infrastructure and administration and on land use and natural resources management. These maps are also provided in large format to all Districts and Khans.
- b) **District Profile:** this presents wide ranging data, covering 2006 – 2009, at district and commune level, extracted from the Commune Data Base, but edited for better understanding.
- c) **Plans and Projects:** this section presents development priorities determined by Commune and Sangkat Councils, Temporary Agreements, outputs and expenditure of major projects at Commune and District level over 2006 – 2008 and plans and budgets for 2009.
- d) **Services and Organizations:** this section provides details on key infrastructure (roads, electricity, irrigation systems) and services in health and education at district and commune level. It also provides an inventory of resources at the District Administration, NGOs operating in the district and private sector agencies active in the district.
- e) **Poverty Data:** this section provides predicted poverty rates for 2009 for all districts and communes and detailed poverty data compiled and processed by the ID Poor project for those that have been covered by this project.

The future

It is our hope that this is the start of a longer-term process. We hope that a next edition of these District Data Books will offer more comprehensive, correct and up-to-date information. We hope that the District Administrations will not only start using this information, but also improve and update it. For this they are all provided with the full data set in digital format.

We invite agencies, projects and experts to send reports, statistics and maps that could be used for a next version to us and we invite all users of the District Data Books to inform us about errors, updates and inconsistencies. Please contact us through info@ncdd.gov.kh

We now invite you to browse through this data book. You may open this randomly or use the table of contents and go to the aspects that have your special interest.

We hope that you will be informed, surprised and assisted. We hope, above all, that this information will lead to a deeper understanding of causes and effects of poverty, to purposeful decisions on how to tackle those causes and to greater transparency in using scarce resources for the benefit of all.

Martin de Graaf
Program Advisor, PSDD/NCD

SECTION A: GEOGRAPHY

1 Administration and Infrastructure

Please see separate folder containing A3 maps.

2 Land Use and Natural Resources

Please see separate folder containing A3 maps

3 Geography

3.1 Land Area

Total Land Area (ha)	Forest Land Area (ha)		Cultivation Land Area (ha)	Construction Land Area (ha)	Other Land Area (ha)
	Total	Flooded Forest Area			
184195	32652	0	145205	5671	667

3.2 Distances between Offices

Location	Distance (Km)
From District Office to C/S Office of Bak Anloun	0
From District Office to C/S Office of Ph'av	6
From District Office to C/S Office of Ou Svay	19
From District Office to C/S Office of Preah Pralay	12
From District Office to C/S Office of Tumnob Dach	6
From District Office to C/S Office of Trapeang Prasat	13

SECTION B: DISTRICT PROFILE¹

¹ All data in this section come from the Commune Database (CDB) unless otherwise specified. These include primarily new CDB data, collected late 2008, and some data from earlier years. Please note that percentages are rounded to the nearest whole number.

1 General Information

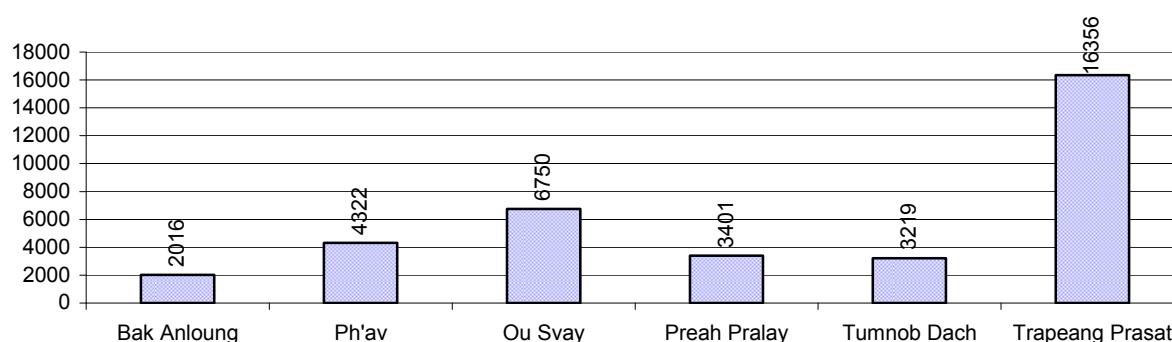
1.1 Population of the District

1.1.1 Total Population

Number of families	2005	2006	2007	2008
Total number of families	4,360 families	5,280 families	5,951 families	7,828 families
Increase (+)/Decrease (-) in nr of families		21%	13%	32%
Total population	20,812 pers	24,956 pers	27,939 pers	36,064 pers
Increase (+)/Decrease (-) in nr of people		20%	12%	29%
Number of female Headed Households (HH)	478 families	939 families	758 families	1,104 families

Note: Percentages of population and increase/decrease are calculated on basis of the previous year. A negative sign in front of the percentage indicates a decrease in population.

1.1.2 Population, by Commune, in 2008



1.1.3 Population, by Age Group, over 3 years

Population by age group	2006	2007	2008	
	%	%	%	Number
Age 0-5 years (as percentage of the population)	16%	17%	16%	5,803 persons
Male 0-5 yrs	51%	52%	50%	2,926 persons
Female 0-5 yrs	49%	48%	50%	2,877 persons
Age 6-17 (as percentage of the population)	34%	33%	30%	10,871 persons
Male 6-17 yrs	52%	52%	51%	5,577 persons
Female 6-17 yrs	48%	48%	49%	5,294 persons
Age 18-60 (as percentage of the population)	48%	49%	51%	18,496 persons
Male 18-60 yrs	51%	50%	49%	9,151 persons
Female 18-60 yrs	49%	50%	51%	9,345 persons
Age 61 above (as percentage of the population)	2%	2%	2%	894 persons
Male 61	57%	52%	51%	458 persons
Female 61	43%	48%	49%	436 persons

Note: The overall percentage for each age group is calculated on the basis of the total population. The gender distribution of each group is calculated on the basis of the population within that particular age group.

1.2 Occupations

1.2.1 Percentage of families with a particular Occupation over 3 years

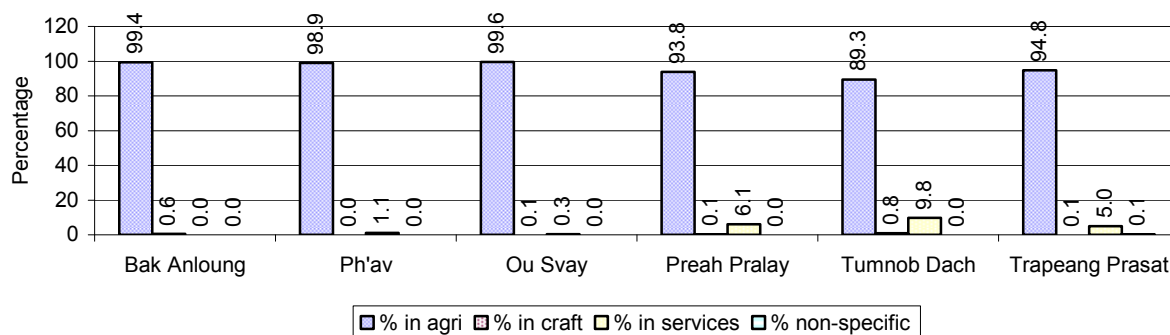
This table shows the percentage of the population who have a particular occupation (job), for example the percentage of the population in the district who are rice farmers, furniture crafter, trader, etc.

Description	2006	2007	2008	
	%	%	%	Number
Families whose main occupation is agriculture	96%	96%	96%	7,497 Families
Families whose primary occupation is rice farming	93%	93%	94%	7,391 Families
Families whose primary occupation is cultivating long-term crops	0%	0%	0%	11 Families
Families whose primary occupation is cultivating short-term crops	2%	2%	1%	66 Families
Families whose primary occupation is cultivating vegetable	0%	0%	0%	25 Families
Families whose primary occupation is fisherman	0%	0%	0%	0 Families
Families whose primary occupation is livestock farmer	0%	0%	0%	4 Families
Families whose primary occupation is NTFP collection	0%	0%	0%	0 Families
Families whose main occupation is craft work	0%	0%	0%	14 Families
Families, whose main occupation is in furniture craft, wooden, rattan, vine, bamboo	0%	0%	0%	11 Families
Families whose main occupation is in metal, aluminum, glass goods production	0%	0%	0%	1 Families
Families whose main occupation is food production	0%	0%	0%	1 Families
Families whose main occupation is tire, plastics and rubber goods production	0%	0%	0%	0 Families
Families whose main occupation is textile, clothing goods production	0%	0%	0%	0 Families
Families whose main occupation is in other production, not listed above	0%	0%	0%	1 Families
Families whose main occupation is services	4%	4%	4%	312 Families
Families whose main occupation is trade	3%	3%	2%	152 Families
Families whose main occupation is repair	0%	0%	1%	40 Families
Families whose main occupation is providing transport services	0%	0%	0%	33 Families
Families whose main occupation is providing other services	0%	0%	1%	87 Families
Families whose main occupation is not clear (or multi)	0%	1%	0%	5 Families

Note: The occupation percentages are calculated on the basis of the total number of families.

1.2.2 Percentage Families that work in one of four occupational sectors, by Commune in 2008

This table indicates the percentage of families involved in one of four occupation types: agriculture, craft, services or non-specific (other). Please note agriculture includes forestry activities such as cutting down trees and gathering gum from the trees.



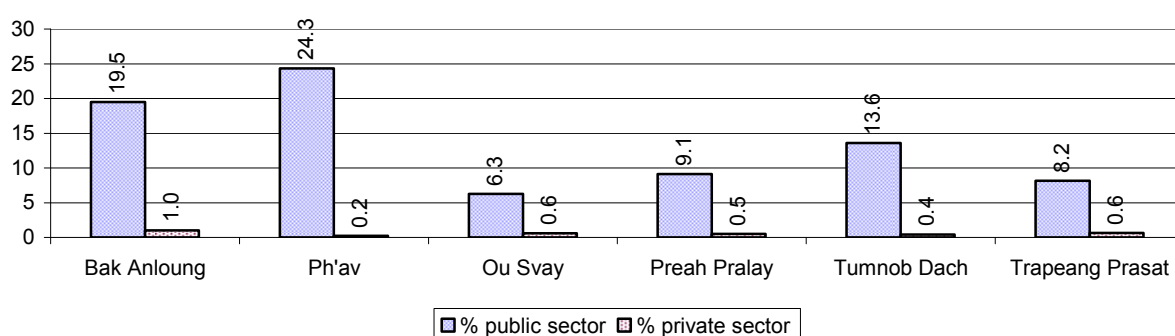
Note: Calculated on the basis of the total number of families within a commune.

1.2.3 Percentage of Families with public Sector, private Sector or uncertain Jobs, over 3 years

Description	2006	2007	2008	
	%	%	%	Number
Families that have a family member who is a government official, staff or worker	10%	8%	11%	866 families
Families that have a family member who is a private sector staff or worker	0%	0%	1%	45 families
Number of people aged 18-60 with uncertain/irregular jobs	0%	0%	6%	1,050 persons

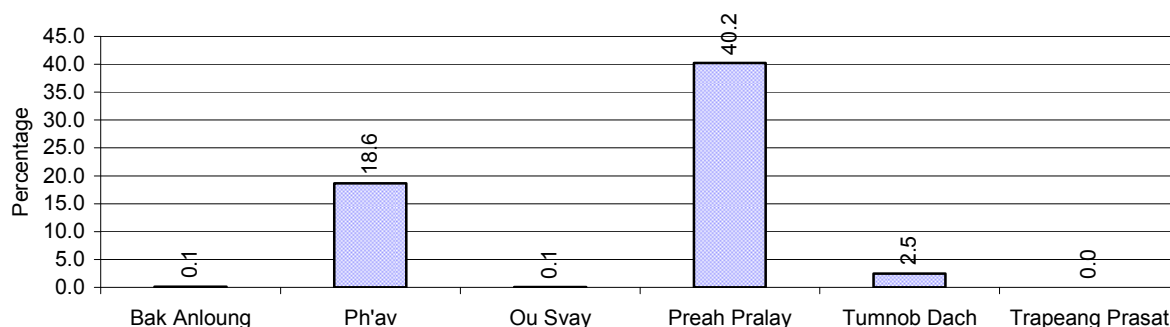
Note: In the first two rows percentages are calculated on the basis of the total number of families. In the third row the percentage is calculated on the basis of the total number of people aged 18-60 years.

1.2.4 Percentage of Families with public or private Sector Jobs, by Commune in 2008



Note: Calculated on the basis of the total number of families in the commune

1.2.5 Percentage of People aged 18-60 years with uncertain/irregular Jobs, by Commune, in 2008.



1.3 Property

1.3.1 Housing types and facilities over 3 years

This table shows the percentage of people living in a certain type of house. It also indicates how many houses have electricity or battery powered lights and how many have TV.

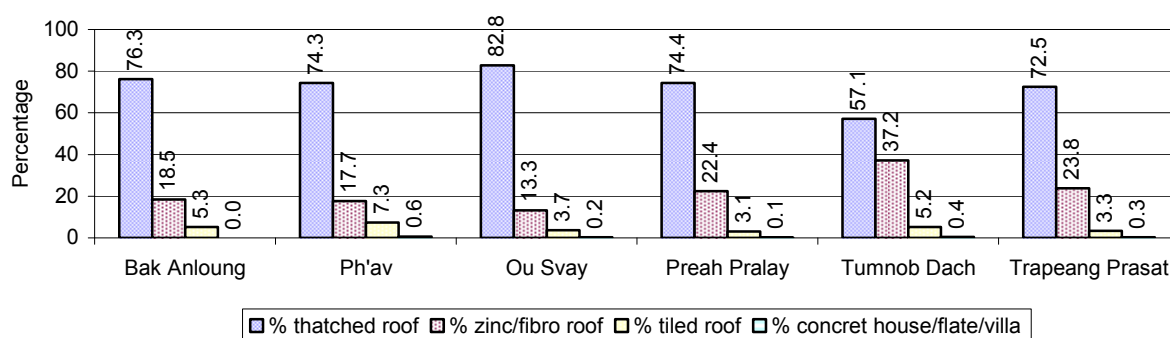
House Type	2006 %	2007 %	2008	
			%	Number
House with thatched roof	80 %	77 %	73 %	5,362 houses
House with zinc/fibro roof	19 %	20 %	22 %	1,610 houses
House with tiled roof	2 %	3 %	4 %	300 houses
Flats/apartments (with many families living)	0 %	0 %	0 %	6 houses
Concrete house or flat (with one family living)	0 %	0 %	0 %	16 houses
Villa house	0 %	0 %	0 %	3 houses
Houses with electricity	3 %	7 %	6 %	415 houses
Houses with battery light	32 %	52 %	50 %	3,628 houses
Houses with TV	21 %	27 %	29 %	2,119 houses

Note: Calculated against the total number of houses

1.3.2 Families living on public Land or without a permanent House

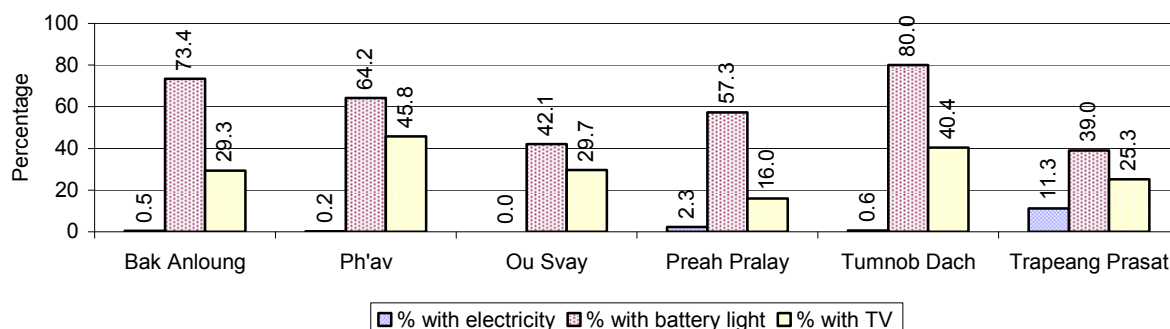
Living situation	2006	2007	2008
Families living in a house on public land	13 families	8 families	17 families
People, without permanent housing	1 person(s)	1 person(s)	8 person(s)

1.3.3 Percentage of Population living in a particular type of House, by Commune, in 2008



Note: Calculated against the total number of houses in each commune

1.3.4 Percentage of Houses with Electricity, Battery Lights and/or TVs, by Commune, in 2008



Note: Calculated against the total number of houses in each commune

1.3.5 Types of Vehicles and their ratio to Families across 3 years

This table shows the number of families per vehicle in the district. The last column shows the total number of each type of vehicle in the district for 2008.

Description	2006 ratio	2007 ratio	2008	
			Ratio	Number
Bicycle and bicycle with trailer	2	2	2	3,352
Ox-carts and horse-carts	28	28	25	307
Motorbike/with trailer	4	3	3	3,073
Motor tri-cycle	N/A	N/A	78	100
Large Transportation				
Total number of cars/trucks	61	50	35	224
Locally made vehicles	278	229	290	27
Trucks for goods transport	251	161	100	78
Buses/mini buses for passengers	5,280	2,976	652	12
Family cars	115	112	73	107
Agriculture machinery				
Tractors used for plowing	880	372	326	24
Power-tillage used for plowing	10	7	7	1,142
Other type of machinery				
Other type of machinery	N/A	N/A	1,957	4
Water transportation				
Row boats	278	N/A	1,566	5
Total number of motor boats				
Motor boats used for fishing	N/A	N/A	N/A	0
Motor boats used for passengers	N/A	N/A	N/A	0
Motor boats used for goods transporting	N/A	N/A	N/A	0

Note: Ratio of families to a particular type of vehicle is the result of the total number of families divided by total number of that type of vehicle. Other types of vehicles, such as bulldozer, excavator, rollers etc. are not listed.

2 Infrastructure and Economy

2.1 Roads in meters over 3 years

Description	2006	2007	2008
Bituminous road	0 m	0 m	0 m
DBST, Macadam road	0 m	0 m	0 m
Concrete road	0 m	0 m	0 m
Laterite road	2,000 m	500 m	500 m
Constructed earth road	19,200 m	9,564 m	6,169 m
Un-constructed earth road	6,120 m	8,500 m	20,723 m

2.2 Sewerage Pipes in meters over 3 years

Description	Sewerage pipe length		
	2006	2007	2008
Total length of sewage pipe, diameter 30-50 cm	0 m	0 m	0 m
Length of newly constructed sewage pipe, diameter 30-50 cm	0 m	10 m	0 m
Length of sewage pipe, diameter 30-50 cm needs repair/rehabilitation	0 m	0 m	0 m
Total length of sewage pipe, diameter of pipe 60-100 cm	40 m	32 m	6 m
Length of newly constructed sewage pipe, diameter 60-100 cm	87 m	160 m	0 m
Length of sewage pipe, diameter 60-100 cm needs repair/rehabilitation	0 m	0 m	0 m
Sewerage pipe, diameter of pipe over 100 cm	4 m	0 m	0 m
Length of newly constructed sewage pipe, diameter over 100 cm	53 m	0 m	0 m
Length of sewage pipe, diameter over 100 cm needs repair/rehabilitation	0 m	0 m	0 m

2.3 Drainage and Bridges

Construction Type	2006		2007		2008	
	place(s)	Length	place(s)	Length	place(s)	Length
Single pipe culvert	5	23m	0	0 m	0	0 m
Double-pipe culvert	0	0m	0	0 m	0	0 m
Box pipe culvert	0	0m	0	0m	0	0 m
Wooden bridge	4	45m	0	0m	0	0 m
Concrete bridge	0	0m	0	0m	0	0 m
Bale bridge	0	0m	0	0m	0	0 m
Spillway construction	1	10m	1	20m	0	0 m

2.4 Services in the District

Descriptions	Number of places by year		
	2006	2007	2008
Public			
Electricity generating stations	1	17	24
Health clinics	8	7	16
Private			
Bicycle and motorcycle repair places	16	23	51
Agricultural machinery, tools and equipment repair places	9	10	17
Electronic tool repair places	3	2	0
Battery-charging services	19	25	40
Handicraft places, wooden furniture and forest by-products	15	16	25
Other handicraft places (excluding furniture)	0	0	0

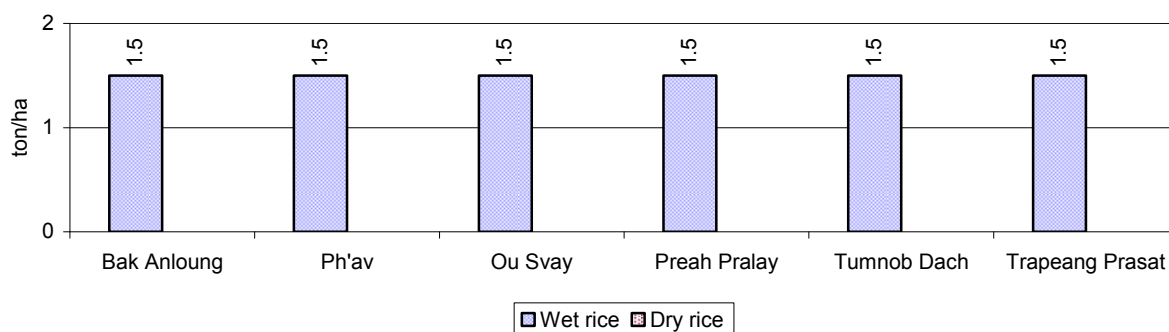
Descriptions	Number of places by year		
	2006	2007	2008
Small-scale services (hairstresser, phone service, massage, Karaoke, etc)	12	12	35
Small-scale food shop businesses (Food, groceries, drink shop, etc)	11	13	26
Small-scale rice mills	144	135	199
Medium or large-scale rice mills	6	9	33
Small-scale markets	2	3	1
Large-scale market	0	0	2
Alcohol refinery places	7	4	0
Pharmacies and small drug stores	3	0	0
Hotels	0	0	0
Guest houses	2	3	6
Restaurants	0	0	0
Gasoline stations	3	3	0

2.5 Agriculture

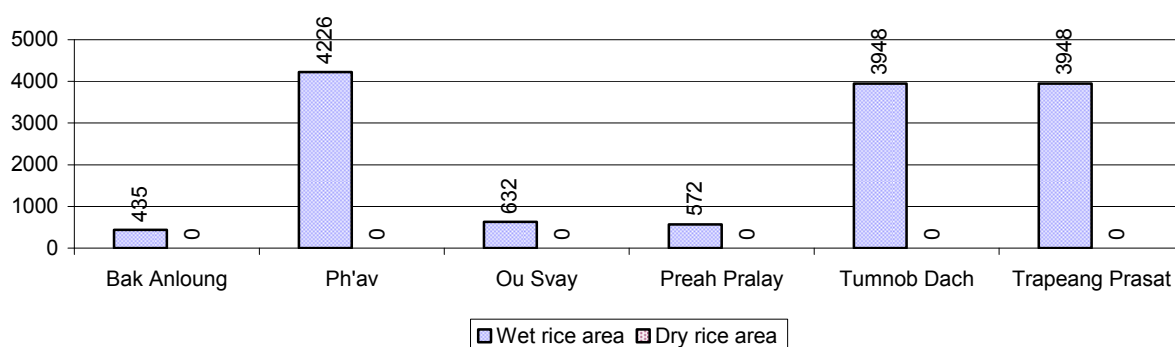
2.5.1 Rice cultivation in the District over 3 years

Description	2006	2007	2008
Total dry rice land area	32 ha	0 ha	0 ha
Actual dry rice cultivation area	5 ha	0 ha	0 ha
% actual cultivation to total land	16%	-%	-%
Total dry rice production	10 tonne(s)	- tonne(s)	- tonne(s)
Average dry rice yield	2.0 tonne(s)/ha	- tonne(s)/ha	- tonne(s)/ha
Total wet rice land area	19,595 ha	24,446 ha	29,804 ha
Actual wet rice cultivation area	8,215 ha	8,935 ha	13,760 ha
% actual cultivation to total land	42 %	37%	46%
Total wet rice production	15,744.46 tonne(s)	15,635.38 tonne(s)	20,640.24 tonne(s)
Average wet rice yield	1.9 tonne(s)/ha	1.8 tonne(s)/ha	1.5 tonne(s)/ha
Total intensive rice land area	0 ha	0 ha	0 ha
Actual intensive rice cultivation area	- ha	- ha	- ha
Average intensive rice yield	- tonne(s)/ha	- tonne(s)/ha	- tonne(s)/ha
Actual upland rice cultivation area	4,430 ha	7,409 ha	17,557 ha
Total upland rice production	8,490 tonne(s)	10,495 tonne(s)	26,336 tonne(s)
Average upland rice yield	1.9 tonne(s)/ha	1.4 tonne(s)/ha	1.5 tonne(s)/ha

2.5.2 Estimated wet and dry Season Rice Yield in tonne(s)/Ha, by Commune, in 2008



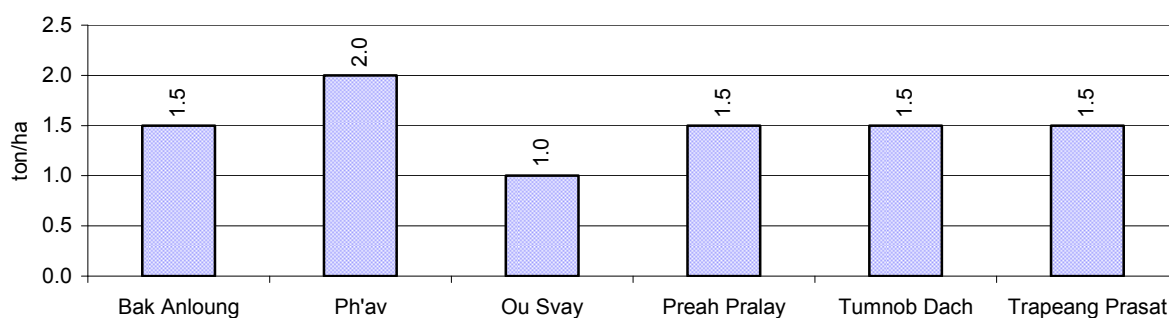
2.5.3 Cultivated wet and dry Season Rice areas in Ha, by Commune, in 2008



2.5.4 Estimated intensive Rice Yields in tonnes/Ha, by Commune, for 2008

There were no estimated intensive rice yields in this District in 2008

2.5.5 Estimated upland Rice Yield in tonnes/Ha, by Commune, for 2008

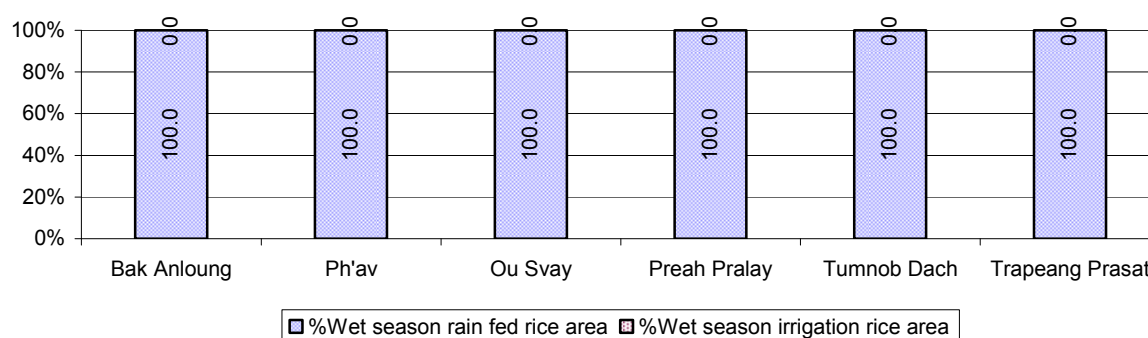


2.5.6 Wet season Rice irrigation across 3 years

Description		2006 %	2007 %	2008	
				%	Number
Total area of wet season rain fed rice land		100%	100%	100 %	13,760 ha
Percentage of wet season rice land that is irrigated; and for 2008 area in Ha		0 %	0 %	0 %	0 ha
Where	Area irrigated from canal/dam	- %	- %	- %	0 ha
	Area irrigated from river, stream, lake, natural pond	- %	- %	- %	0 ha
	Area irrigated from drilled well	- %	- %	- %	0 ha
	Area irrigated from dug pond	- %	- %	- %	0 ha

2.5.7 Water sources for wet Season Rice Cultivation, by Commune, in 2008

This chart shows the percentage of wet season rice cultivation receiving water from rain (natural) and from irrigation.



2.5.8 Access to Irrigation

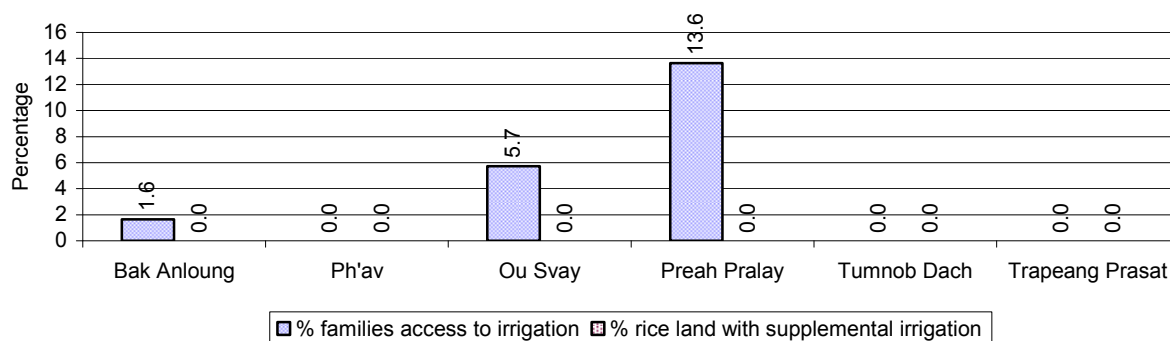
Description	2006 %	2007 %	2008	
			%	Number
Families who have access to irrigation water	1%	2%	2%	177 families
Families who have irrigation wells	2%	1%	0%	9 families

Note: Calculated against the total number of families are rice farmers

2.5.9 Number of Irrigation Wells over 3 years

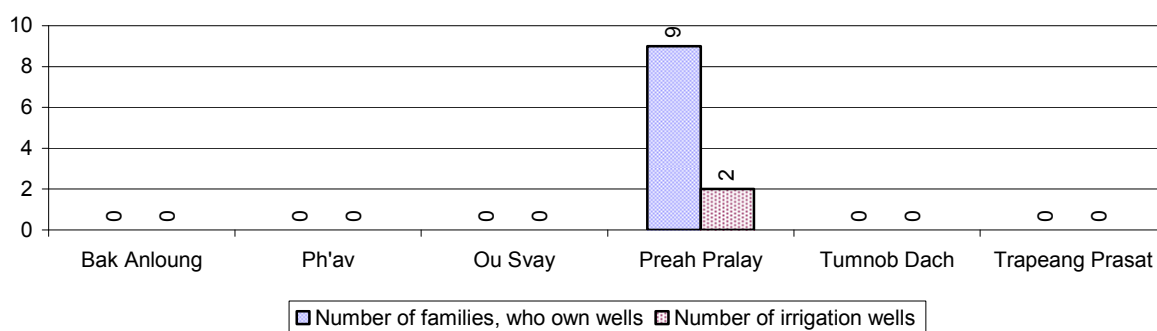
Description	2006	2007	2008
Number of irrigation wells	18 wells	39 wells	2 wells

2.5.10 Percentage of Families with access to (supplemental) Irrigation for wet Season Rice cultivation, by Commune, in 2008



Note: % of families, with access to irrigation is calculated against the total number of families, whose main occupation is rice farming. Irrigated wet rice land area is calculated against the total actual wet rice land cultivated areas

2.5.11 Irrigation Wells, by Commune, in 2008

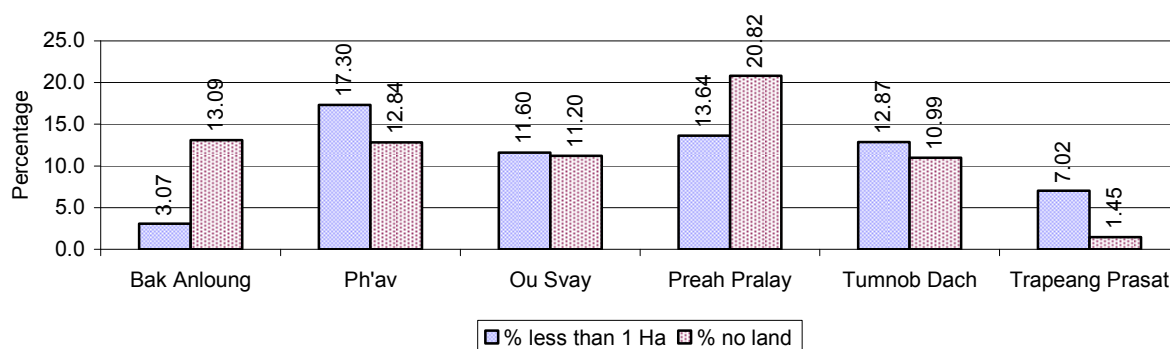


2.5.12 Farmers owning less than one hectare of Rice Land

Description	2006 %	2007 %	2008	
			%	Number
Families who have less than one hectare of rice land	17%	17%	10%	736 families
Families who do not own any rice land	6%	9%	8%	590 families

Note: Calculated on basis of total number of families who are rice farming

2.5.13 Percentage of Farmers with less than one Hectare or no Rice Land, by Commune, in 2008

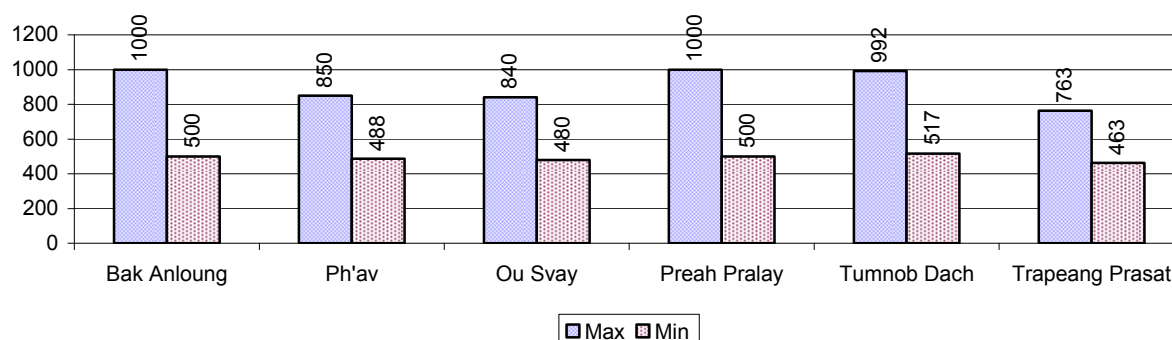


Note: Calculated on basis of total number of families who are rice farming

2.5.14 Average farm-gate Prices of Rice, over 3 years

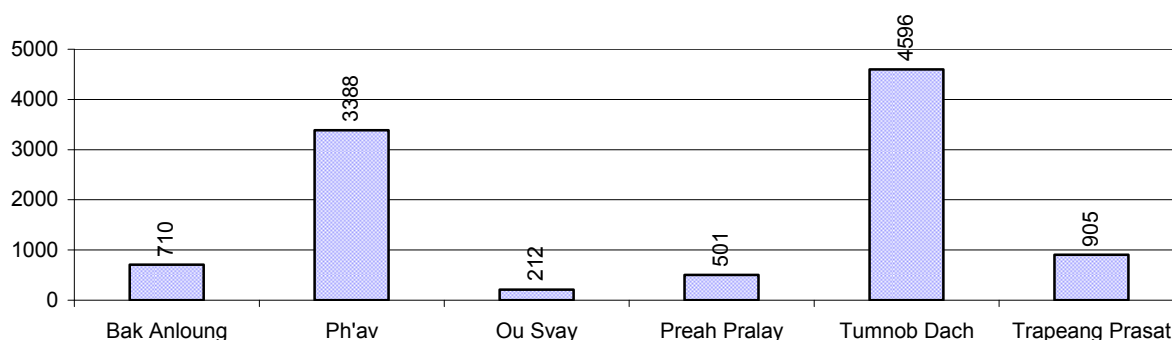
Description	2006	2007	2008
Maximum average farm gate price	540 Riels/Kg	901 Riels/Kg	907 Riels/Kg
Minimum average farm gate price	347 Riels/Kg	609 Riels/Kg	491 Riels/Kg
Average farm gate price	443 Riels/Kg	755 Riels/Kg	699 Riels/Kg
Average rice production per person	971 Kg/person	935 Kg/person	1,303 Kg/person

2.5.15 Minimum and maximum farm-gate Prices of Rice in Riel/kg, by Commune, in 2008



2.5.16 Production of Paddy in Kgs/Person, by Commune, in 2008

This table shows how much paddy (harvested rice) is produced in a year in a commune, in kgs per person.

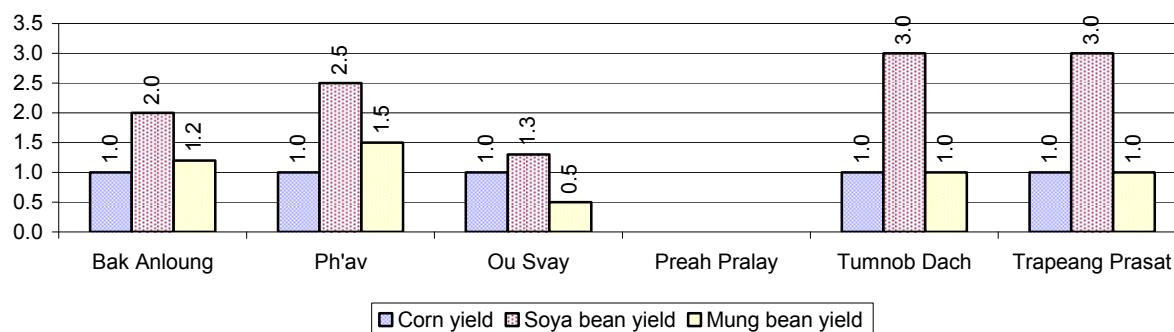


2.5.17 Production of other Crops, over 3 years

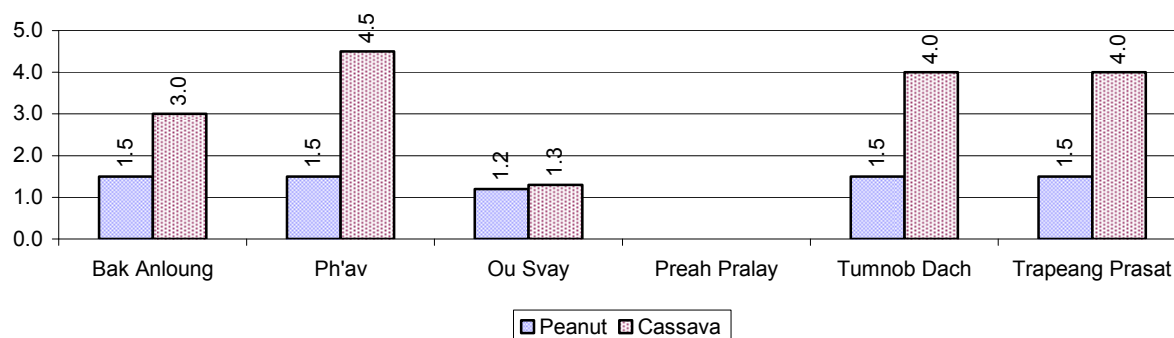
Crops	2006	2007	2008
Corn cultivation area	1 ha	27 ha	47 ha
Estimated corn yield	1.0 tonne(s)/ha	1.5 tonne(s)/ha	1.0 tonne(s)/ha
Estimated corn production	1 tonne(s)	40 tonne(s)	47 tonne(s)
Soya bean cultivation area	174 ha	246 ha	647 ha
Estimated Soya bean yield	1.1 tonne(s)/ha	2.1 tonne(s)/ha	2.4 tonne(s)/ha
Estimated Soya bean production	189 tonne(s)	513 tonne(s)	1,526 tonne(s)
Mungbean cultivation area	27 ha	49 ha	73 ha
Estimated Mungbean yield	1.0 tonne(s)/ha	1.5 tonne(s)/ha	1.0 tonne(s)/ha
Estimated Mungbean production	27 tonne(s)	72 tonne(s)	76 tonne(s)
Peanut cultivation area	57 ha	94 ha	265 ha
Estimated Peanut yield	1.3 tonne(s)/ha	1.2 tonne(s)/ha	1.4 tonne(s)/ha
Estimated Peanut production	71 tonne(s)	109 tonne(s)	382 tonne(s)

Crops	2006	2007	2008
Cassava cultivation area	250 ha	266 ha	146 ha
Estimated Cassava yield	15.0 tonne(s)/ha	8.0 tonne(s)/ha	3.4 tonne(s)/ha
Estimated Cassava production	3,750 tonne(s)	2,128 tonne(s)	491 tonne(s)
Sweet potatoes cultivation area	0 ha	2 ha	6 ha
Estimated Sweet potatoes yield	- tonne(s)/ha	2.0 tonne(s)/ha	1.8 tonne(s)/ha
Estimated Sweet potatoes production	- tonne(s)	4 tonne(s)	11 tonne(s)
Sesame cultivation area	171 ha	186 ha	403 ha
Estimated Sesame yield	0.9 tonne(s)/ha	1.2 tonne(s)/ha	1.0 tonne(s)/ha
Estimated Sesame production	154 tonne(s)	227 tonne(s)	387 tonne(s)

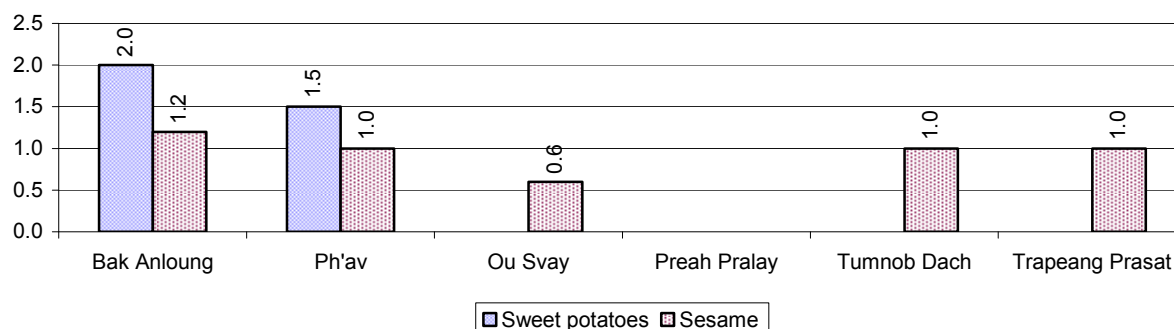
2.5.18 Yields of Corn, Soya beans and Mungbeans in tonne(s)/ha, by Commune, in 2008



2.5.19 Yields of Peanuts and Cassava in tonne(s)/ha by Commune, in 2008



2.5.20 Yields of Sweet Potatoes and Sesame in tonne(s)/ha, by Commune, in 2008



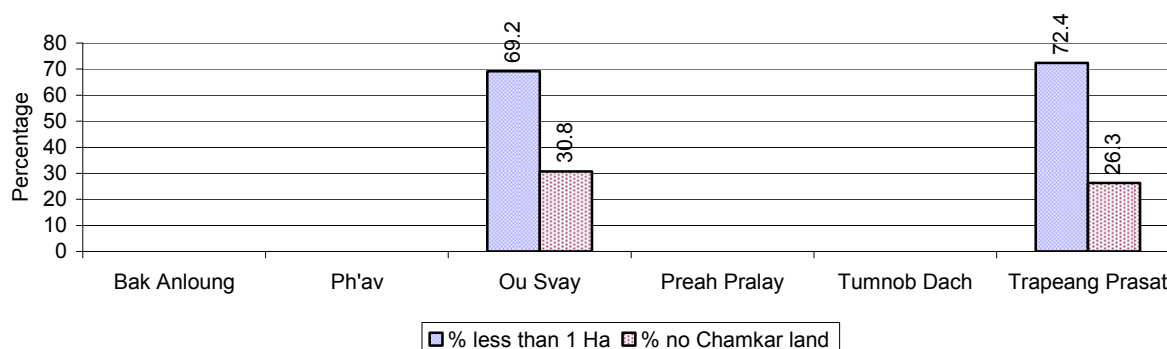
2.5.21 Percentage Farmers who own less than 1 Ha or no Chamkar land

Description	2006	2007	2008	
	%	%	%	Number
Families, who own less than 1ha of Chamkar land	9%	0%	72%	73 families
Families, with no Chamkar land	5%	0%	27%	28 families

Note 1: Calculated as a percentage of the total number of families whose main occupation is Chamkar (not rice) farming

Note 2: Chamkar land is no-rice land, i.e. other crops

2.5.22 Percentage Farmers owning less than 1 ha or no Chamkar land, by Commune, in 2008



Note: Percentage is calculated among families, who Chamkar farm as a main occupation, not the total population of the commune.

2.5.23 Percentage of Families raising Cattle/Buffalo, over 3 years

Description	2006	2007	2008	
	%	%	%	Number
Families raising cattle/buffalo	30%	32%	28%	2,190 families
Families raising cattle/buffalo as labor forces	5%	7%	6%	451 families

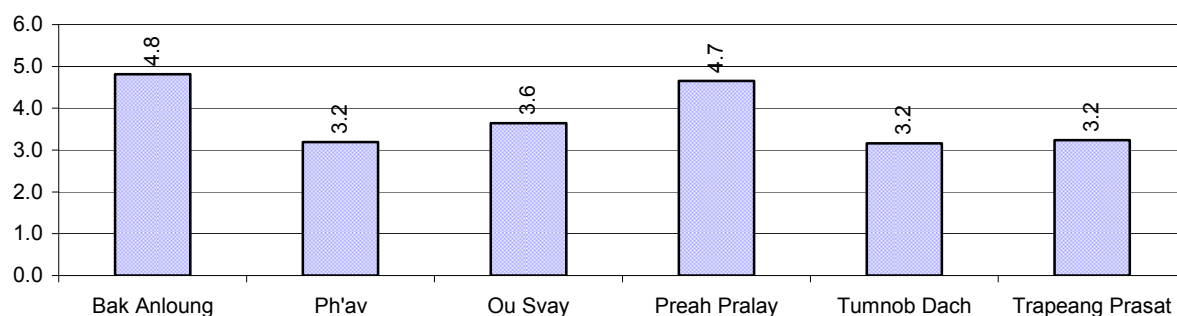
Note: Calculated against the total number of families.

2.5.24 Number of Cattle/buffalo being raised, over 3 years

Description	2006	2007	2008
Total number of cattle/buffalo	5,215 head(s)	6,076 head(s)	7,450 head(s)
Average cattle/buffalo per families	3.3 head(s)/families	3.2 head(s)/families	3 head(s)/families

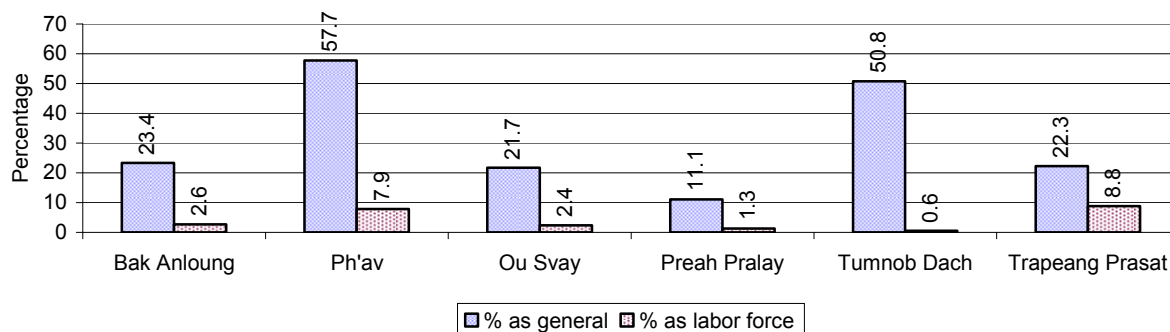
Note: Calculated by dividing total number of cattle/buffalo by total number of cattle/buffalo raising families

2.5.25 Average number of Cattle/Buffalo per Family, by Commune, in 2008



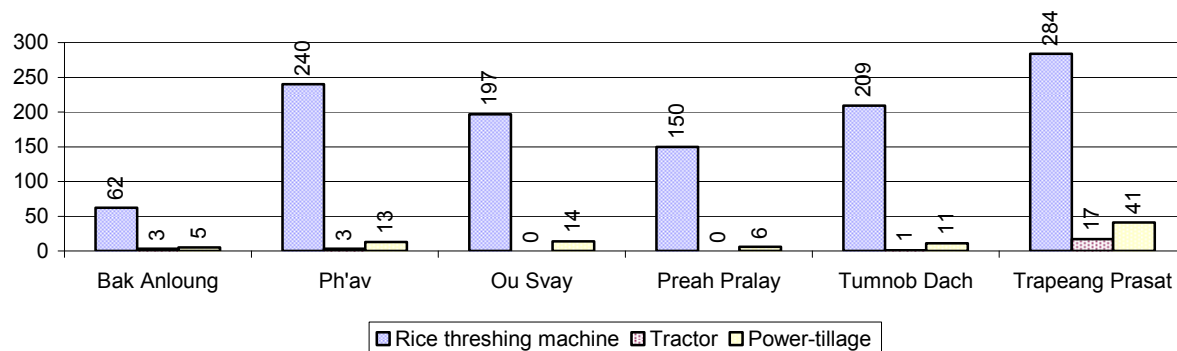
Note: Calculated by dividing total number of cattle/buffalo by total number of cattle/buffalo raising families

2.5.26 Percentage Families raising Cattle/Buffalo, for general and labor purposes in 2008, by Commune



Note: Calculated using the total number of families raising cattle/buffalo against the total number of families.

2.5.27 Type and number of agricultural Machines, by Commune, in 2008

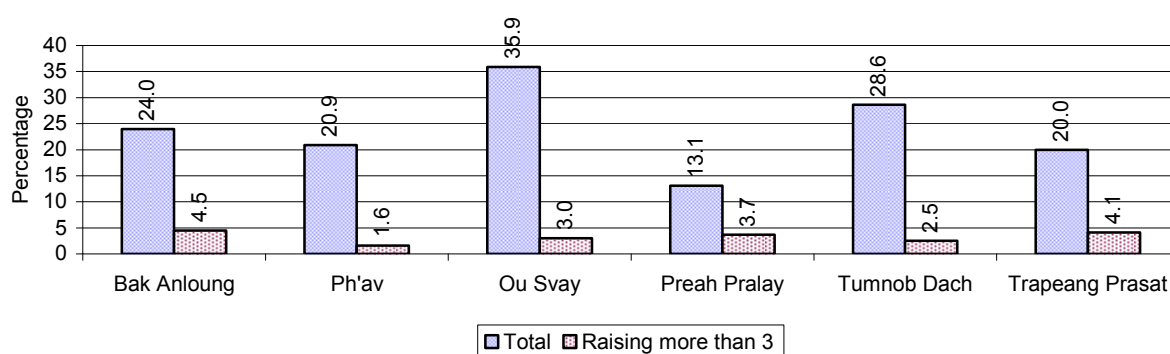


2.5.28 Livestock-producing Households over 3 years

Description	2006 %	2007 %	2008	
			%	Number
Total number of families raising pigs	34%	32%	23%	1,806 families
number of families raising more than 3 pigs	5%	6%	3%	271 families
Total number of families raising chickens	82%	80%	81%	6,343 families
number of families raising more than 3 chickens	50%	54%	47%	3,681 families
Total number of families raising ducks	6%	4%	5%	368 families
number of families raising more than 5 ducks	2%	2%	3%	230 families
Total number of families raising goats or sheep	0%	0%	0%	3 families
Total number of families raising horses	0%	0%	0%	2 families

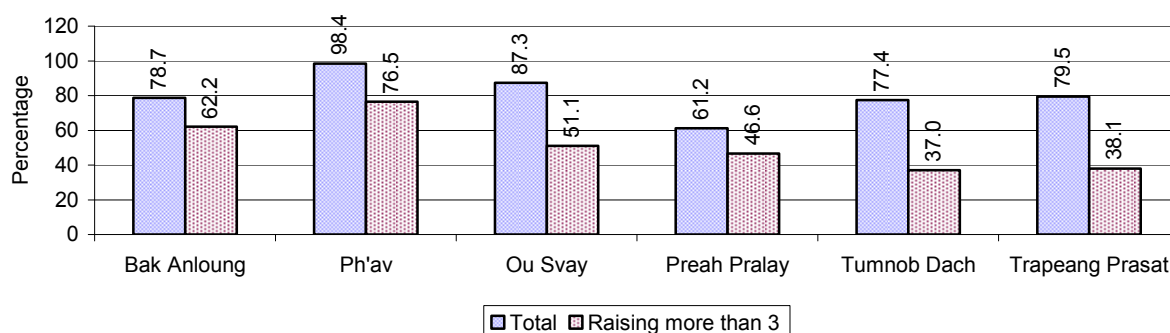
Note: Calculated against the total number of families

2.5.29 Percentage Families raising Pigs, by Commune, in 2008



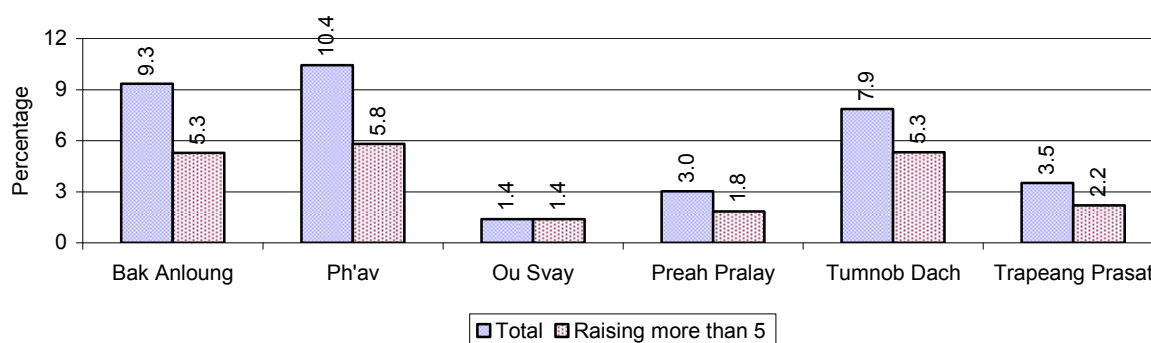
Note: Calculated against the total number of families in the commune

2.5.30 Percentage Families raising Chickens, by Commune, in 2008



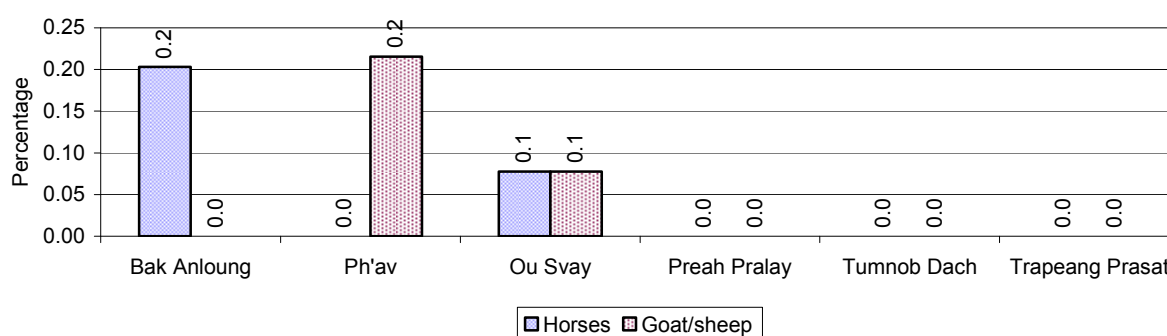
Note: Calculated against the total number of families in the commune

2.5.31 Percentage Families raising Ducks, by Commune, in 2008



Note: Calculated against the total number of families in the commune

2.5.32 Percentage Families raising Horses, Goats or Sheep, by Commune, in 2008

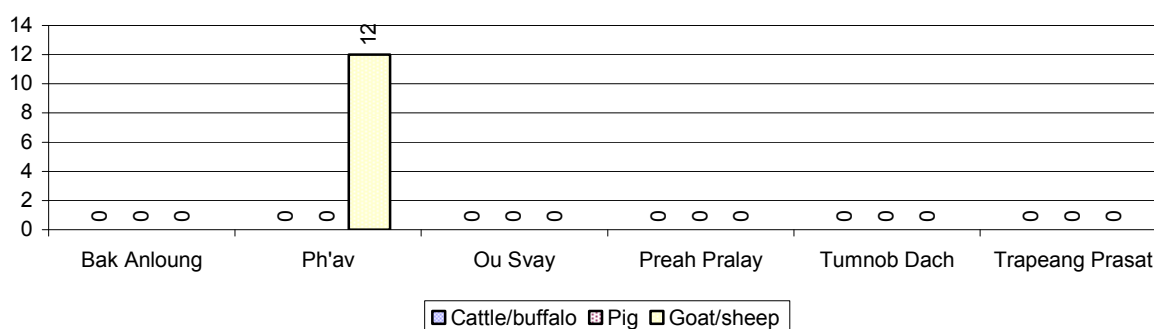


Note: Calculated against the total number of families in the commune

2.5.33 Livestock Farms over 3 years

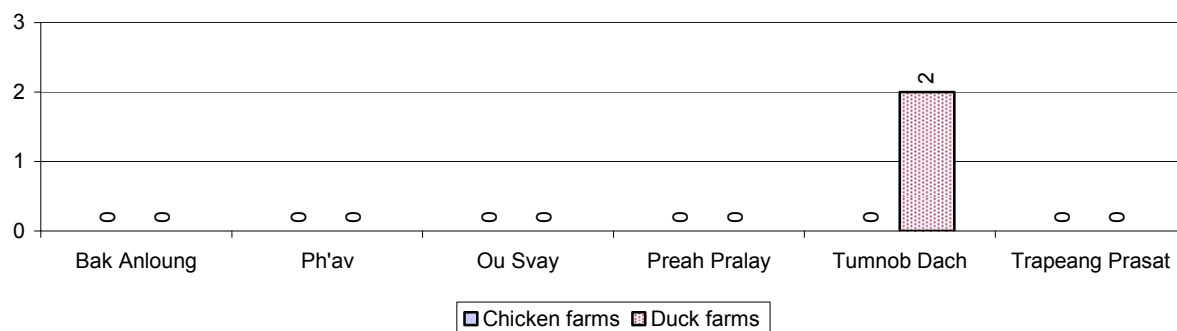
Description	2006	2007	2008
Number of cattle/buffalo farms	0 farm(s)	0 farm(s)	0 farm(s)
Number of pig farms	0 farm(s)	0 farm(s)	0 farm(s)
Number of goat/sheep farms	2 farm(s)	2 farm(s)	12 farm(s)
Number of chicken farms	0 farm(s)	0 farm(s)	0 farm(s)
Number of duck farms	0 farm(s)	2 farm(s)	2 farm(s)

2.5.34 Number Livestock Farms, by Commune in 2008



Note: Number of farms are recorded by the village chief, not by counting number of livestock in each farm

2.5.35 Number Chicken and Duck Farms, by Commune, for 2008



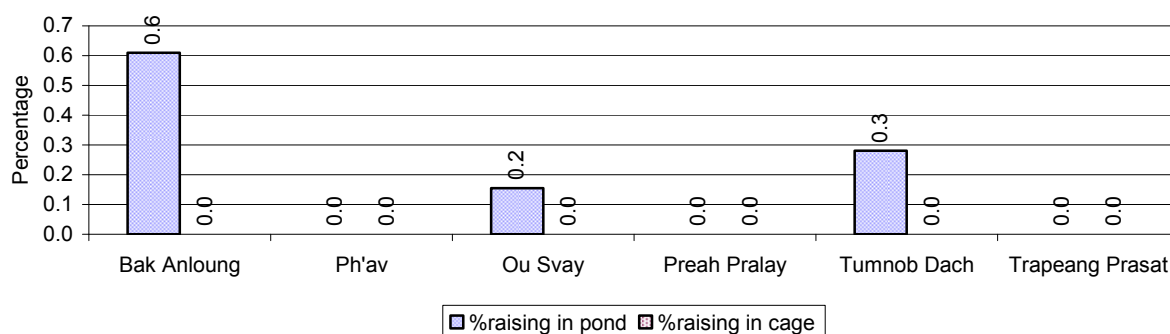
Note: Number of farm places recorded by village chief, not by counting number of livestock in each farm

2.5.36 Families raising Fish over 3 years

Description	2006	2007	2008
Total number of families raising fish	47 families	20 families	7 families
% families raising fish	1%	0%	0%
Number families raising fish in pond	46 families	20 families	7 families
% families raising fish in pond	1%	0 %	0%
Number fish pond	46 pond(s)	20 pond(s)	10 pond(s)
No. of ponds per family	1.0 pond/families	1.0 pond/families	1.4 pond/families
Number of families raising fish in cage	1 families	0 families	0 families
%families raising fish in cage	0 %	0 %	0%
Number of fish cage	1 cage(s)	0 cage(s)	0 cage(s)
No. of fish cage per family	1.0 cage /families	- cage /families	- cage /families

Note: % of families raising fish or fish in ponds or cages is calculated a percentage of the total number of families.

2.5.37 Percentage of Families raising Fish, by Commune, in 2008



Note: Calculated as a percentage of the total number of families in the commune.

2.5.38 Shrimp and Prawn Farming over 3 years

Description	2006	2007	2008
Number of families raising shrimps	0 families	0 families	0 families
% Families raising shrimps	0%	0%	0%
Number of shrimp ponds	0 pond	0 pond	0 pond
Total area raising shrimps	0 ha	0 ha	0 ha
Area per family	-ha/families	-ha/families	-ha/families
Number of families raising prawns	0 families	0 families	0 families
% families raising prawns	0%	0%	0%
Number prawn ponds	0 pond	0 pond	0 pond
Ponds per families	- pond/families	-pond/families	-pond/families
Number of prawn cages	0 cage	0 cage	0 cage
Cages per families	0 cage /families	0 cage /families	0 cage /families

Note: Percentage of families raising either prawns or shrimp is calculated against the number of families, who do aquaculture farming, NOT the total population.

2.5.39 Numbers of Families raising Shrimps and number of Shrimp Ponds, by Commune, in 2008

There were none of these in this District in 2008

2.5.40 Number of Families raising Prawn and Number of Prawn Ponds/Cages, by Commune, in 2008

There were none of these in this District in 2008

3 Social Aspects

3.1 Education

3.1.1 Kindergarten in the District over 3 years

Description	2006	2007	2008
Number of community kindergarten schools	21 school(s)	36 school(s)	31 school(s)
Number of community kindergarten class rooms	17 room(s)	26 room(s)	25 room(s)
Number of community kindergarten classes	24 class(es)	29 class(es)	31 class(es)
Number of community kindergarten teachers	38 person(s)	36 person(s)	31 person(s)
Number of women community kindergarten teachers	38 women	36 women	31 women
Number of state and private kindergarten schools	2 school(s)	2 school(s)	2 school(s)
Number of state and private kindergarten class rooms	2 room(s)	3 room(s)	4 room(s)
Number of state and private kindergarten classes	3 class(es)	3 class(es)	4 class(es)
Number of state and private kindergarten teachers	2 person(s)	3 person(s)	4 person(s)
Number of women state and private kindergarten teachers	2 women	3 women	4 women

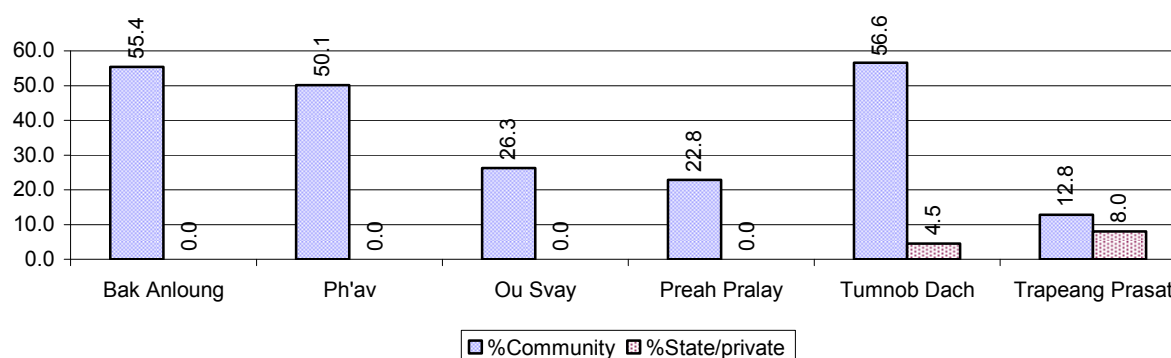
3.1.2 Percentage enrolment at Kindergarten level over 3 years

This table shows the percentage of the total 3-5 year old population attending kindergarten.

Description	2006 %	2007 %	2008	
			%	Number
Total percentage of children, 3-5 yrs, go to kindergarten	44%	36%	30%	966 person(s)
Percentage of children, 3-5 yrs, go community kindergarten	41%	32%	27%	846 person(s)
Percentage children, 3-5 yrs, go state/private kindergarten	3%	4%	4%	120 person(s)

Note: Calculated against the total for that age group

3.1.3 Percentage of Children 3-5 yrs attending Kindergarten, by Commune, in 2008



3.1.4 Basic Education over 3 years

Primary School

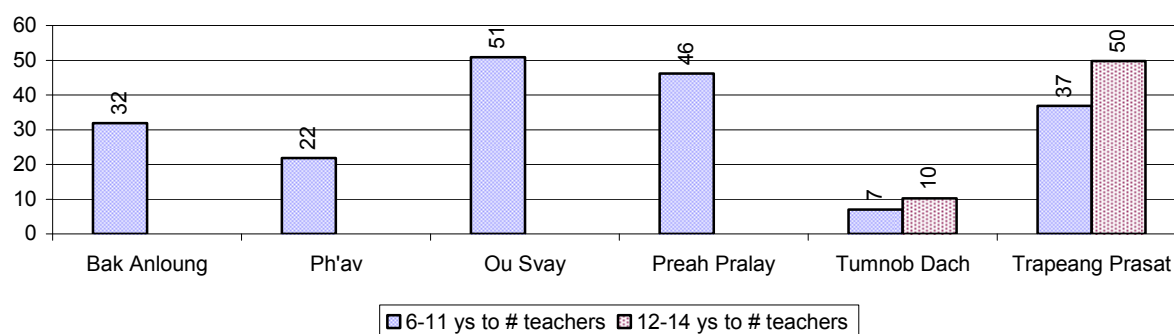
Description	2006	2007	2008
Number of primary schools	35 school(s)	38 school(s)	50 school(s)
Number of primary school rooms	93 room(s)	118 room(s)	149 room(s)
Number of primary classes	154 class(es)	172 class(es)	206 class(es)
Number of primary teachers	143 person(s)	146 person(s)	200 person(s)
Ratio of children 6-11 yrs to school	118	117	106
Ratio of children 6-11 yrs to school room	44	38	35
Ratio of children 6-11 yrs to class	27	26	26
Ratio of children 6-11 yrs to teacher	29	30	26

Note: According to education norm, children 6-11 yrs should attend primary school, while 12-14 yrs should be in lower secondary school, but in reality this varies.

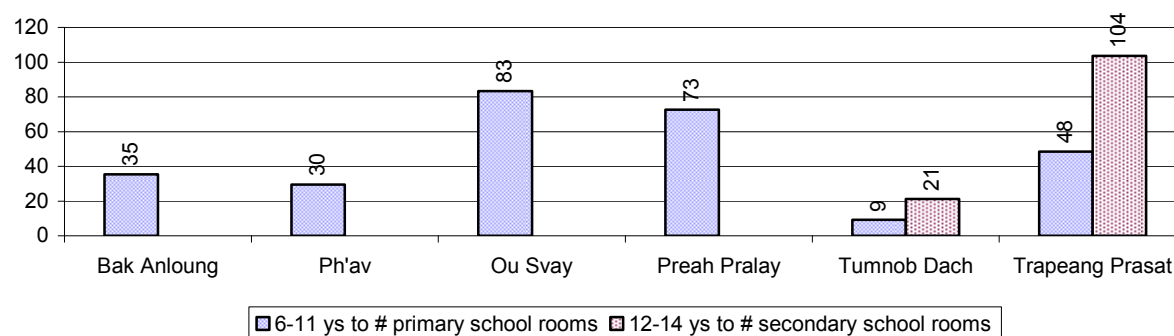
Lower Secondary School

Description	2006	2007	2008
Number of lower secondary schools	3 school(s)	4 school(s)	4 school(s)
Number of lower secondary school rooms	14 room(s)	22 room(s)	24 room(s)
Number of lower secondary classes	15 class(es)	22 class(es)	24 class(es)
Number of lower secondary teachers	22 person(s)	26 person(s)	50 person(s)
Ratio children 12-14 yrs to school	776	640	695
Ratio of children 12-14 yrs to school room	166	116	116
Ratio of children 12-14 yrs to class	155	116	116
Ratio of children 12-14 yrs to teacher	106	99	56

3.1.5 Ratio of 6-11 year old and 12-14 year old Children to number of Teachers, by Commune, in 2008



3.1.6 Ratio of 6-11 year old and 12-14 year old Children to number of School Rooms, by Commune, in 2008



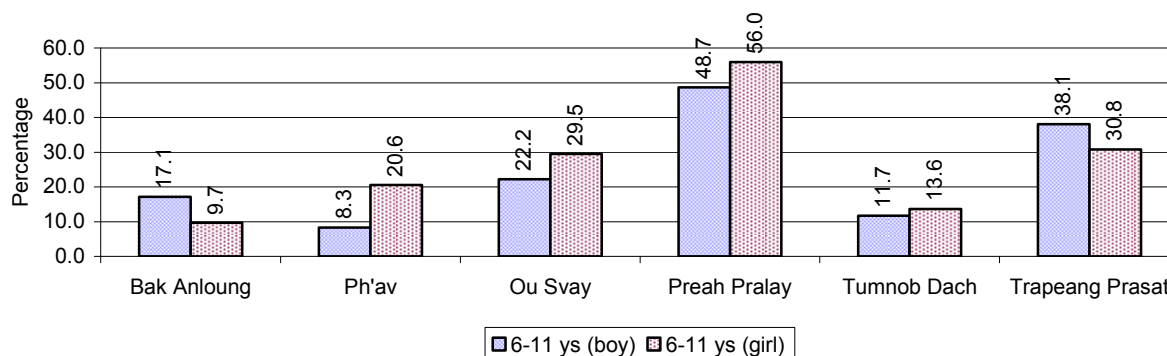
3.1.7 Enrolment status at Primary Level over 3 years

Description	2006 %	2007 %	2008	
			%	Number
Total children aged 6-11 years old	17%	16%	15%	5,277 person(s)
Total children aged 6-11 who are in school	85%	88%	71%	3,735 person(s)
Total children aged 6-11 who are not in school	15%	12%	29%	1,542 person(s)
Total girls aged 6-11 years old	17%	15%	14%	2,585 person(s)
Total girls aged 6-11 who are in school	83%	88%	71%	1,836 person(s)
Total girls aged 6-11 who are not in school	17%	12%	29%	749 person(s)
Total boys aged 6-11 years old	17%	16%	15%	2,692 person(s)
Total boys aged 6-11 who are in school	87%	87%	71%	1,899 person(s)
Total boys aged 6-11 who are not in school	13%	13%	29%	793 person(s)

Note 1: Percentage is calculated on the basis of the total number of children within 6-11 year age group for the first 3 rows and for the total girls and the total boys aged 6-11 yrs.

Note 2: Number of girls aged 6-11 who are in & not in school is calculated against the total number of girls aged 6-11 yrs. Number boys, 6-11 yrs who are in & not in school are calculated against the total number of boys aged 6-11 yrs.

3.1.8 Percentage of 6-11 year old Children not in School, by Commune, in 2008



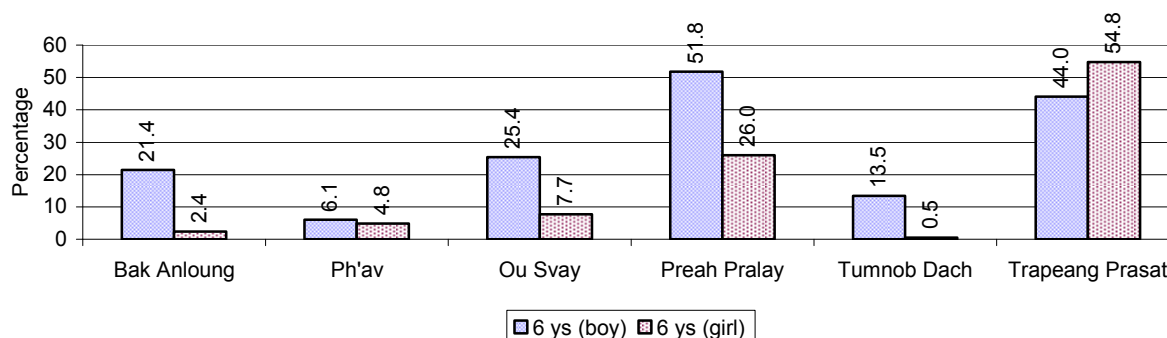
Note: calculated on the basis of the total number of children within 6-11 year age group in the commune.

3.1.9 Enrolment of 6 year old Children over 3 years

Description	2006 %	2007 %	2008	
			%	Number
Total % and number of children aged 6 years old	4%	4%	3%	1,208 person(s)
Total % of children aged 6 years old in school	78%	84%	67%	807 person(s)
Total % of children aged 6 years old not in school	22%	16%	33%	401 person(s)

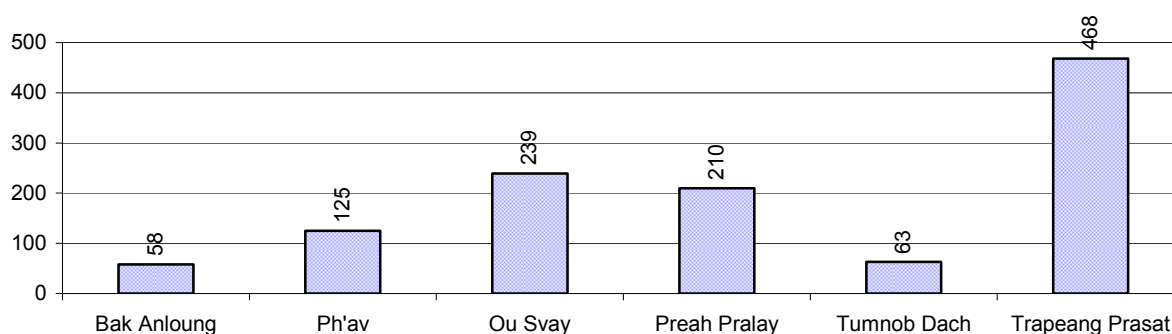
Note: First row calculated as a percentage of total population. Second and third row calculated as a percentage of the total number of 6 year olds.

3.1.10 Percentage of 6 year old Children not in School, by Commune, in 2008



Note: Calculated as a percentage of total 6 year old population

3.1.11 Number of 5 year old Children in each Commune in 2008

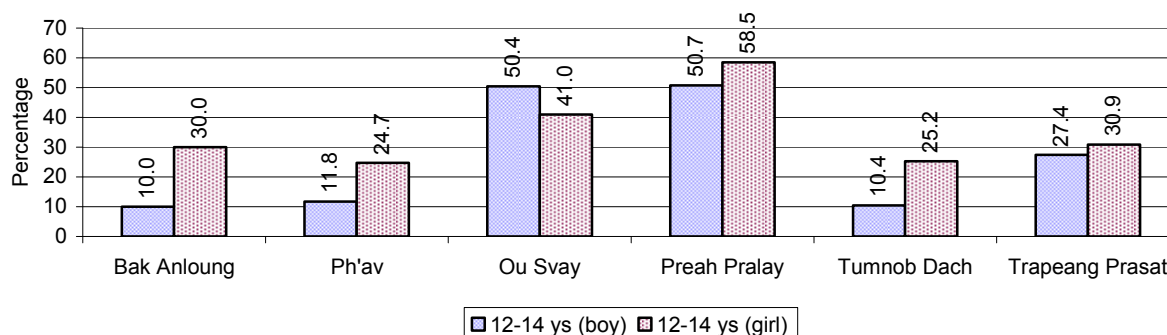


3.1.12 Enrolment at Lower Secondary Level over 3 years

Description	2006 %	2007 %	2008	
			%	Number
Total children aged 12-14 years old	9%	9%	8%	2,780 person(s)
Children aged 12-14 years old in school	81%	82%	68%	1,901 person(s)
Children aged 12-14 years old not in school	19%	18%	32%	879 person(s)
Total girls aged 12-14 years old	9%	9%	8%	1,370 person(s)
Girls aged 12-14 years old in school	79%	81%	66%	899 person(s)
Girls aged 12-14 years old not in school	21%	19%	34%	471 person(s)
Total boys aged 12-14 years old	10%	9%	8%	1,410 person(s)
Boys aged 12-14 years old in school	83%	83%	71%	1,002 person(s)
Boys aged 12-14 years old not in school	17%	17%	29%	408 person(s)

Note: Percentage is calculated on the basis of number of the total number of children within 12-14 yrs group, except for the first row of each section which is calculated on the basis of the total population.

3.1.13 Percentage of 12-14 year olds not in School, by Commune, in 2008



Note: Calculated as a percentage of the total 12-14 year old population in each commune

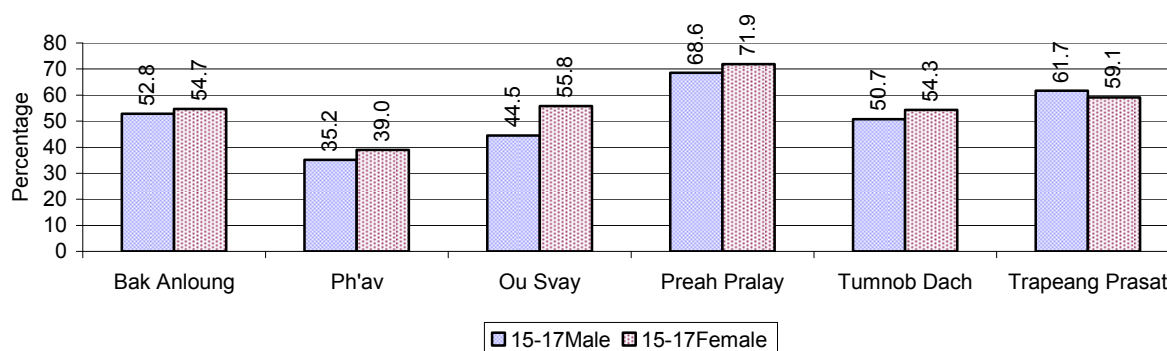
3.1.14 Upper Secondary Schools over 3 years

Description	2006	2007	2008
Number of upper secondary schools	0 school(s)	1 school(s)	2 school(s)
Number of upper secondary school rooms	0 room(s)	2 room(s)	4 room(s)
Number of upper secondary classes	0 class(es)	2 class(es)	4 class(es)
Number of upper secondary teachers	0 person(s)	0 person(s)	4 person(s)
Ratio of 15-17 yr olds to number of school	N/A	2,172	1,407
Ratio of 15-17 yr olds to number of school room	N/A	1,086	704
Ratio of 15-17 yr olds to number of classes	N/A	1,086	704
Ratio of 15-17 yr olds to number of teacher	N/A	N/A	704

3.1.15 Enrolment of 15-17 year old teenagers over 3 years

Description	2006	2007	2008
Number of teenage, 15-17 years old	2,006 person(s)	2,172 person(s)	2,814 person(s)
Number of teenage, 15-17 years old, who are not studying	851 person(s)	816 person(s)	1,568 person(s)
Percentage of teenage, 15-17 years old not studying	42%	38%	56%

3.1.16 Percentage of 15-17 year old Teenagers not at School, by Commune, in 2008



3.1.17 Literacy Classes as of 2008

Literacy classes	Organized by:		Other Program(s)	Total
	PDoEYS	NGOs		
Number of On-going literacy classes	0 class(es)	0 class(es)	0 class(es)	0 class(e(s)
Number of literacy students in on-going classes	0 person(s)	0 person(s)	0 person(s)	0 person(s)
Completed literacy class(es)	0 classes	0 classes	0 classes	0 classes
Number of literacy students that have completed literacy classes	0 person(s)	0 person(s)	0 person(s)	0 person(s)
Number of students that passed	0 person(s)	0 person(s)	0 person(s)	0 person(s)

3.1.18 Number of on-going and completed Literacy Classes, by Commune, in 2008

There were no classes in this District in 2008

3.1.19 Students of on-going & completed Literacy Classes, by Commune, in 2008

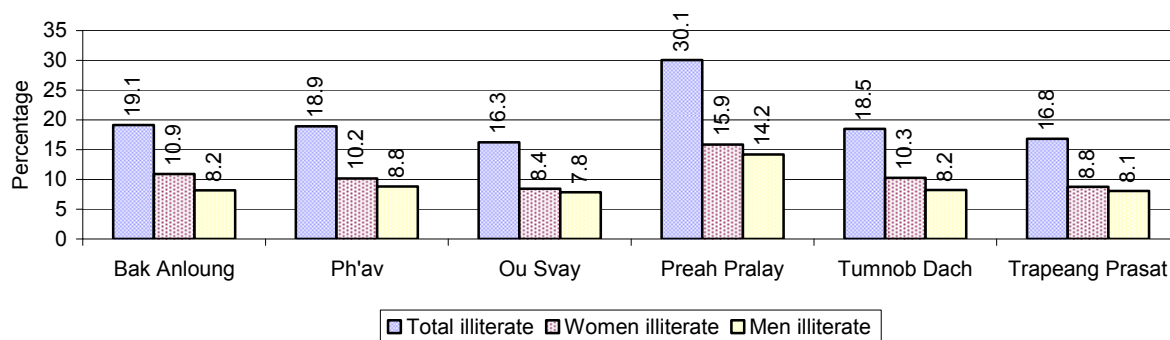
There were no students who had taken or were taking literacy classes in this District in 2008

3.1.20 Percentage of illiterate People between 15-60, over 3 years

Illiteracy Status	2006	2007	2008	
	%	%	%	Number
Illiterate people, 15-60 years old	24%	19%	18%	3,913 person(s)
Illiterate females, 15-60 years old	13%	10%	10%	2,070 person(s)
Illiterate people, 15-17 years old	16%	8%	10%	279 person(s)
Illiterate females, 15-17 years old	9%	3%	5%	127 person(s)
Illiterate people, 18-24 years old	20%	13%	11%	588 person(s)
Illiterate females, 18-24 years old	11%	6%	6%	300 person(s)
Illiterate people, 25-60 years old	26%	23%	23%	3,046 person(s)
Illiterate females, 25-60 years old	14%	13%	12%	1,643 person(s)

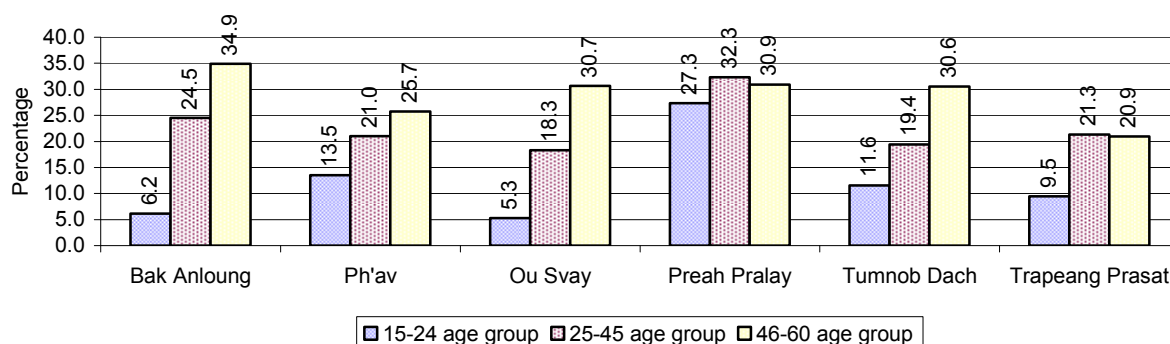
Note: Percentage is calculated on the basis of number of people in age group.

3.1.21 Percentage illiterate People among 15-60 yrs old, by Commune, in 2008



Note: Percentages are calculated on the basis of number of people in that age group.

3.1.22 Percentage illiterate People for 15-24 yrs, 25-45 yrs and 46-60 yrs, by Commune, in 2008



Note: Percentage of illiterate people in each age group is calculated on the basis of number of people in that age group.

3.2 Health

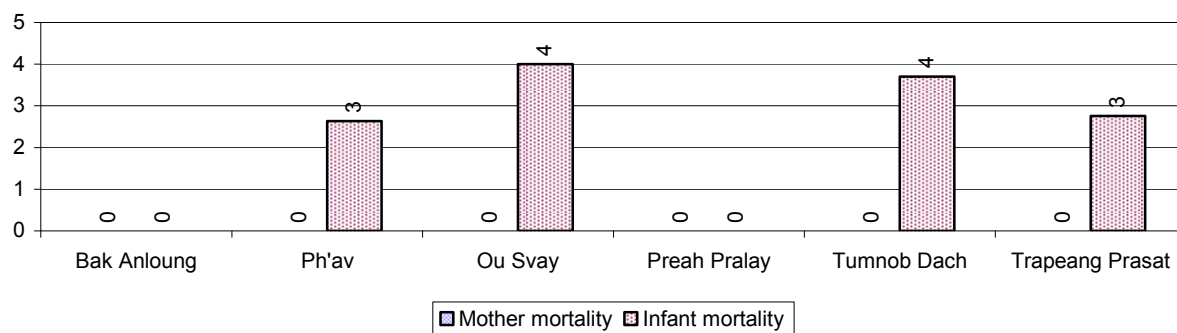
3.2.1 Health Situation of Women and Children, over 3 years

Description	2006	2007	2008
Number families with a birth during the year	481 families	592 families	689 families
Number of women who had their baby delivered by a TBA	363 person(s)	389 person(s)	381 person(s)
Percentage of women who had their baby delivered by a TBA	75 %	66 %	55 %
Number of women who had their baby delivered by a midwife	118 person(s)	203 person(s)	308 person(s)
Percentage of women had their baby delivered by a midwife	25 %	34 %	45 %
Number of mothers who died within 1 month of giving birth	2 person(s)	2 person(s)	0 person(s)
Mothers who died within 1 month of giving birth per 100,000 families having a delivery	416	338	0
Number of infants born during the year	482 person(s)	600 person(s)	690 person(s)
Number of Infants who died within 1 month	19 person(s)	22 person(s)	10 person(s)
Infants mortality within 1 month per 1,000 births	39	37	14

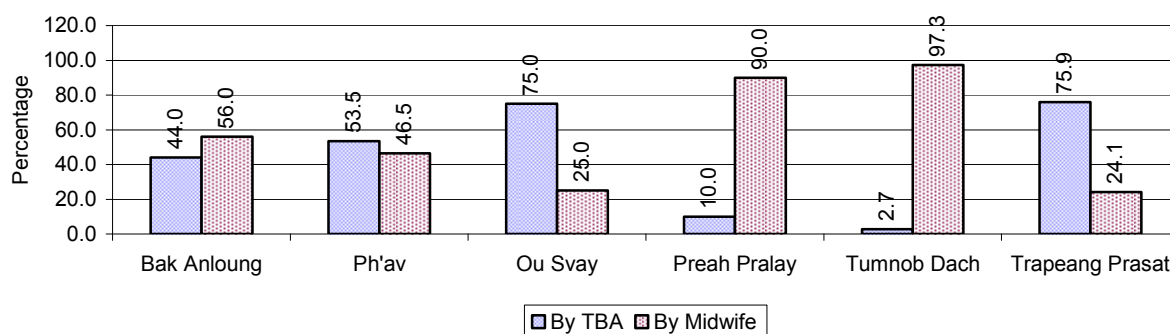
Description	2006	2007	2008
Number of children who died below the age of 5.	18 person(s)	14 person(s)	10 person(s)
Number of infants, aged 9-12 months, born during the year	273 person(s)	506 person(s)	392 person(s)
Nr. infants, aged 9-12 months, not receiving full immunization	39 person(s)	75 person(s)	75 person(s)
% of 9-12 months infants, not receiving full immunization	14 %	15 %	19 %

Note: TBA = Traditional Birth Attendant

3.2.2 Mothers dying within 0 days to 1 month of giving Birth and Infants dying within 1 month in 2008, by Commune

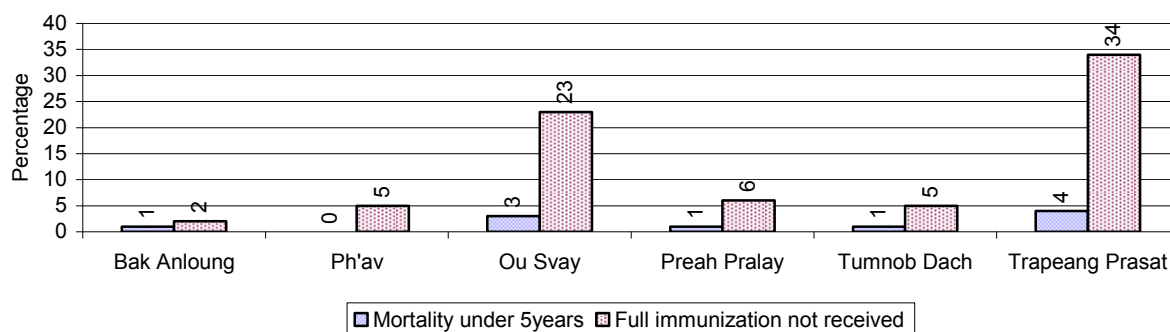


3.2.3 Percentage of Women delivering with a TBA or Midwife, by Commune



Note: Calculated as a percentage of total deliveries

3.2.4 Percentage of Children dying below 5 & of 9-12 months not receiving full Immunization, by Commune, in 2008



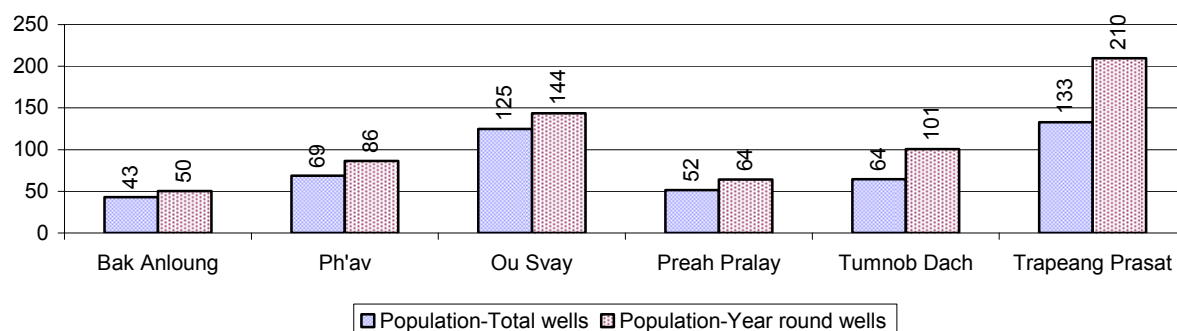
Note: Mortality rate calculated as a percentage of the total 5 year old population. Lack of immunization received calculated as a percentage of the total number 9-12 months olds there are

3.3 Water and Sanitation

3.3.1 Number of different types of Wells over 3 years

Type of wells	Number of wells by year		
	2006	2007	2008
<i>Total number of pumped or mixed wells</i>	263	275	292
Year-round usable pumped or mixed wells	210	219	229
Dry season unusable pump or mixed wells	53	56	63
Pump or mixed wells needing repair/rehabilitation	69	76	73
<i>Total number of ring wells</i>	61	88	111
Year-round usable ring wells	31	61	71
Dry season unusable ring wells	30	27	40
Ring wells needing repair/rehabilitation	21	29	35
<i>Total number of unprotected dug wells</i>	138	145	168
Year-round usable unprotected dug wells	83	103	124
Dry season unusable unprotected dug wells	55	42	44

3.3.2 Ratio of People to Wells, by Commune, in 2008

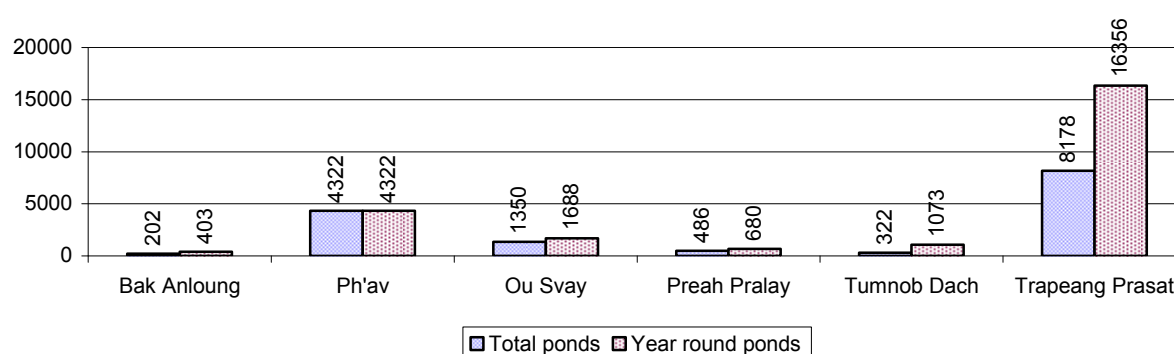


Note: Year-round wells excluding unprotected wells

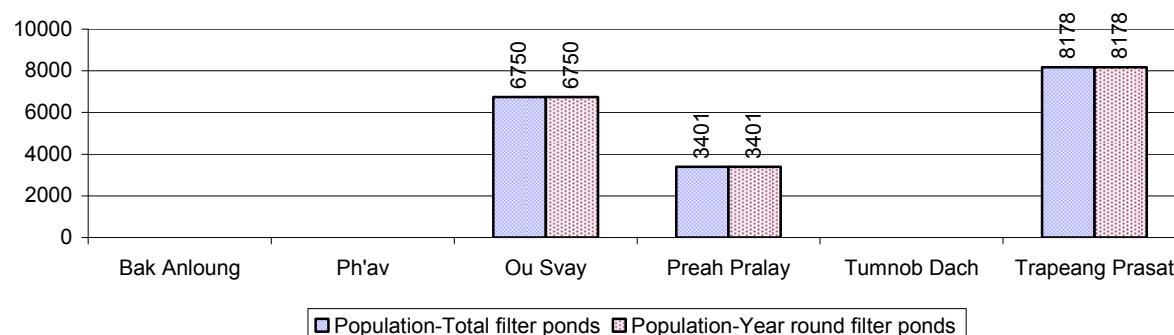
3.3.3 Potable Ponds over 3 years

Type of Pond	2006	2007	2008
<i>Total number of normal-type ponds</i>	27 pond	31 pond	35 pond
Year-round usable normal-type ponds	15 pond	28 pond	19 pond
Dry season unusable normal-type ponds	12 pond	3 pond	16 pond
Normal-type ponds needing repair/rehabilitation	8 pond	9 pond	9 pond
<i>Total number of filter ponds</i>	5 pond	6 pond	4 pond
Year-round usable filter ponds	4 pond	6 pond	4 pond
Filter ponds, dry season unusable	1 pond	0 pond	0 pond
Filter ponds needing repair/rehabilitate	3 pond	2 pond	0 pond

3.3.4 Ratio of People to normal Ponds, by Commune in 2008



3.3.5 Ratio of People to Filter Ponds, by Commune, in 2008

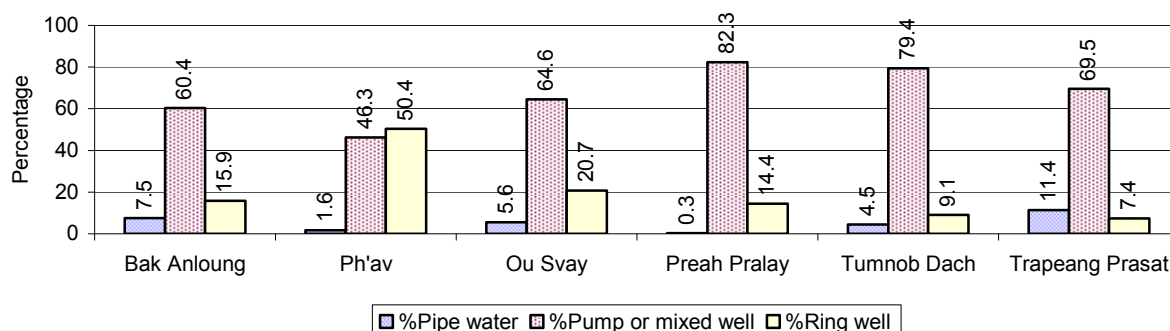


3.3.6 Source of potable Water for Households, over 3 years

Water sources	2006 %	2007 %	2008	
			%	Number
Families using water from purification system	0%	5 %	7 %	572 families
Families using water from pump, mixed wells	62%	66 %	68 %	5,285 families
Families using water from ring wells and open dug wells	19%	12 %	16 %	1,257 families
Families using water from pond	6%	6 %	3 %	268 families
Families using water from rain water storage	0%	0 %	0 %	5 families
Families using water from rivers, lakes, natural ponds and reservoirs	13%	10 %	6 %	441 families

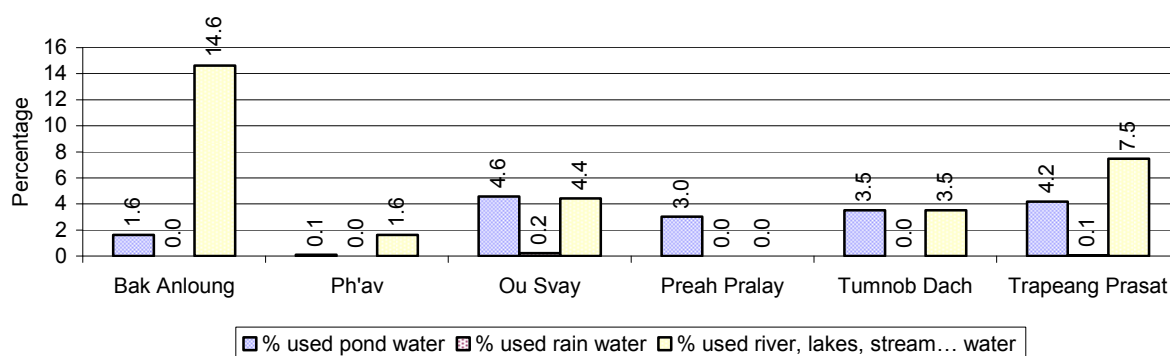
Note: Calculated as a percentage of the total number of families.

3.3.7 Percentage Families using different Water Sources, by Commune, in 2008



Note: Calculated as a percentage of the total number of families in each commune

3.3.8 Percentage Families using Water from Rain Water Storage, Ponds and natural Sources (rivers/lakes/natural ponds/reservoirs), by Commune, 2008



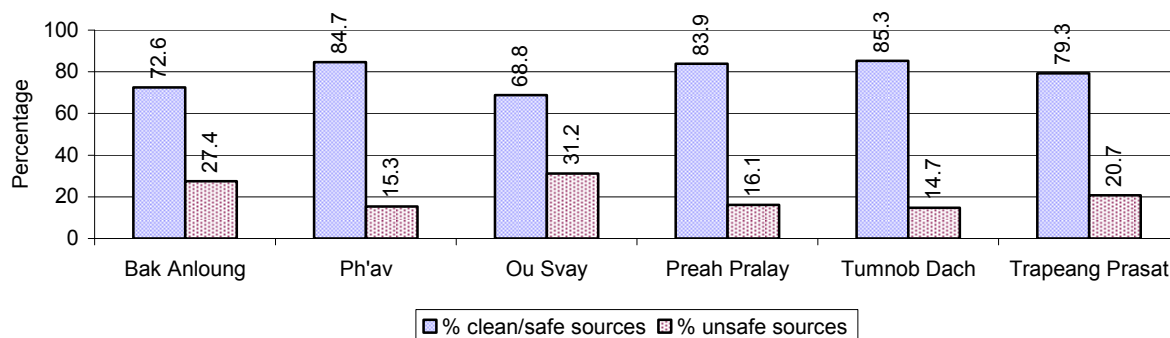
Note: Calculated as a percentage of the total number of families in each commune

3.3.9 Drinking Water Sources in the dry Season over 3 years

Percentage Families that get drinking water from:	2006	2007	2008	
	%	%	%	Number
from clean/safe sources	68 %	76 %	79 %	6,165 families
from unsafe sources	32 %	24 %	21 %	1,663 families

Note: Calculated as a percentage of the total number of families.

3.3.10 Percentage Families using safe and unsafe Water Sources in the dry Season, by Commune, in 2008



Note: Calculated as a percentage of the total number of families in each commune.

3.3.11 Drinking Water Purification by Households, over 3 years

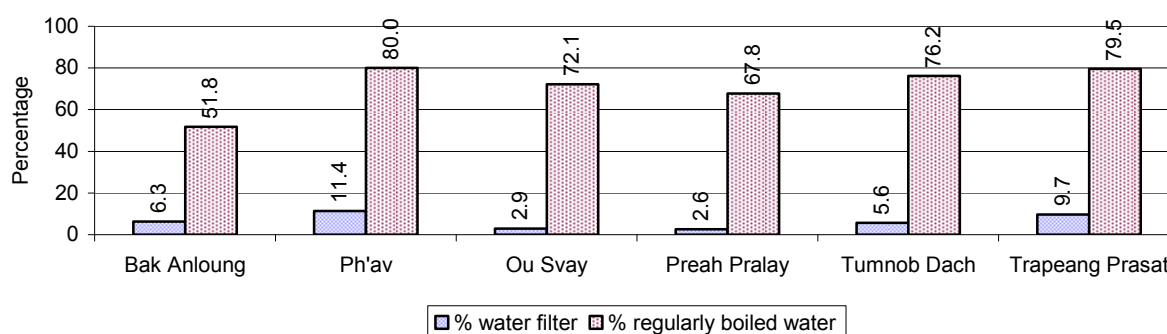
This table shows the different ways families make water safe for drinking.

Families, who:	2006	2007	2008	
	%	%	%	Number
Filter water for drinking	4%	9%	8 %	589 families
Boil water for drinking	67%	69%	75 %	5,884 families

Note: Calculated as a percentage of the total number of families

3.3.12 Percentage Families filtering Water or regularly boiling Water, by Commune, in 2008

This graph shows the different ways families make drinking water safe.



Note: Calculated on as a percentage of the total number of families in each commune.

3.3.13 Families' access to Water, over 3 years

Families access to water	2006	2007	2008	
	%	%	%	Number
Families with water at home or in less than 150m	50%	58%	45 %	3,502 families
Families with water 150m or more away from home	39%	31%	44 %	3,468 families

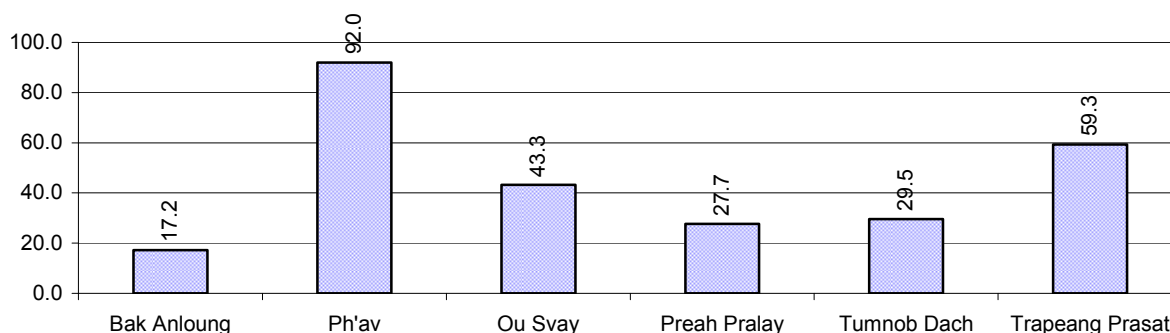
Note: Calculated as a percentage of the total number of families

3.3.14 Ratio of people to Latrines over 3 years

Description	2006	2007	2008	
	Ratio	Ratio	Ratio	Number
Ratio of people to latrines	54.6	25.0	43.6	828.0

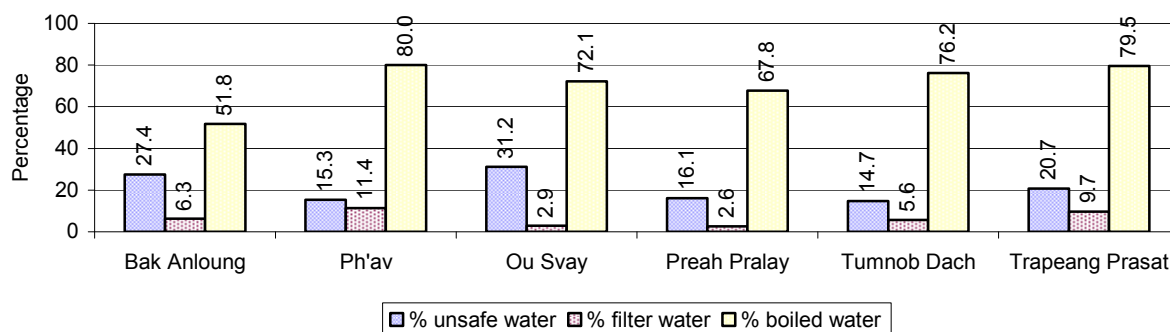
Note: Ratio calculated by dividing the number of houses with latrines by the total population

3.3.15 Ratio of People to Latrines, by Commune, in 2008



Note: Ratio calculated by dividing the number of houses with latrines by the total population in a Commune.

3.3.16 Percentage of Families drinking boiled, filtered or unsafe Water, by Commune, in 2008



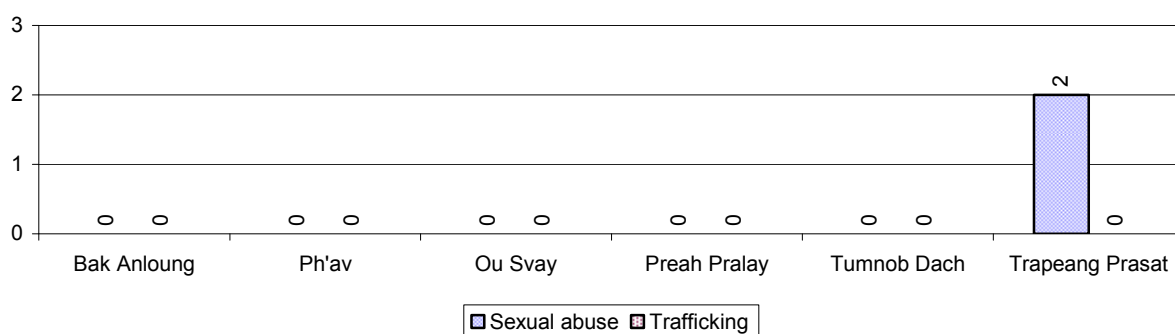
Note: Calculated as a percentage of the total number of families in each commune.

3.4 Vulnerable groups

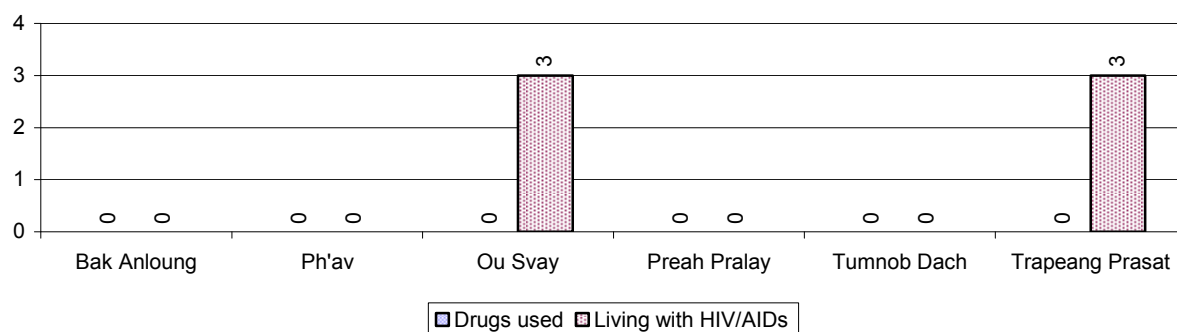
3.4.1 Vulnerable Groups in need of special Protection over 3 years

Vulnerable groups	2006	2007	2008
Victims of sexual abuse	1 person(s)	4 person(s)	2 person(s)
Victims of human trafficking	0 person(s)	0 person(s)	0 person(s)
Families with family member(s) using drugs	0 families	0 families	0 families
Families with family member(s) living with HIV/AIDS	1 families	1 families	6 families
Children under 18 yrs old whose parent died of AIDS	1 person(s)	0 person(s)	2 person(s)
Orphaned/abandoned children under 18 yrs old (all cases)	65 person(s)	54 person(s)	63 person(s)
Elderly persons without guardian	45 person(s)	8 person(s)	34 person(s)
Disabled people able to earn an income	45 person(s)	31 person(s)	60 person(s)
Disabled people unable to earn an income	17 person(s)	17 person(s)	33 person(s)
Disabled people under 18 yrs old	9 person(s)	12 person(s)	15 person(s)
Victims of natural disasters	1 families	20 families	47 families
Victims of land mines and unexploded weapons	21 person(s)	5 person(s)	8 person(s)

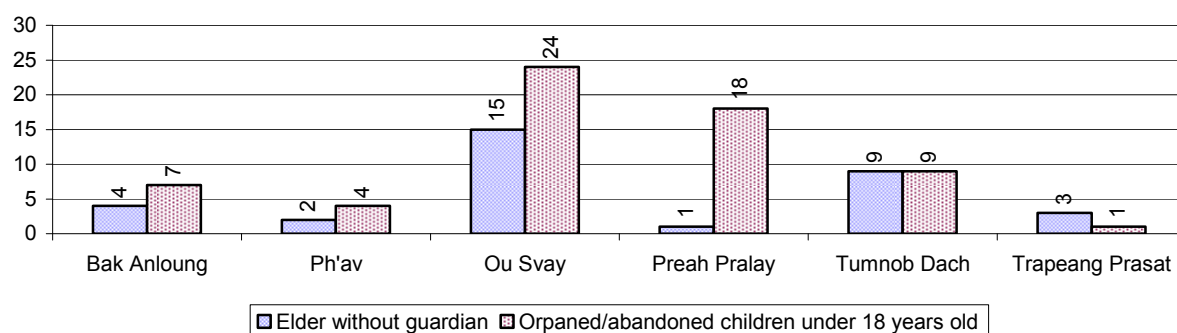
3.4.2 Registered Victims of sexual Abuse or Trafficking, by Commune, for 2008



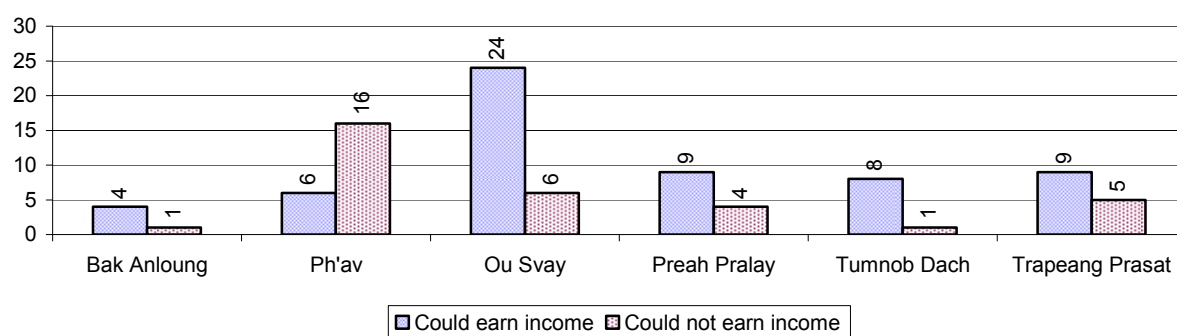
3.4.3 Registered Families with Member(s) using Drugs or living with HIV/AIDS, by Commune, for 2008



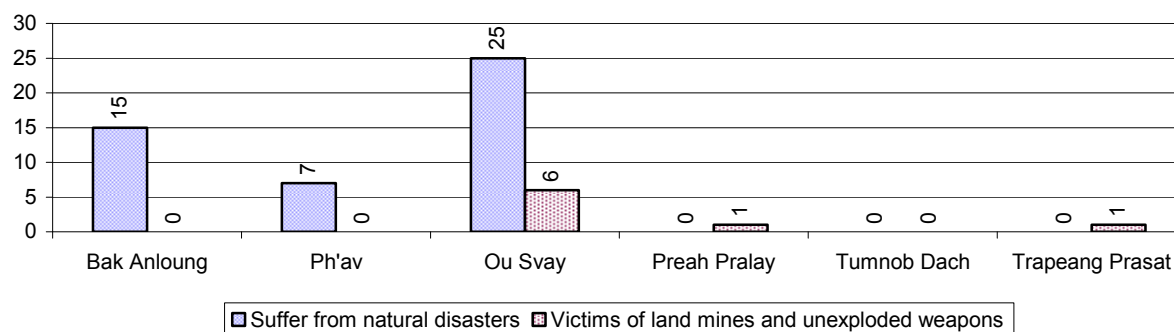
3.4.4 Elderly Persons without a Guardian and orphaned/abandoned Children under 18 years old, by Commune, for 2008



3.4.5 Number of disabled People who could or could not earn an Income, by Commune, for 2008



3.4.6 Number of Families who suffered from natural Disasters, and number of Victims of Land Mines and unexploded Weapons, by Commune, in 2008



3.5 Migration

3.5.1 Migration over 3 years

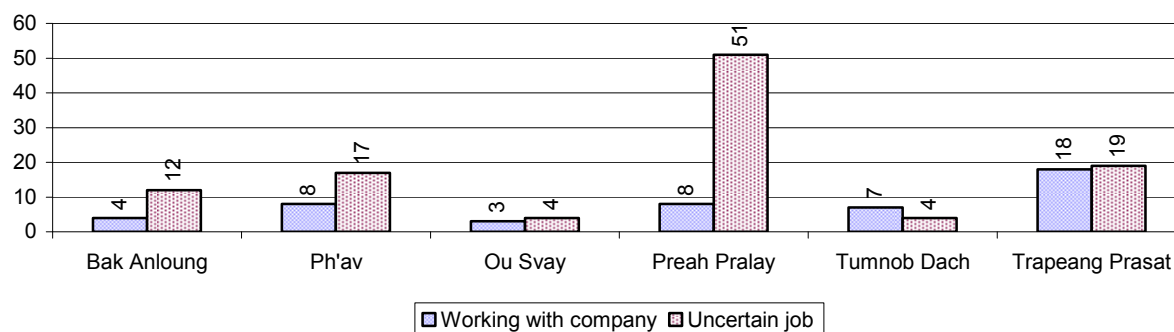
Description	2006	2007	2008
Number of families permanently in-migrated	971 families	525 families	1,212 families
Total number of people	3,716 person(s)	1,535 person(s)	4,449 person(s)
Total number of female	1,978 person(s)	749 person(s)	2,073 person(s)
Number of families permanently out-migrated	77 families	135 families	103 families
Total number of people	344 person(s)	548 person(s)	420 person(s)
Total number of female	197 person(s)	275 person(s)	198 person(s)
Number of families staying temporarily	85 families	99 families	181 families
Total number of people	334 person(s)	446 person(s)	611 person(s)
Total number of female	148 person(s)	187 person(s)	327 person(s)

3.5.2 Job Migration

Description	2006	2007	2008
Number of people migrated to work with company/factory	0%	1%	0%
Number of people migrated to work, but have uncertain jobs	1%	0%	1%

Note: Calculated as a percentage of the total population of 18-60 year olds

3.5.3 Number of People working outside their home Villages in a Company/Factory or with an uncertain Job in 2008

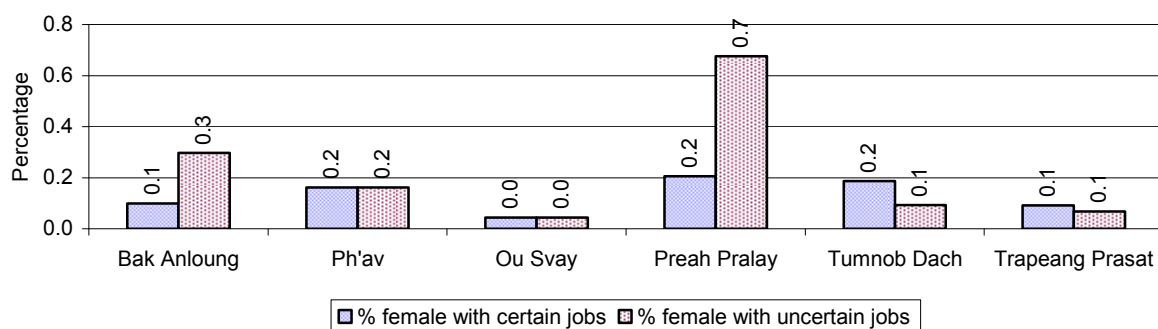


3.5.4 Female migration over 3 years

Description	2006 %	2007 %	2008	
			%	Number
Total number of migrants	0.4%	0.5%	0.4%	155 person(s)
Number of female migrants	0.2%	0.3%	0.3%	93 person(s)
Total number of migrants, who go to work with company/factory (with certain jobs)	0.2%	0.3%	0.1%	48 person(s)
Number of female migrants with certain jobs	0.1%	0.2%	0.1%	40 person(s)
Total number of migrants with uncertain jobs	0.3%	0.2%	0.3%	107 person(s)
Number of female migrants with uncertain jobs	0.1%	0.1%	0.1%	53 person(s)

Note: Calculated as a percentage of the total population

3.5.5 Percentage female Migrants with certain and uncertain Jobs, by Commune, in 2008



Note: Calculated as a percentage of the total population of the commune

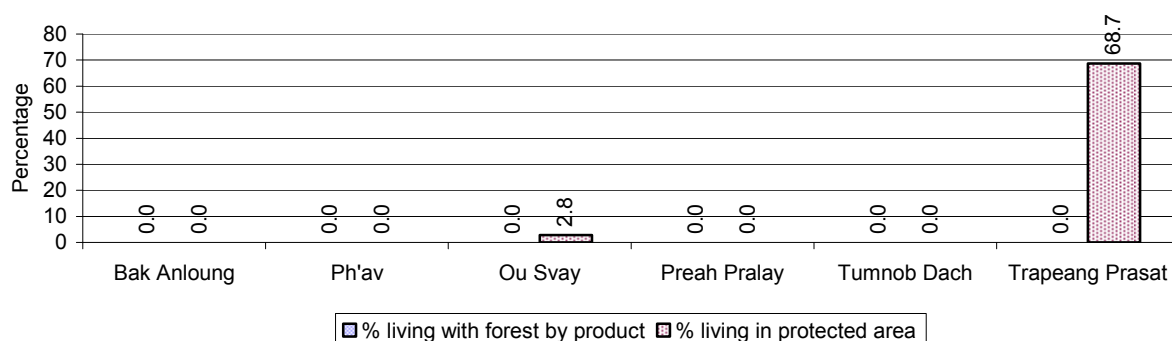
4 Natural Resources and Environment (NRE)

4.1 Families involved with NRE issues over 3 years

Description	2006 %	2007 %	2008	
			%	Number
Families living with forest by products	0 %	0 %	0 %	0 families
Families living in a protected area	63 %	41 %	32 %	2,541 families
Houses with access to garbage collection service	0 %	0 %	0 %	4 families
Families affected by environmental pollution	0 %	0 %	0 %	0 families
Families using chemical fertilizer	5 %	4 %	2 %	120 families
Families using chemical pesticide	6 %	5 %	10 %	811 families

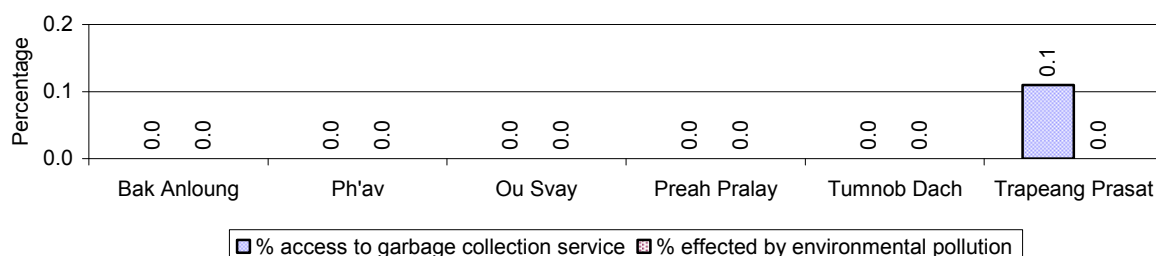
Note: Calculated as a percentage of the total number of families

4.2 Percentage of Families involved with Natural Resource issues, by Commune, for 2008



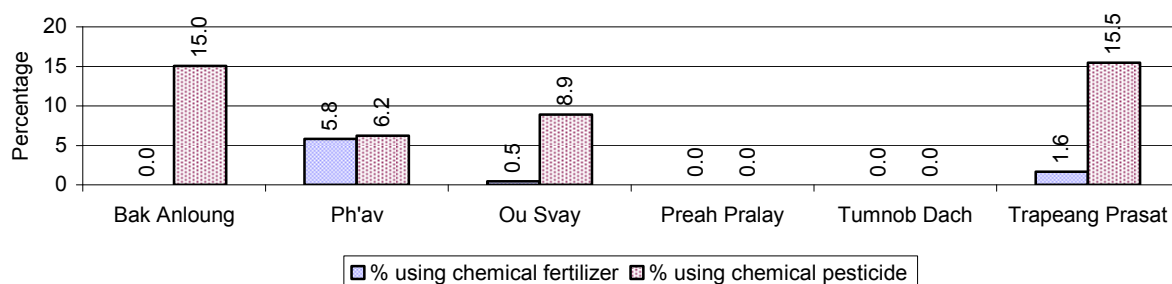
Note: Calculated as a percentage of the number of families in each commune

4.3 Percentage Houses with access to Garbage collection and Families affected by environmental Pollution, by Commune, for 2008



Note: Garbage collection is calculated as a percentage of the total number of houses in each commune and families affected by environmental pollution is calculated as a percentage of the total number of families in each commune.

4.4 Percentage Families using chemical Fertilizer and chemical Pesticides, by Commune, for 2008



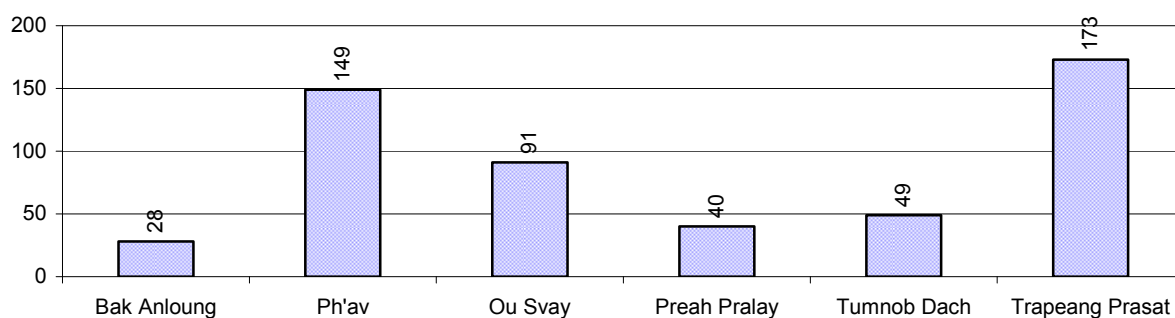
Note: Calculated as a percentage of the total number of families in each commune

5 Administration and Security

5.1 Birth Registration across 3 years

Description	2006	2007	2008
Number of infants to be registered	463 person(s)	578 person(s)	680 person(s)
Number of unregistered infants the year	288 person(s)	349 person(s)	530 person(s)
Percentage of infants unregistered	62 %	60 %	78 %

5.2 Number of unregistered Infants born in 2008, by Commune

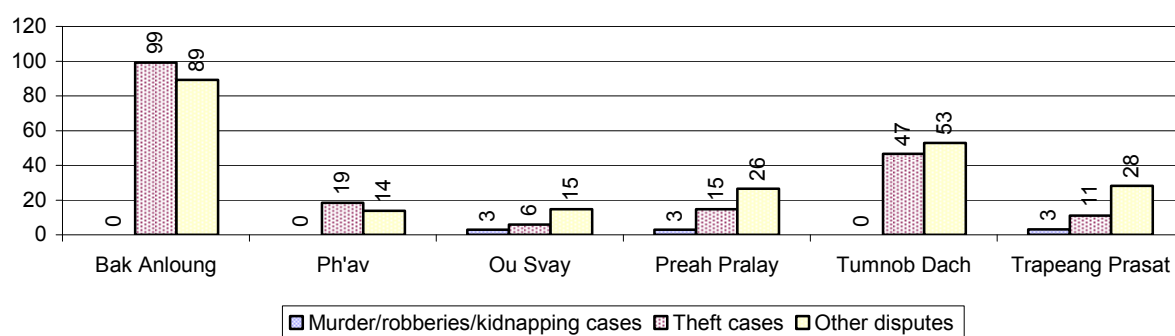


5.3 Registered criminal Cases over 3 years

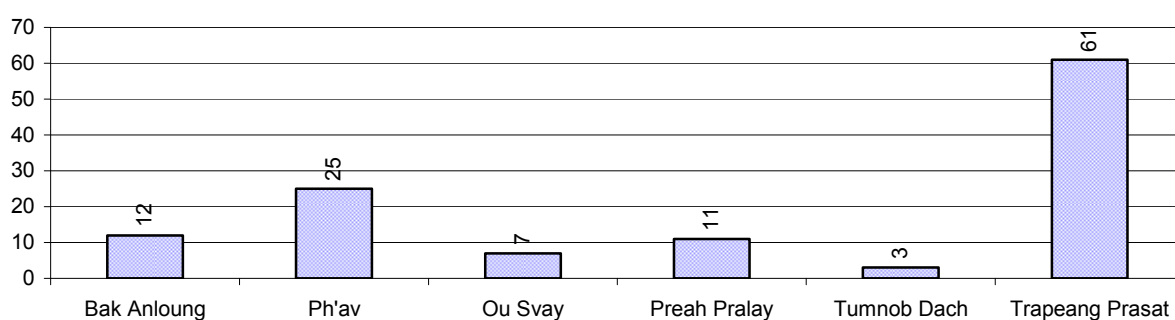
Description	2006	2007	2008
Murders, robberies and kidnapping cases	0 case(s)	0 case(s)	8 case(s)
Theft cases	11 case(s)	21 case(s)	70 case(s)
land dispute cases	37 case(s)	19 case(s)	119 case(s)
Other disputes cases	24 case(s)	16 case(s)	106 case(s)

Note: this reflects only registered criminal cases

5.4 Registered criminal Cases per 10,000 people, by Commune, for 2008



5.5 Number of registered Land Disputes, by Commune, in 2008

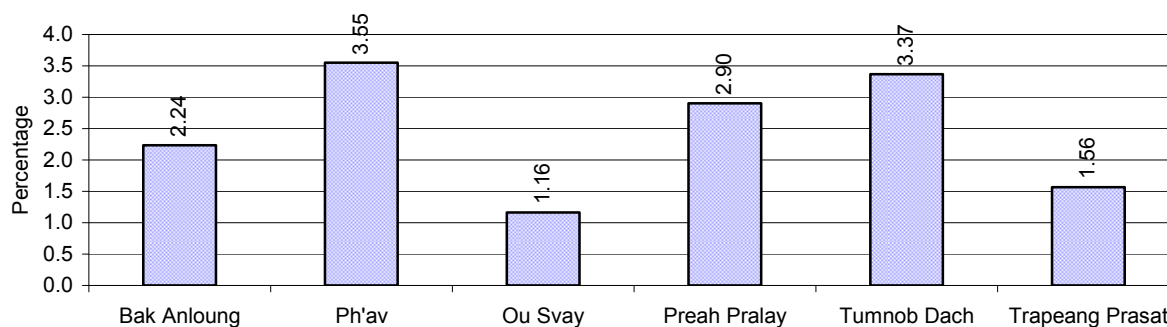


6 Gender

6.1 Registered Domestic Violence over 3 years

Description		2006	2007	2008
Families experiencing domestic violence		74 families	71 families	162 families(s)
% families experiencing domestic violence		1 %	1 %	2 %
Domestic violence cases reported by village chiefs		41 case(s)	37 case(s)	143 case(s)
Type	Physical violence	11 case(s)	12 case(s)	87 case(s)
	Sexual violence	3 case(s)	1 case(s)	8 case(s)
	Mental violence	19 case(s)	20 case(s)	37 case(s)
	Household economic violence	8 case(s)	4 case(s)	11 case(s)
Number of administrative decisions on domestic violence		0 case(s)	37 case(s)	143 case(s)
% of administrative decisions on domestic violence		0 %	100 %	100 %

6.2 Percentage of registered cases of Families experiencing domestic Violence, by Commune, in 2008



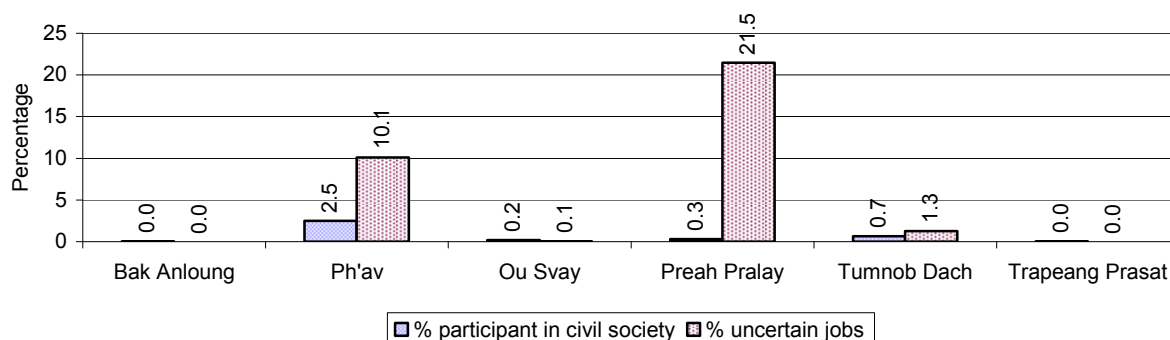
Note: Calculated as a percentage of the total number of families in each commune

6.3 Women's involvement over 3 years

Description	2006 %	2007 %	2008	
			%	Number
People participating in civil society	1%	1%	1%	414 person(s)
Women participating in civil society	1%	0%	0%	161 person(s)
People, 18-60 yrs, with uncertain/irregular jobs	0%	0%	6%	1,050 person(s)
Women, 18-60 yrs, with uncertain/irregular jobs	0%	0%	3%	562 person(s)

Note: Participation can be in NGOs, CBOs, credit groups, women's unions, parties and other civil society organizations. The first section is calculated as a percentage of the total population. The second section is calculated as a percentage of the total 18-60 year old population.

6.4 Percentage of Female Participants in Civil Society and of 18-60 year women with uncertain Jobs, by Commune, in 2008



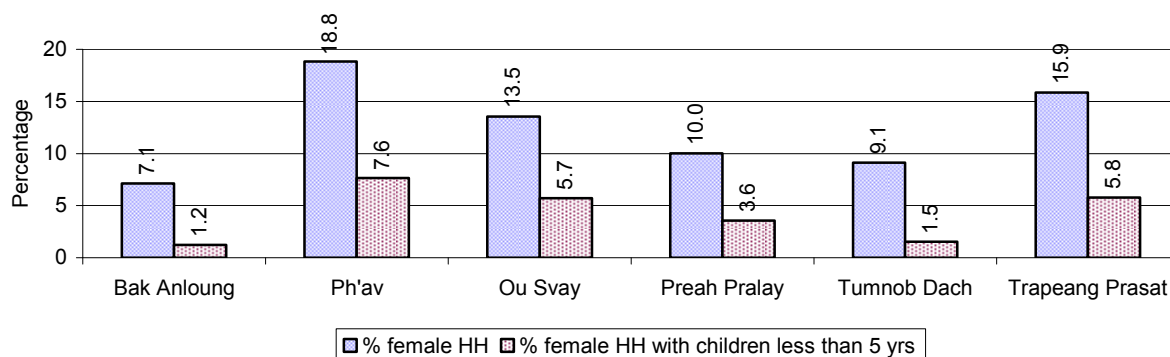
Note: Percentage of female participants in civil society is calculated as a percentage of the total population per commune. The percentage of 18-60 years old women with uncertain jobs is calculated as a percentage of the total 18-60 year old population per commune.

6.5 Female-headed Households over 3 years

Families with:	2006	2007	2008	
	%	%	%	Number
Households in which a woman is the family head	18%	13%	14%	1,104 families
Households in which a woman is the family head with children of less than 5 yrs	5%	3%	5%	399 families

Note: Calculated as a percentage of the total number of families

6.6 Percentage female-headed Households and with Children of less than 5 years old, by Commune, in 2008



Note: Calculated as a percentage of the total number of families in each commune
HH: Headed Household

7 Indigenous People in the District

7.1 Ethnic Minorities in the District over 3 years

Race of indigenous	2006		2007		2008	
	# families	# population	# families	# population	# families	# population
Phnong	14 families	84 person(s)	14 families	84 person(s)	53 families	264 person(s)
Kouy	0 families	0 person(s)	0 families	0 person(s)	11 families	5 person(s)
Stieng	1 families	11 person(s)	3 families	28 person(s)	1 families	11 person(s)
Mil	0 families	0 person(s)	0 families	0 person(s)	0 families	0 person(s)
Kroal	0 families	0 person(s)	1 families	5 person(s)	1 families	9 person(s)
Thmorn	0 families	0 person(s)	0 families	0 person(s)	0 families	0 person(s)
Khaonh	0 families	0 person(s)	0 families	0 person(s)	2 families	17 person(s)
Tompouonn	2 families	17 person(s)	2 families	18 person(s)	2 families	13 person(s)
Charay	2 families	13 person(s)	2 families	18 person(s)	0 families	0 person(s)
Kroeung	0 families	0 person(s)	0 families	0 person(s)	0 families	0 person(s)
Kavet	0 families	0 person(s)	0 families	0 person(s)	0 families	0 person(s)
Saouch	0 families	0 person(s)	0 families	0 person(s)	0 families	0 person(s)
Lun	0 families	0 person(s)	0 families	0 person(s)	0 families	0 person(s)
Kachak	0 families	0 person(s)	0 families	0 person(s)	0 families	0 person(s)
Praov	0 families	0 person(s)	0 families	0 person(s)	0 families	0 person(s)
Others	0 families	0 person(s)	0 families	0 person(s)	0 families	0 person(s)
Total	19 families	41 person(s)	22 families	69 person(s)	70 families	55 person(s)

Note: "Others" refer to other ethnic groups which are not listed.

7.2 Other Minorities in the District over 3 years

Minority	2006		2007		2008	
	# families	# population	# families	# population	# families	# population
Khmer Islamic	2 families	9 person(s)	3 families	14 person(s)	18 families	91 person(s)
Vietnamese	2 families	9 person(s)	0 families	0 person(s)	2 families	2 person(s)
Laos	0 families	0 person(s)	2 families	14 person(s)	0 families	0 person(s)

Note: Number of indigenous and minority population are additional data, so some village may not recorded.

SECTION C: PLANS AND PROJECTS

8 Priorities and Plans

8.1 Priorities of Commune Councils for 2009 in the District by Sector

The District Priority Activity Matrix (DPAM) data are taken from the CDPD. The DPAM is used for the District Integration Workshop (DIW), to show what kind of projects the commune has proposed in their Commune Investment Plan (CIP) for 2009. Donors, departments and other agencies then consider which projects they want to support and which projects they are not interested in. This results in Temporary Agreements between the Commune Council and the Supporter (NGO, Department, private donor, etc), as shown in table 8.2

No.	Project Name	Bak Anloun	Ph'av	Ou Svay	Preah Pralay	Tumnob Dach	Trapeang Prasat	Req.Project
		220501	220502	220503	220504	220505	220506	Total
Economic								
1	Compost fertilizer training	1 training	1 training	1 training		1 training		4
2	Chemical and pesticide application training		1 training					1
3	Vegetable growing training					22 place	1 training	3
4	Mixed farming system training	1 training	1 training		1 training			3
5	Rice seed production training	1 training	1 training	1 training	1 training	1 training	1 training	7
6	Rice field demonstration		1 training			1 training		2
7	Soil improvement techniques training		1 training					1
8	Subsidiary cropping technique training	1 training		1 training			1 training	3
9	Upland cropping training	1 training	1 training		1 training			3
10	Agricultural land expansion	2422 ha	188 ha	477 ha	286 ha		582 ha	5
11	Rice cultivation technique training				1 training	1 training	1 training	5
12	Corn cultivation demonstration					1 training	1 training	3
13	Animal vaccination request					797 Head	1355 Head	2
14	Village veterinary training	1 training				1 training	1 training	3
15	Animal raising training	1 training		1 training		1 training	1 training	4
16	Pig raising training		1 training					1
17	Livestock feed producing training	1 training	1 training			1 training	1 training	4
18	Rice seed request			3120 Kg	3400 Kg		5580 Kg	3
19	Fruit trees seedling request			1970 Tree				1
20	Family fish pond construction	160 Pond		113 Pond	110 Pond	111 Pond	215 Pond	5
21	Fish fingerling request	6000 fingerling		33900 fingerling	2500 fingerling	33900 fingerling	43000 fingerling	5
22	Earth road repair/construction	6300 m	14500 m	12000 m	13100 m	8150 m	40500 m	9
23	Laterite road repair/construction	8060 m			10050 m	6900 m	16600 m	4

District Data Book 2009: Development Plans and Projects

No.	Project Name	Bak Anloun	Ph'av	Ou Svay	Preah Pralay	Tumnob Dach	Trapeang Prasat	Req.Project
		220501	220502	220503	220504	220505	220506	Total
24	Bridge repair/construction	4 place	7 place		6 place	9 place	245 m	6
25	Culvert construct across road	31 place	25 place	5 place	6 place	22 place	32 place	6
26	Irrigation system construction/renovation						1200 m	1
27	Closed dam across canal construction/repair	105 m	2214 m	950 m	1600 m	300 m	360 m	7
28	Water pump station construction/repair						1 place	1
29	Weir construction/repair				60 m			1
30	Irrigation pond construction/rehabilitation		7 Pond	8 Pond		13 Pond		3
31	Cash credit		5000000 Riels					1
32	Rice seed bank				36 Kg			1
33	Cow bank					75 Head		1
34	Livestock bank		105 Head	70 Head				2
35	Power tillage			17 set		23 set		2
36	Water pump			8 set				1
Social								
1	Family planning	1 training	1 training	1 training		1 training		4
2	Reproductive health awareness education				1 training	1 training		3
3	Condom education					1 training		1
4	HIV/AIDS awareness education	1 training	1 training	1 training		1 training	1 training	6
5	Food safety and hygiene education					1 training		1
6	Health education service at health center		1 training					1
7	Women and children health care education	1 training						1
8	Children and women vaccination		1 training					1
9	Women immunization	1 time		3 time		1 time	1 time	4
10	Antenatal vaccination provision			1 time		1 time		2
11	VHV training	1 training						1
12	TBA training	1 training	1 training	1 training	1 training		1 training	5
13	Mosquito nets distribution/treatment		1014 mosqui-net	74 Time	33 bottle	283 bottle	69 bottle	11
14	Mosquito larvae removal treatment		1014 package		1186 package	3364 package	893 package	4
15	Health center construction/renovation						1 place	1
16	Health post construction/renovation	1 building				1 building	1 place	3

District Data Book 2009: Development Plans and Projects

No.	Project Name	Bak Anloung	Ph'av	Ou Svay	Preah Pralay	Tumnob Dach	Trapeang Prasat	Req.Project
		220501	220502	220503	220504	220505	220506	Total
17	Maternal health care education					1 training		1
18	Breastfeeding awareness education	1 training	1 training					2
19	Dig pump well construction/repair	35 well	7 well	4 well	478 well	5 well	20 well	12
20	Dig ring well construction/repair	15 well				8 well	43 well	3
21	Pond water construction/rehabilitation	24 Pond						1
22	Latrine construction	2105 toilet	305 toilet	144 toilet	478 toilet	133 toilet	672 toilet	6
23	Sanitation education	1 training	1 training	1 training	1 training		1 training	7
24	Village health post construction		10 well					1
25	Literacy class	3 class		5 class	6 class		8 class	4
26	Literacy teacher support			5 person	6 person		8 person	3
27	School building/furniture					1 schools		1
28	Junior high school construction			6 room				1
29	School building	1 building	2 building	1 building	1 building		1 building	5
30	Kindergarten school construction/repair		1 building	1 building			6 building	3
31	Kid center creation/support					2 place		1
32	Pre-school teacher/kid keeper support		4 person			2 person	6 person	3
33	Motivating pupil's parents for school enrollment	5 schools						1
34	Teacher/volunteer teacher need				6 person	5 person		2
35	Food/meal provision to school children	7 schools	1 schools	2 schools				3
36	Vocational training		1 training				1 training	2
37	Skill training project		1 training				1 training	2
38	School sport facilities/equipment project	4 set						1
NREM								
1	Environmental awareness and law education		1 training	1 training	1 training	1 training		4
2	Forestry law education	1 training		1 training	1 training	1 training		4
3	Establishment of NREM committee	9 Team	1 training			1 training	8 Team	6
4	Education on the effect of polluted water				1 training	1 training		2
5	Establishment of NREM protection community			5 Team			1 training	2
6	Kravanh essence awareness dissemination		5 Team					1
7	NREM programme		1 training	1 training			1 Team	3
8	Solving rubbish problems				1 training	1 training	1 training	4
9	Household waste management education				1 training			1
10	Family waste bin encouragement	90						1

District Data Book 2009: Development Plans and Projects

No.	Project Name	Bak Anloung	Ph'av	Ou Svay	Preah Pralay	Tumnob Dach	Trapeang Prasat	Req.Project
		220501	220502	220503	220504	220505	220506	Total
		Garbage bin						
11	Waste management education	1 training	1 training	1 training		1 training	1 training	5
12	Waste control measurement	1 training						1
Administration and Security								
1	Civil registration encouragement				1 training			1
2	Administration and commune law training	1 training		1 training		1 training	1 training	4
3	Village level capacity building				1 training			1
4	Human rights and law training	1 training		1 training	1 training	1 training		5
5	Citizen education and conflict resolution facilitation				1 training			1
6	Village/commune data collection strengthening				1 training			1
7	Land law dissemination	1 training		1 training	1 training		1 training	4
8	Drug and related law education						1 training	1
9	Police post construction/renovation			1 training				1
10	Temporary dwellers management/control	1 training						1
11	Local police capacity building/strengthening	1 training	1 training	1 training			1 training	5
12	Local security regulation/order dissemination	1 training						1
13	Demining project		81 ha	868 ha	119 ha	153 ha	32 ha	5
14	Human right and related law education		1 training					1
15	Traffic law and public order dissemination		1 training			1 training		2
16	Business and taxation law dissemination					1 training		1
Gender								
1	Gender mainstreaming concept training	1 training		1 training	1 training	1 training	1 training	6
2	Gender mainstreaming among local people						8 training	1
3	Gender training for CC		1 training					1
4	Gender and child rights dissemination		1 training					1
5	Gender FP strengthening						1 training	1
6	Facilitation skill training to gender focal point		1 training					1
7	Woman and children's rights dissemination			1 training			1 training	2
8	Khmer woman tradition dissemination			1 training				1
9	Non-coerce marriage awareness education	1 training		1 training				2
10	Women vocational training		1 training			1 training	1 training	3
11	Food cooking/processing skill training			1 training			1 training	2
12	Sewing center construction/operation	1 training	1 training		1 training			3

District Data Book 2009: Development Plans and Projects

No.	Project Name	Bak Anloun	Ph'av	Ou Svay	Preah Pralay	Tumnob Dach	Trapeang Prasat	Req.Project
		220501	220502	220503	220504	220505	220506	Total
13	Law against domestic violence dissemination	1 training	1 training	1 training	1 training		1 training	6
14	Law against trafficking dissemination		1 training					1
15	Trafficking of women/children control activity strengthening	1 training					1 training	2
16	Protection network for women and children dissemination				1 training			1
17	Trafficking information disseminations					1 training		1
18	Swindle trick of broker prevention education	1 training		1 training		1 training	1 training	5
19	Sexual violence/harassment protection law dissemination	1 training			1 training	1 training		3

Source: CDPD – District Priority Matrix

8.2 Temporary Agreements by Commune, for 2009²

At the District Integration Workshop (DIW) the Supporters (donors, agencies, private donors, NGOs, etc.) identify which projects/activities they would like to support or they put forward their own projects to be implemented in a particular commune. Once there is agreement between Commune Councils and Supporters on specific projects a **Temporary Agreement** is signed by the commune and the Supporter to show their mutual commitment to the identified projects/activities.

It is important to keep in mind that such Temporary Agreements do not necessarily result in implementation.

8.2.1 Temporary Agreements for 2009 as per DIW 2008 for Commune: Bak Anloun

Commune GIS	Commune	Temporary Agreements				Supporter	Funding Source	Listed in CIP befor DIW
		Project Name	Quantity	Unit	Est.Cost (K.Riels)			
Social								
220501	Bak Anloun	Provincial level quarterly meeting with technical departments on community strengthening	2	time	243	Department of Women		<input type="checkbox"/>
220501	Bak Anloun	Family planning	1	training	100	Department of Health		✓
220501	Bak Anloun	Dig pump well construction/repair	8	well	440	Department of Rural Development		✓
220501	Bak Anloun	Health post construction/renovation	1	building	240000	Department of Health		✓
220501	Bak Anloun	Pump wells repairing technique training	1	training	400	Department of Rural Development		<input type="checkbox"/>
220501	Bak Anloun	Water quality test	8	well	200	Department of Rural Development		<input type="checkbox"/>
220501	Bak Anloun	TBA training	1	training	80	Department of Health		✓
220501	Bak Anloun	District level training on community kindergarten operation	1	Course/year	300	Department of Women		<input type="checkbox"/>
220501	Bak Anloun	Malaria blood test mission at remote villages	1	time	1000	Department of Health		<input type="checkbox"/>
220501	Bak Anloun	Vitamins A supply to baby delivered women	1	time	500	Department of Health		<input type="checkbox"/>

² Not all the data from the CDPD has been translated to English, this has resulted in some cells in the TA tables being blank.

District Data Book 2009: Development Plans and Projects

Commune GIS	Commune	Temporary Agreements				Supporter	Funding Source	Listed in CIP before DIW
		Project Name	Quantity	Unit	Est.Cost (K.Riels)			
220501	Bak Anloun	Vitamin A supply to children and deworming to school children	1	time	500	Department of Health		<input type="checkbox"/>
220501	Bak Anloun	Vitamin A provision for children	1	time	500	Department of Health		<input type="checkbox"/>
220501	Bak Anloun	Impregnated mosquito net provision	1	time	0	Department of Health		<input type="checkbox"/>
220501	Bak Anloun	Abet distribution for mosquito larvae removal treatment	1	time	0	Department of Health		<input type="checkbox"/>
220501	Bak Anloun	Children and women vaccinating support	1	time	0	Department of Health		<input type="checkbox"/>
220501	Bak Anloun	Re-impregnating mosquito net	2	time	0	Department of Health		<input type="checkbox"/>
220501	Bak Anloun	Pregnant awareness education	1	time	0	Department of Health		<input type="checkbox"/>
220501	Bak Anloun	Villager's health feedback meeting	1	time	500	Department of Health		<input type="checkbox"/>
NREM								
220501	Bak Anloun	Tourist resort billboard installation	1	piece	2664	Department of Women		<input type="checkbox"/>
Administration and Security								
220501	Bak Anloun	Labor law dissemination to CC	1	Course/year	4000	Department of Labor and Vocational Training		<input type="checkbox"/>
220501	Bak Anloun	Semester meeting between kindergarten project committee and beneficiaries	2	time	172	Department of Women		<input type="checkbox"/>
220501	Bak Anloun	Land law dissemination	1	training	800	Department of Land Management, Urban Planning & Construction		✓
Gender								
220501	Bak Anloun	Sexual violence/harassment protection law dissemination	1	training	240	Department of Tourism		✓
220501	Bak Anloun	Annual provincial level workshop on WCFPs activities reflection	1	Course/year	246	Department of Women		<input type="checkbox"/>
220501	Bak Anloun	Dissemination of elimination of all forms of discrimination against women	1	Course/year	243	Department of Women		<input type="checkbox"/>

Commune GIS	Commune	Temporary Agreements				Supporter	Funding Source	Listed in CIP before DIW
		Project Name	Quantity	Unit	Est.Cost (K.Riels)			
220501	Bak Anloun	CWCC meeting on gender mainstreaming in sector plans	1	time	243	Department of Women		<input type="checkbox"/>
220501	Bak Anloun	District woman focal point capacity strengthening	1	Course/year	91	Department of Women		<input type="checkbox"/>
220501	Bak Anloun	Female village leader, WCFPs and female councilors forum support	2	Course/year	843	Department of Women		<input type="checkbox"/>

8.2.2 Temporary Agreements for 2009 as per DIW 2008 for Commune: Ph'av

Commune GIS	Commune	Temporary Agreements				Supporter	Funding Source	Listed in CIP before DIW
		Project Name	Quantity	Unit	Est.Cost (K.Riels)			
Social								
220502	Ph'av	Breastfeeding awareness education	1	time	200	Department of Health		<input type="checkbox"/>
220502	Ph'av	Breastfeeding awareness education	1	training	200	Department of Health		✓
220502	Ph'av	Family planning	1	training	1000	Department of Health		✓
220502	Ph'av	Children and women vaccination	1	training	1000	Department of Health		✓
220502	Ph'av	Mosquito nets distribution/treatment	0	mosqui-net	1000	Department of Health		✓
220502	Ph'av	Dig pump well construction/repair	5	well	440	Department of Rural Development		✓
220502	Ph'av	Health care improvement (Chara's program)	1	time	2800	Department of Health		<input type="checkbox"/>
220502	Ph'av	Pump wells maintenance training	1	time	40	Department of Rural Development		<input type="checkbox"/>
220502	Ph'av	Water quality control	1	time	20	Department of Rural Development		<input type="checkbox"/>
220502	Ph'av	TBA training	1	training	200	Department of Health		✓
220502	Ph'av	Antenatal and postnatal care awareness education	1	time	200	Department of Health		<input type="checkbox"/>
220502	Ph'av	Vitamin A and deworming pills supply to children	1	time	6000	Department of Health		<input type="checkbox"/>
220502	Ph'av	Pump wells construction supported by	1	well	7200	Cambodian Red Cross		<input type="checkbox"/>

District Data Book 2009: Development Plans and Projects

Commune GIS	Commune	Temporary Agreements				Supporter	Funding Source	Listed in CIP before DIW
		Project Name	Quantity	Unit	Est.Cost (K.Riels)			
		French Red Cross						
220502	Ph'av	Pump wells repair	1	well	524	Cambodian Red Cross		<input type="checkbox"/>
220502	Ph'av	Safe water awareness	1	training	20	Cambodian Red Cross		<input type="checkbox"/>
220502	Ph'av	Abet distribution for mosquito larvae removal treatment	1	time	3172	Department of Health		<input type="checkbox"/>
Administration and Security								
220502	Ph'av	Labor law dissemination to CC	1	training	400	Department of Land Management, Urban Planning & Construction		<input type="checkbox"/>
220502	Ph'av	Commune meeting for mine field data gathering	1	time	94	Land Used Planning Unit		<input type="checkbox"/>
220502	Ph'av	District workshop for mine field data gathering and prioritizing	1	time	320	Land Used Planning Unit		<input type="checkbox"/>
220502	Ph'av	Provincial workshop to approve demining plan	1	time	1060	Land Used Planning Unit		<input type="checkbox"/>
220502	Ph'av	Mine field survey mission and visit demining land beneficiaries	1	time	608	Land Used Planning Unit		<input type="checkbox"/>
220502	Ph'av	Demining land acquisition follow up and supervision	1	time	610	Land Used Planning Unit		<input type="checkbox"/>
220502	Ph'av	Cadastral law dissemination to CC and village chiefs	1	time	800	Department of Land Management, Urban Planning & Construction		<input type="checkbox"/>
Gender								
220502	Ph'av	Law against trafficking dissemination	1	training	240	Department of Tourism		✓

8.2.3 Temporary Agreements for 2009 as per DIW 2008 for Commune: Ou Svay

Commune GIS	Commune	Temporary Agreements				Supporter	Funding Source	Listed in CIP before DIW
		Project Name	Quantity	Unit	Est.Cost (K.Riels)			
Social								
220503	Ou Svay	Vitamin A provision	1	time	600	Department of Health		<input type="checkbox"/>
220503	Ou Svay	Sanitation education	1	training	600	Cambodian Red Cross		<input checked="" type="checkbox"/>
220503	Ou Svay	TBA training	1	training	750	Department of Health		<input checked="" type="checkbox"/>
220503	Ou Svay	Family planning	1	training	150	Department of Health		<input checked="" type="checkbox"/>
220503	Ou Svay	Mosquito nets distribution/treatment	0	mosqui-net	0	Department of Health		<input checked="" type="checkbox"/>
220503	Ou Svay	Mosquito nets distribution/treatment	0	Time	0	Department of Health		<input checked="" type="checkbox"/>
220503	Ou Svay	Pump wells repairing technique training	1	time	40	Department of Rural Development		<input type="checkbox"/>
220503	Ou Svay	Water quality test	1	time	20	Department of Rural Development		<input type="checkbox"/>
220503	Ou Svay	Health care improvement (Chara's program)	2	time	2800	Department of Health		<input type="checkbox"/>
220503	Ou Svay	Vaccinating for women and children	1	time	1200	Department of Health		<input type="checkbox"/>
220503	Ou Svay	Abet distribution for mosquito larvae removal treatment	1	time	217	Department of Health		<input type="checkbox"/>
220503	Ou Svay	Dig pump well construction/repair	1	well	7200	Cambodian Red Cross		<input checked="" type="checkbox"/>
220503	Ou Svay	Breastfeeding awareness education	1	time	240	Department of Health		<input type="checkbox"/>
220503	Ou Svay	Semester meeting between kindergarten project committee and beneficiaries	2	time	172	Department of Women		<input type="checkbox"/>
220503	Ou Svay	District level training on community kindergarten operation	1	training	300	Department of Women		<input type="checkbox"/>
220503	Ou Svay	Semester meeting at provincial level to strengthen community kindergarten	2	time	136	Department of Women		<input type="checkbox"/>
220503	Ou Svay	Antenatal and postnatal care awareness education	1	time	200	Department of Health		<input type="checkbox"/>
220503	Ou Svay	Wells repairing technique training	1	time	209	Cambodian Red Cross		<input type="checkbox"/>
Administration and Security								
220503	Ou Svay	Provincial workshop to approve demining plan	1	time	1060	Land Used Planning Unit		<input type="checkbox"/>

District Data Book 2009: Development Plans and Projects

Commune GIS	Commune	Temporary Agreements				Supporter	Funding Source	Listed in CIP befor DIW
		Project Name	Quantity	Unit	Est.Cost (K.Riels)			
220503	Ou Svay	Demining land acquisition follow up and supervision	1	time	608	Land Used Planning Unit		<input type="checkbox"/>
220503	Ou Svay	Land law dissemination	1	training	400	Department of Land Management, Urban Planning & Construction		✓
220503	Ou Svay	Mine field survey mission and visit demining land beneficiaries	1	time	608	Land Used Planning Unit		<input type="checkbox"/>
220503	Ou Svay	District workshop for mine field data gathering and prioritizing	1	time	320	Land Used Planning Unit		<input type="checkbox"/>
220503	Ou Svay	Commune meeting for mine field information gathering	1	time	92	Land Used Planning Unit		<input type="checkbox"/>
Gender								
220503	Ou Svay	District and commune woman focal point capacity strengthening	1	time	91	Department of Women		<input type="checkbox"/>
220503	Ou Svay	Female village leader and female councilors forum support at district level	2	time	880	Department of Women		<input type="checkbox"/>
220503	Ou Svay	Annual workshop of WCFPs	1	time	246	Department of Women		<input type="checkbox"/>
220503	Ou Svay	Dissemination of elimination of all forms of discrimination against women	1	time	240	Department of Women		<input type="checkbox"/>
220503	Ou Svay	CWCC meeting on gender mainstreaming in sector plans	1	time	243	Department of Women		<input type="checkbox"/>
220503	Ou Svay	Swindle trick of broker prevention education	1	training	240	Department of Tourism		✓

8.2.4 Temporary Agreements for 2009 as per DIW 2008 for Commune: Preah Pralay

Commune GIS	Commune	Temporary Agreements				Supporter	Funding Source	Listed in CIP before DIW
		Project Name	Quantity	Unit	Est.Cost (K.Riels)			
Social								
220504	Preah Pralay	Vitamin A and deworming pills supply to children	1	time	1200	Department of Health		<input type="checkbox"/>
220504	Preah Pralay	Mosquito nets distribution/treatment	0	mosqui-net	587	Department of Health		✓
220504	Preah Pralay	Mosquito nets distribution/treatment	1	time	587	Department of Health		✓
220504	Preah Pralay	Mosquito larvae removal treatment	1	time	587	Department of Health		✓
220504	Preah Pralay	TBA training	1	training	200	Department of Health		✓
220504	Preah Pralay	Family planning program	1	training	587	Department of Health		<input type="checkbox"/>
220504	Preah Pralay	Dig pump well construction/repair	4	well	440	Department of Rural Development		✓
220504	Preah Pralay	Breastfeeding awareness education	1	training	200	Department of Health		<input type="checkbox"/>
220504	Preah Pralay	Semester meeting between kindergarten project committee and beneficiaries	2	time	172	Department of Women		<input type="checkbox"/>
220504	Preah Pralay	District level training on community kindergarten operation	1	training	300	Department of Women		<input type="checkbox"/>
220504	Preah Pralay	Semester meeting at provincial level to strengthen community kindergarten	2	time	136	Department of Women		<input type="checkbox"/>
220504	Preah Pralay	Antenatal and postnatal care awareness education	1	training	200	Department of Health		<input type="checkbox"/>
Administration and Security								
220504	Preah Pralay	Labor law dissemination to CC and village chiefs	1	training	400	Department of Land Management, Urban Planning & Construction		<input type="checkbox"/>
220504	Preah Pralay	Land law dissemination	1	training	800	Department of Land Management, Urban Planning & Construction		✓

Commune GIS	Commune	Temporary Agreements				Supporter	Funding Source	Listed in CIP before DIW
		Project Name	Quantity	Unit	Est.Cost (K.Riels)			
Gender								
220504	Preah Pralay	District and commune woman focal point capacity strengthening	1	time	91	Department of Women		<input type="checkbox"/>
220504	Preah Pralay	Protection network for women and children dissemination	1	training	240	Department of Tourism		✓
220504	Preah Pralay	Village female leaders and women focal point forum	2	time	843	Department of Women		<input type="checkbox"/>
220504	Preah Pralay	Annual provincial level workshop on WCFPs activities reflection	1	training	246	Department of Women		<input type="checkbox"/>
220504	Preah Pralay	Dissemination of elimination of all forms of discrimination against women	1	time	240	Department of Women		<input type="checkbox"/>
220504	Preah Pralay	CWCC meeting on gender mainstreaming in sector plans	1	time	240	Department of Women		<input type="checkbox"/>

8.2.5 Temporary Agreements for 2009 as per DIW 2008 for Commune: Tumnob Dach

Commune GIS	Commune	Temporary Agreements				Supporter	Funding Source	Listed in CIP befor DIW
		Project Name	Quantity	Unit	Est.Cost (K.Riels)			
Social								
220505	Tumnob Dach	Community lead sanitation practice	1	time	2000	Cambodian Red Cross		<input type="checkbox"/>
220505	Tumnob Dach	Mosquito nets distribution/treatment	1	time	0	Department of Health		✓
220505	Tumnob Dach	TBA meeting	1	time	1000	Department of Health		<input type="checkbox"/>
220505	Tumnob Dach	Antenatal and postnatal care awareness education	1	training	2000	Department of Health		<input type="checkbox"/>
220505	Tumnob Dach	Vaccinating for women and children	1	time	500	Department of Health		<input type="checkbox"/>
220505	Tumnob Dach	Abet distribution for mosquito larvae removal treatment	1	time	9000	Department of Health		<input type="checkbox"/>
220505	Tumnob Dach	WATSAN committee technical training	1	training	2000	Cambodian Red Cross		<input type="checkbox"/>

District Data Book 2009: Development Plans and Projects

Commune GIS	Commune	Temporary Agreements				Supporter	Funding Source	Listed in CIP before DIW
		Project Name	Quantity	Unit	Est.Cost (K.Riels)			
220505	Tumnob Dach	Vitamin supply for children	1	time	2000	Department of Health		<input type="checkbox"/>
220505	Tumnob Dach	WATSAN committee training	1	time	2000	Cambodian Red Cross		<input type="checkbox"/>
220505	Tumnob Dach	Deworming at school	1	time	2000	Department of Health		<input type="checkbox"/>
220505	Tumnob Dach	Health care improvement	1	time	4004	Department of Health		<input type="checkbox"/>
220505	Tumnob Dach	Water quality control	3	well	60	Department of Rural Development		<input type="checkbox"/>
220505	Tumnob Dach	Pump wells repairing technique training	1	time	4000	Department of Rural Development		<input type="checkbox"/>
220505	Tumnob Dach	Dig pump well construction/repair	1	well	770	Cambodian Red Cross		✓
220505	Tumnob Dach	Dig pump well construction/repair	3	well	140	Department of Rural Development		✓
220505	Tumnob Dach	Family planning	1	training	1000	Department of Health		✓
220505	Tumnob Dach	Mosquito nets distribution/treatment	1	time	0	Department of Health		✓
220505	Tumnob Dach	Health and sanitation education	1	training	2000	Cambodian Red Cross		<input type="checkbox"/>
220505	Tumnob Dach	Semester meeting between kindergarten project committee and beneficiaries	2	time	172	Department of Women		<input type="checkbox"/>
220505	Tumnob Dach	Vitamins A supply to baby delivered women	1	time	2000	Department of Health		<input type="checkbox"/>
220505	Tumnob Dach	Malaria blood test mission at remote villages	1	time	2000	Department of Health		<input type="checkbox"/>
220505	Tumnob Dach	Semester meeting at provincial level to strengthen community kindergarten	1	time	136	Department of Women		<input type="checkbox"/>
220505	Tumnob Dach	District level training on community kindergarten operation	1	training	300	Department of Women		<input type="checkbox"/>
220505	Tumnob Dach	Village health worker meeting	1	time	400	Department of Health		<input type="checkbox"/>

District Data Book 2009: Development Plans and Projects

Commune GIS	Commune	Temporary Agreements				Supporter	Funding Source	Listed in CIP befor DIW
		Project Name	Quantity	Unit	Est.Cost (K.Riels)			
Administration and Security								
220505	Tumnob Dach	Labor law dissemination to CC	1	training	400	Department of Labor and Vocational Training		<input type="checkbox"/>
220505	Tumnob Dach	Demining land acquisition follow up and supervision	1	time	608	Land Used Planning Unit		<input type="checkbox"/>
220505	Tumnob Dach	Mine field survey mission and visit demining land beneficiaries	1	time	608	Land Used Planning Unit		<input type="checkbox"/>
220505	Tumnob Dach	Provincial workshop to approve demining plan	1	time	1060	Land Used Planning Unit		<input type="checkbox"/>
220505	Tumnob Dach	District workshop to prioritize mine field	1	time	320	Land Used Planning Unit		<input type="checkbox"/>
220505	Tumnob Dach	Commune meeting for mine field data gathering	1	time	95	Land Used Planning Unit		<input type="checkbox"/>
220505	Tumnob Dach	Land law education for CC and village chiefs	1	training	800	Department of Land Management, Urban Planning & Construction		<input type="checkbox"/>
Gender								
220505	Tumnob Dach	District woman focal point capacity strengthening	1	training	84	Department of Women		<input type="checkbox"/>
220505	Tumnob Dach	Swindle trick of broker prevention education	1	training	240	Department of Tourism		✓
220505	Tumnob Dach	Female village leader, WCFPs and female councilors forum support	1	training	843	Department of Women		<input type="checkbox"/>
220505	Tumnob Dach	Annual provincial level workshop on WCFPs activities reflection	1	training	246	Department of Women		<input type="checkbox"/>
220505	Tumnob Dach	Dissemination of elimination of all forms of discrimination against women	1	time	240	Department of Women		<input type="checkbox"/>
220505	Tumnob Dach	CWCC meeting on gender mainstreaming in sector plans	1	time	240	Department of Women		<input type="checkbox"/>

8.2.6 Temporary Agreements for 2009 as per DIW 2008 for Commune: Trapeang Prasat

Commune GIS	Commune	Temporary Agreements				Supporter	Funding Source	Listed in CIP before DIW
		Project Name	Quantity	Unit	Est.Cost (K.Riels)			
Social								
220506	Trapeang Prasat	Sanitation education	1	training	0	Cambodian Red Cross		✓
220506	Trapeang Prasat	Women immunization	1	time	0	Department of Health		✓
220506	Trapeang Prasat	Family planning program	1	time	1400	Department of Health		□
220506	Trapeang Prasat	Antenatal health care education	1	time	140	Department of Health		□
220506	Trapeang Prasat	Water quality test	8	well	20	Department of Rural Development		□
220506	Trapeang Prasat	Pump wells use training	8	well	40	Department of Rural Development		□
220506	Trapeang Prasat	Deworming pills supply to children	1	time	800	Department of Health		□
220506	Trapeang Prasat	Health care improvement (Chara's program)	1	time	800	Department of Health		□
220506	Trapeang Prasat	Vitamins supply at postnatal period	1	time	100	Department of Health		□
220506	Trapeang Prasat	Dig pump well construction/repair	1	well	7200	Cambodian Red Cross		✓
220506	Trapeang Prasat	Dig pump well construction/repair	8	well	440	Department of Rural Development		✓
220506	Trapeang Prasat	TBA training	1	training	0	Department of Health		✓
220506	Trapeang Prasat	Mosquito larvae removal treatment	1	time	0	Department of Health		✓
220506	Trapeang Prasat	Mosquito nets distribution/treatment	0	bottle	0	Department of Health		✓
220506	Trapeang Prasat	Mosquito nets distribution/treatment	0	mosqui-net	0	Department of Health		✓
220506	Trapeang Prasat	Latrine pilot project	4	toilet	8000	Department of Health		□

District Data Book 2009: Development Plans and Projects

Commune GIS	Commune	Temporary Agreements				Supporter	Funding Source	Listed in CIP before DIW
		Project Name	Quantity	Unit	Est.Cost (K.Riels)			
	Prasat							
220506	Trapeang Prasat	Malaria blood test mission at remote villages	1	time	1400	Department of Health		<input type="checkbox"/>
220506	Trapeang Prasat	Semester meeting between kindergarten project committee and beneficiaries	2	time	172	Department of Women		<input type="checkbox"/>
220506	Trapeang Prasat	District level training on community kindergarten operation	1	time	300	Department of Women		<input type="checkbox"/>
220506	Trapeang Prasat	Semester meeting at provincial level to strengthen community kindergarten	2	time	136	Department of Women		<input type="checkbox"/>
220506	Trapeang Prasat	Vitamin supply for children	1	time	800	Department of Health		<input type="checkbox"/>
220506	Trapeang Prasat	Wells technique training	1	training	10	Cambodian Red Cross		<input type="checkbox"/>
Administration and Security								
220506	Trapeang Prasat	Mine field survey mission and visit demining land beneficiaries	1	time	608	Land Used Planning Unit		<input type="checkbox"/>
220506	Trapeang Prasat	Labor law dissemination	1	training	400	Department of Land Management, Urban Planning & Construction		<input type="checkbox"/>
220506	Trapeang Prasat	Demining land acquisition follow up and supervision	1	time	500	Land Used Planning Unit		<input type="checkbox"/>
220506	Trapeang Prasat	Land law dissemination	1	training	800	Department of Land Management, Urban Planning & Construction		✓
220506	Trapeang Prasat	Provincial workshop to approve demining plan	1	time	1060	Land Used Planning Unit		<input type="checkbox"/>
220506	Trapeang Prasat	District workshop for mine field data gathering and prioritizing	1	time	320	Land Used Planning Unit		<input type="checkbox"/>
220506	Trapeang Prasat	Commune meeting for mine field information gathering	1	time	92			<input type="checkbox"/>
Gender								
220506	Trapeang Prasat	Village female leaders forum preparation	2	training	840	Department of Women		<input type="checkbox"/>
220506	Trapeang	Annual provincial level workshop on	1	training	244	Department of Women		<input type="checkbox"/>

District Data Book 2009: Development Plans and Projects

Commune GIS	Commune	Temporary Agreements				Supporter	Funding Source	Listed in CIP befor DIW
		Project Name	Quantity	Unit	Est.Cost (K.Riels)			
	Prasat	WCFPs activities reflection						
220506	Trapeang Prasat	Dissemination of elimination of all forms of discrimination against women	1	time	240	Department of Women		<input type="checkbox"/>
220506	Trapeang Prasat	CWCC meeting on gender mainstreaming in sector plans	1	time	240	Department of Women		<input type="checkbox"/>
220506	Trapeang Prasat	District and commune woman focal point capacity strengthening	1	time	88	Department of Women		<input type="checkbox"/>
220506	Trapeang Prasat	Trafficking of women/children control activity strengthening	1	training	240	Department of Tourism		<input checked="" type="checkbox"/>

Source: CDPD, District Level Detail TA resulting from DIW

8.3 Outputs, estimated and actual costs of C/S Fund Projects between 2005 and 2008, by Commune

Commune	Project Type	Budget Year	Output		Quantity	Unit	Unit Cost MR	
			Description	Type			Estimate	Actual
Bak Anloun	Rural Transport	2005	Earth road	New	2	Km	25.10	16.44
Bak Anloun	Rural Transport	2006	Earth road	New	2.55	Km	39.83	38.96
Bak Anloun	Rural Transport	2007	Earth road	New	2.069	Km	34.89	34.82
Bak Anloun	Rural Transport	2008	Earth road	New	2.45	Km	38.37	38.15
Ph'av	Rural Transport	2005	Laterite road	New	0.52	Km	5.16	17.66
Ph'av	Rural Transport	2005	Earth road	New	0.85	Km	14.60	17.66
Ph'av	Rural Transport	2005	Single pipe culvert	New	1	Place	1.82	17.66
Ph'av	Rural Transport	2006	Earth road	New	0.86	Km	12.53	20.67
Ph'av	Rural Transport	2006	Single pipe culvert	New	1	Place	1.79	20.67
Ph'av	Rural Transport	2006	Earth road	New	1.62	Km	22.27	22.12
Ph'av	Rural Transport	2006	Laterite road	New	0.52	Km	6.50	20.67
Ph'av	Rural Transport	2007	Earth road	New	1.2416	Km	25.35	25.27
Ph'av	Rural Transport	2007	Earth road	New	1.2416	Km	25.33	25.27
Ph'av	Rural Transport	2008	Earth road	New	0.87	Km	23.93	23.73
Ou Svay	Rural Transport	2005	Earth road	New	1	Km	15.37	12.62
Ou Svay	Rural Transport	2005	Single pipe culvert	New	2	Place	5.34	12.62
Ou Svay	Rural Transport	2006	Earth road	New	2.39	Km	29.86	29.55
Ou Svay	Rural Transport	2007	Earth road	New	1.74	Km	34.26	28.41
Ou Svay	Rural Transport	2007	Earth road	New	1.74	Km	34.28	28.41
Ou Svay	Rural Transport	2008	Earth road	New	0.958	Km	23.62	26.03
Ou Svay	Rural Transport	2008	Single pipe culvert	New	1	Place	2.50	26.03
Preah Pralay	Rural Transport	2005	Single pipe culvert	New	2	Place	4.62	16.68
Preah Pralay	Rural Transport	2005	Earth road	New	1.4	Km	20.31	16.68
Preah Pralay	Rural Transport	2006	Earth road	New	1.95	Km	29.68	29.58
Preah Pralay	Rural Transport	2007	Earth road	New	0.84	Km	24.63	28.57
Preah Pralay	Rural Transport	2007	Single pipe culvert	New	2	Place	4.53	28.57
Preah Pralay	Rural Transport	2008	Earth road	New	1.49	Km	27.27	26.73
Tumnob Dach	Rural Transport	2005	Earth road	New	1.45	Km	21.77	14.59
Tumnob Dach	Rural Transport	2006	Earth road	New	2.08	Km	31.75	31.00
Tumnob Dach	Rural Transport	2007	Earth road	New	1.885	Km	30.51	30.45
Tumnob Dach	Rural Transport	2008	Earth road	New	1.513	Km	30.04	29.60
Trapeang Prasat	Rural Transport	2005	Earth road	New	1.75	Km	23.49	14.96
Trapeang Prasat	Rural Transport	2006	Earth road	New	2.4	Km	33.97	33.55

Commune	Project Type	Budget Year	Output		Quantity	Unit	Unit Cost MR	
			Description	Type			Estimate	Actual
Trapeang Prasat	Rural Transport	2007	Earth road	New	1.878	Km	30.00	29.99
Trapeang Prasat	Rural Transport	2008	Earth road	New	1.172	Km	28.60	28.30

Source: PID

8.4 Total Expenditure on C/S Fund Projects by sector and commune between 2005 and 2008

Sector	Total Cost in Million Riels					
	Bak Anloun	Ph'av	Ou Svay	Preah Pralay	Tumnob Dach	Trapeang Prasat
Rural Transport	128.37	91.79	96.62	101.56	105.64	106.80

Source: PID

8.5 Actual 2009 C/S Fund projects by Commune

Source: PID

9 District level Projects from 2006 to 2009

District Initiative Projects (DIPs) are funded by Danida, DFID and PSDD (UNDP, DFID and SIDA).

Funding for 2006-2008

Between 2006 and 2008 there were 14 provinces funded by PSDD and 10 by Danida and DFID. The list of provinces and who funded these is below

Danida and DFID funded DIPs:

Kampong Cham	Kampong Speu	Koh Kong	Kratie	Monduliri
Pursat	Ratanakiri	Siem Reap	Sihanoukville	Kep

PSDD funded DIPs:

Banteay Meanchey	Battambang	Kampong Chhnang	Kandal	Phnom Penh
Prey Veng	Svay Rieng	Takeo	Kampong Thom	Preah Vihear
Stung Treng	Kampot	Oddar Meanchey	Pailin	

Funding for 2009

In 2009 there was a change to the number of provinces funded by the two streams. Danida and DFID were still funding the same 10 provinces they had been funding the previous three years, but two more provinces were added *Kampong Thom and Kampot*. Now PSDD funds 12 provinces and Danida and DFID fund 12.

9.1 District Initiative Infrastructure Projects from 2006 to 2009

9.1.1 District Initiative Infrastructure Projects for 2006 to 2008

No District Initiative Infrastructure Projects were implemented in this district for 2006-2008

9.1.2 District Initiative Infrastructure Projects in 2009

No District Initiative Infrastructure Projects have been implemented in this district for 2009

9.2 District Initiative Service Projects from 2006 to 2009

9.2.1 District Initiative Service Projects for 2006 to 2008

No District Initiative Service Projects were implemented in this district for 2006-2008

9.2.2 District Initiative Service Projects in 2009

No District Initiative Service Projects have been implemented in this district for 2009

9.3 Inter Commune Council Projects in 2008 and 2009

9.3.1 ICC Projects in 2008

No ICC projects in this district at this time

9.3.2 ICC Projects in 2009

No ICC projects in this district at this time

Source: ICC project, Ministry of Interior (DoLA), -UNDP project for Local Governance – DDLG

9.4 Other Projects in 2008 and 2009

9.4.1 RPRP

There are no RPRP projects being implemented in this district or province at this time. The RPRP is only being implemented in Svay Rieng and Prey Veng

9.4.1.1 RPRP Projects from 2006 to 2008

No RPRP projects in this district at this time

9.4.1.2 RPRP Projects in 2009

No RPRP projects in this district at this time

9.4.2 Seth Korma

9.4.2.1 Seth Koma 2007

Description of Outputs/Activities	Budget (1 US\$ = 4000 Riels)
1.1 Monthly CCWC meeting	\$1,008
1.2 Quarterly CCWC meeting	\$658
1.3 Operation support cost	\$3,600
1.4 Village meeting on Child Rights and child protection	\$693
1.5 Village meeting on Immunization, health issues	\$693
1.6 village meeting on Education	\$693
1.7 Incentive CPS teachers for 10 months	\$10,050
1.8 Monitoring the functioning of CPS classes	\$536
1.9 Awareness raising on women and child rights	\$4,800
GRAND TOTAL	\$22,731

*Source: UNICEF***9.4.2.2 Seth Koma 2008**

Description of Outputs/Activities	Budget (1 US\$ = 4000 Riels)
Community able to identify and articulate critical development needs for children.	
CCWC monthly meetings (24 Communes)	\$1,008
CCWC quarterly meetings (24 Communes)	\$462
Operational support (24 Communes)	\$3,600
Village meeting on child rights and child protection (24 Communes)	\$693
Village meeting on health issues (24 Communes)	\$693
Village meeting on education (24 Communes)	\$693
Incentive for CPS teachers (22 Communes)	\$10,050
Monitoring the functioning of CPS classes (22 Communes)	\$536
Campaign on woman and child right (24 Communes)	\$4,800
Sub-total for all outputs	\$22,535
Contingency cost	\$196
GRAND TOTAL	\$22,731

Source: UNICEF

9.4.2.3 Seth Koma 2009

Description			Anlong Veaeng	Banteay Ampil	Chong Kal	Trapeang Prasat	Samraong	Total
# Comm.			5	4	4	6	5	24
# Village			47	74	25	38	47	231
Activity and budget	Ope. costs CCWC	Comm.	5	4	4	6	5	24
		Budget	\$1,000	\$800	\$800	\$1,200	\$1,000	\$4,800
	CPS	Village	27	10	25	28	13	103
		Budget	\$3,645	\$1,314	\$3,375	\$3,780	\$1,755	\$13,869
	Parenting Education	Village	47	10	25	38	17	137
		Budget	\$2,961	\$630	\$1,806	\$2,934	\$1,071	\$9,402
	CLTS	Village	0	27	0	0	13	40
		Budget	\$0	\$7,365	\$0	\$0	\$3,079	\$10,444
	PHAST	Village	0	15	4	0	0	19
		Budget	\$0	\$3,095	\$731	\$0	\$0	\$3,826
	Special health intervention	Support MMR	5	4	4	6	5	24
		Budget	\$1,000	\$800	\$800	\$1,200	\$1,000	\$4,800
	Outreach	Comm	1	1	0	1	0	3
		Budget	\$504	\$1,512	\$0	\$756	\$0	\$2,772
	Discretionary Fund	Comm.	1	1	0	1	0	3
		Budget	\$500	\$500	\$0	\$500	\$0	\$1,500
Village Mapping			\$66	\$162	\$0	\$81	\$0	\$309
Total			\$9,676	\$16,178	\$7,512	\$10,451	\$7,905	\$51,722

Source: UNICEF

SECTION D: SERVICES AND ORGANIZATIONS

10 Infrastructure

10.1 Length of and Expenditure on Roads in 2008, by District

Roads	OMC	Anlong Veng	Banteay Ampil	Chongkal	Samrong	Trapeang Prssath
Length of paved road in the district	108	40	0	0	30	38
Length of unpaved roads in the district	259	18	12	39	190	0
Amount spent on construction of roads in 2008	555,074	37,043	34,838	41,613	400,276	41,305
Amount spent on repair and rehabilitation of roads in 2008	1,172,373	36,089	26,172	92,693	1,017,419	0

Note 1: Please note that these data are not necessarily complete or correct. The data are derived from government agencies at provincial and district level which used different recording systems, did not always have complete data or were, sometimes, less than willing to share their data.

Note 2: Please be aware that these data are incomplete due to the fact that the amounts for the construction, repair and rehabilitation recorded reflect only funds provided by the government, not the contributions by any other parties.

10.2 Scale of and Expenditure on Irrigation in 2008, by District

Irrigation	OMC	Anlong Veng	Banteay Ampil	Chongkal	Samrong	Trapeang Prssath
Number of irrigation schemes operating in 2008	9	3	2	2	2	n/a
Total nr of hectares under irrigation in dry season 2008	450	140	100	110	100	n/a
Total funds spent in 2008 on construction of irrigation systems	626,708	278,695	198,881	73,660	75,471	n/a
Total funds spent in 2008 on rehabilitation/repair of irrigation systems	18,530	9,400	3,500	2,530	3,100	n/a
Total funds spent in 2008 on operation and maintenance	645,238	288,095	202,381	76,190	78,571	n/a

Note 1: Please note that these data are not necessarily complete or correct. The data are derived from government agencies at provincial and district level which used different recording systems, did not always have complete data or were, sometimes, less than willing to share their data.

Note 2: Please be aware that the data above are incomplete as these only reflect funds provided by the government, not the contributions by farmers or other parties.

10.3 Power Supply in 2008, by District

Electricity	OMC	Anlong Veng	Banteay Ampil	Chongkal	Samrong	Trapeang Prssath
Total number of electricity connections to households	3,503	950	n/a	305	2,043	205
Total number of electricity connections to agencies, companies, organizations	86	10	n/a	7	66	3
Total volume in KWh of electricity consumed last in 2008	9,901,263	90,455	n/a	16,115	9,785,880	8,813
Total amount collected from users for consumed electricity	2,941,229	43,074	n/a	7,674	2,886,285	4,197
Per capita electricity consumption in 2008 in Kwh	256	3	n/a	1	167	0

Note 1: Please note that these data are not necessarily complete or correct. The data are derived from government agencies at provincial and district level which used different recording systems, did not always have complete data or were, sometimes, less than willing to share their data.

Note 2: These data only record electricity provided by electricity companies and does not include homes powered by generators or batteries (for this information see Section B: General Profile, Part 1: General Information; table 1.3.1 and chart 1.3.4).

Note 3: In most provinces electricity is only provided through town-based networks

Note 4: Per capita consumption is calculated by dividing the total volume of electricity produced in 2008 by the number of people living in each district as per the 2008 census (for the provincial data it is calculated against the number of people living in the province)

11 Health Facilities

Please note that the Operational District (health) boundaries are different to the administrative district boundaries. Therefore the data provided here shows the facilities, staff, NGOs etc in each Operational District within the province NOT the administrative district.

Acronyms

Com Cov	Commune Covered	MW2	Secondary Midwives
CPA	Complementary Package of Activities	NU1	Primary Nurse
Dr	Doctor	NU2	Secondary Nurse
FDH	Former District Hospital	OD	Operational District
HC	Health Center	Others	Other Staff
HC (NB)	Health Center no building	PHD	Provincial Health Department
HP	Health Post	Pop 04-05	Population Covered 2004 or 2005
MA	Medical Assistant	RH	Referral Hospital
MPA	Minimum Package of Activities	Vil Cov	Village Covered
MW1	Primary Midwives	VIL-HC	Distance from Village to Health Center

11.1 Health Facilities in the Province, by Operational District

Otdar Mean Chey	OD	RH	HC	HP
Samraong	1	1	14	
Total	1	1	14	0

11.2 Health Facilities and Staff in the province, by Operational District

This table shows health facilities, staff and coverage of health facilities in each operational district.

No	Facility Name	Type	Class	Dr	Ma	Nu2	Nu1	Mw2	Mw1	Others	Com Cov	Vil Cov	Pop. 04-05
Samraong													
1	Ampil	FDH	MPA	0	0	5	7	0	2	2	1	23	10,203
2	Anlong Veaeng	FDH	MPA	2	1	15	20	1	1	5	4	36	19,883
3	Beng	HC	None MPA	0	0	1	10	0	0	3	1	16	8,657
4	Bos Sbov	HC	MPA	0	0	1	1	1	0	2	1	7	3,098
5	Chong Kal	FDH	MPA	0	0	4	5	0	3	3	2	14	11,068
6	Kaun Kriel	HC	MPA	0	0	1	2	0	0	3	4	23	12,379
7	Kouk Khpos	HC	MPA	0	0	1	10	0	0	3	3	19	7,599
8	Kouk Mon	HC	MPA	0	0	1	2	2	1	4	3	12	7,660
9	Ou Smach	HC	MPA	0	1	1	2	0	0	2	2	9	6,735
10	Pongro Ta Paen	HC	None MPA	0	0	4	5	0	3	3	2	10	7,141
11	Samraong	HC	MPA	0	0	1	1	0	1	3	3	20	19,310
12	Trapeang Prasat	HC	MPA	0	0	3	5	0	1	1	2	14	8,223
13	Trapeang Prei	HC	MPA	0	0	3	2	0	1	3	2	16	6,599
Total:				2	2	41	72	4	13	37	30	219	128,555

Source: MEDiCAM – Infrastructure - (http://www.medicam-cambodia.org/hsi/health_system/srch/index.asp?cboLcn=6&cmdSearch=Search&cboCHName=&cboType=)

11.3 Deliveries in 2007 in the Province, by Operational District

OD	Deliveries	Deliveries at home		Deliveries	Total deliveries	Total deliveries
	at HC	By Health Staff	ByTBAs	at RH	by Health Staff	by health staff and TBAs
Samraong	1330	310	1310	209	1849	3159
<i>Sub-total</i>	<i>1330</i>	<i>310</i>	<i>1310</i>	<i>209</i>	<i>1849</i>	<i>3159</i>

Source: MoH, Annual Statistics 2007

12 Education³

12.1 Schools, Classes, Students, Staff, for all levels, for 2007/2008 by District

District	Number of Schools	Disadv. Schools	Number of Classes	Classes in Pagoda	Enrollment		Repeaters		Teaching Staff		Non-Teaching Staff		Total Staff	
					Total	Girl	Total	Girl	Total	Female	Total	Female	Total	Female
Anlung Veng	30	1	240	0	9,036	4,165	947	419	151	35	25	5	176	40
Banteay Ampil	59	6	345	0	11,417	5,216	1,596	731	229	24	40	1	269	25
Chong Kal	31	1	174	0	6,019	2,956	706	298	124	31	26	5	150	36
Samrong	42	0	314	0	12,155	5,725	1,269	527	229	80	39	7	268	87
Trapaing Prasat	27	4	197	0	6,522	2,966	788	347	127	31	27	2	154	33
Whole Province	189	12	1,270	0	45,149	21,028	5,306	2,322	860	201	157	20	1,017	221
- Urban Area	42	0	314	0	12,155	5,725	1,269	527	229	80	39	7	268	87
- Rural Area	117	11	716	0	23,958	11,138	3,090	1,376	480	86	93	8	573	94
- Remote Area	30	1	240	0	9,036	4,165	947	419	151	35	25	5	176	40

12.2 Characteristics of Schools and School Principals for 2007/2008 by Commune

Commune	Number of Schools				2 - Shift	Floating	Schools	Attached	Schools Without			Characteristics of School Principals (Incharge)			
	Pre-Sch	Primary	College	Lycee	Schools	Schools	in Pagoda	Pre-Sch	Water Sup.	Latrine		Avg. Age	Avg. Service	U.Sec+ Ed.	Female
Bak Anloun	0	2	0	0	2	0	0	0	0	0		31.3	11.5	0	0
Ph'av	1	5	0	0	5	0	0	1	1	1		41.4	8.0	0	0
Ou Svay	0	3	0	0	3	0	0	0	0	1		50.6	9.0	0	0
Preah Pralay	0	2	0	0	2	0	0	0	0	0		51.8	8.5	0	0
Tumnob Dach	1	2	1	0	2	0	0	1	2	1		38.3	10.8	0	0
Trapeang Prasat	1	8	0	1	7	0	0	1	3	4		43.0	7.2	1	0

³ All the data for section 12 comes from the Ministry of Education, Youth and Sport (MoEYS)

12.3 Enrolment by Level of Education, 2006/2007 by Commune

Commune	School	Pre school		Primary School		Lower Secondary School		Upper Secondary School		Enrolment	
		Total	Female	Total	Female	Total	Female	Total	Female	Total	Female
Bak Anloun	2	0	0	359	176	0	0	0	0	359	176
Ph'av	6	20	7	932	414	0	0	0	0	952	421
Ou Svay	3	0	0	714	322	0	0	0	0	714	322
Preah Pralay	2	0	0	518	228	0	0	0	0	518	228
Tumnob Dach	4	39	17	686	310	144	71	0	0	869	398
Trapeang Prasat	8	60	21	2243	1061	429	183	0	0	2732	1265

12.4 Enrolment by Level of Education, 2007/2008 by Commune

Commune	School	Pre school		Primary School		Lower Secondary School		Upper Secondary School		Enrolment	
		Total	Female	Total	Female	Total	Female	Total	Female	Total	Female
Bak Anloun	2	0	0	310	138	0	0	0	0	310	138
Ph'av	6	22	10	959	438	0	0	0	0	981	448
Ou Svay	3	0	0	805	360	0	0	0	0	805	360
Preah Pralay	2	0	0	419	192	0	0	0	0	419	192
Tumnob Dach	4	38	22	706	309	192	90	0	0	936	421
Trapeang Prasat	10	60	26	2398	1124	539	237	74	20	3071	1407

12.5 Aspects of Enrolment for 2007/2008 by Commune

Commune	% Repeaters (Total)			% Over-age Enrollment (Total)			% Repeaters (Girl)			% Over-age Enrollment (Girl)		
	Primary	L.Sec.	U.Sec.	Primary	L.Sec.	U.Sec.	Primary	L.Sec.	U.Sec.	Primary	L.Sec.	U.Sec.
Bak Anloun	8.7	0.0	0.0	35.8	0.0	0.0	6.5	0.0	0.0	33.3	0.0	0.0
Ph'av	23.7	0.0	0.0	38.8	0.0	0.0	21.5	0.0	0.0	34.7	0.0	0.0
Ou Svay	16.4	0.0	0.0	29.2	0.0	0.0	15.6	0.0	0.0	29.4	0.0	0.0
Preah Pralay	10.3	0.0	0.0	39.6	0.0	0.0	9.4	0.0	0.0	43.2	0.0	0.0
Tumnob Dach	15.2	0.0	0.0	38.1	67.2	0.0	15.9	0.0	0.0	33.3	60.0	0.0
Trapeang Prasat	10.5	0.2	0.0	27.4	62.7	55.4	10.8	0.0	0.0	25.5	54.0	50.0

12.6 School Buildings for all schools in the District for 2007/2008, by Commune

Commune	Total Number of		Concrete/Brick Structure		Wooden Structure		Bamboo Structure		New Buildings		Buildings Without Good		
	Buildings	Rooms	Buildings	Rooms	Buildings	Rooms	Buildings	Rooms	Repaired	Constructed	Floor	Roof	Wall
Bak Anloun	4	8	0	0	2	6	2	2	0	0	2	2	2
Ph'av	6	27	4	19	1	6	1	2	0	0	1	1	0
Ou Svay	6	17	1	5	1	5	4	7	0	0	4	4	4
Preah Pralay	2	9	2	9	0	0	0	0	0	0	0	0	0
Tumnob Dach	6	22	3	18	0	0	3	4	4	0	6	3	4
Trapeang Prasat	24	72	8	40	8	22	8	10	2	2	12	12	13

12.7 Conditions of Classrooms and Existence of Separate School Office and Library, by Commune

Commune	Number of Class rooms	Number of Classrooms			Classrooms Without Good			Number of Furniture needed				Schools with Separate	
		in Pagoda	New Repaired	New Constr.	Floor	Roof	Wall	Desks	Chairs	Black-board	Teacher Table	Office	Library
Bak Anloun	6	0	0	0	2	2	2	0	0	0	0	1	0
Ph'av	24	0	0	0	5	5	0	0	0	0	0	5	0
Ou Svay	15	0	0	0	7	7	7	175	175	8	7	2	0
Preah Pralay	7	0	0	0	0	0	0	0	0	0	0	1	0
Tumnob Dach	18	0	5	0	15	4	9	50	50	2	4	1	1
Trapeang Prasat	59	0	8	11	16	16	22	362	362	27	38	2	2

12.8 Community Participation and Financing across all schools in the District for 2007/2008 by Commune

Commune	Parent Association				Commu. Teachers	Teaching Monks	PAP Fund (Riel)		Number of Schools Obtaining Funds from				
	Exists	Held Meet	Total	Female			per Student	per School	Sch. Income	Community	Gvt. For building	Abroad	IOs/NGOs
Bak Anloun	2	2	6	0	0	0	9,247	1,659,800	0	1	0	0	0
Ph'av	6	6	5	1	0	0	10,938	1,733,625	0	0	0	0	0
Ou Svay	3	3	5	1	0	0	7,154	1,702,733	1	1	0	0	0
Preah Pralay	2	2	6	1	0	0	5,922	1,533,850	0	0	0	0	1
Tumnob Dach	3	3	5	1	0	0	10,016	1,031,667	0	1	0	0	0
Trapeang Prasat	10	10	4	1	0	0	7,818	2,611,099	0	3	0	0	0

12.9 Percentage Student Flow Rates and Graduation by level 2006/2007, by Commune

Commune	Primary Level (Grades 1-6)			Lower Secondary Level (Grades 7-9)			Upper Secondary Level (Grades 10-12)			Successful Candidates		
	Promotion	Repetition	Dropout	Promotion	Repetition	Dropout	Promotion	Repetition	Dropout	Grade 6	Grade 9	Grade 12
Bak Anloun	69.4	7.5	23.1	0.0	0.0	0.0	0.0	0.0	0.0	21	0	0
Ph'av	63.7	24.4	11.9	0.0	0.0	0.0	0.0	0.0	0.0	40	0	0
Ou Svay	65.1	18.5	16.4	0.0	0.0	0.0	0.0	0.0	0.0	34	0	0
Preah Pralay	63.9	8.3	27.8	0.0	0.0	0.0	0.0	0.0	0.0	25	0	0
Tumnob Dach	76.8	15.6	7.6	83.3	0.0	16.7	0.0	0.0	0.0	45	0	0
Trapeang Prasat	75.7	10.4	13.9	87.9	0.2	11.9	0.0	0.0	0.0	168	83	0

13 Staff and Resources at the District

This chapter presents data from the District Information System, collected around the middle of 2009 unless otherwise specified.

13.1 District Councilors elected in 2009

Name	Sex	Year of Birth	Function	Phone
ងៃ សារិន	M	1951	Chairperson of The Council	092-228 104
អ៊ុង វ៉ែន	M	1951	Councillor	
ប៊ុន ពិន	M	1956	Councillor	099-447 736
គឹម សាម៉េត	M	1956	Councillor	012-941 385
ចាន់ ស៊ាន	M	1954	Councillor	011-256 280
អ៊ុង ផន	M	1952	Councillor	
ព្រំ យឹម	M	1957	Councillor	017-385 963
ស៊ឹម ចំរើន	M	1955	Councillor	011-508 653
ជា ណន	M	1954	Councillor	011-336 390
ស៊ីង សារឿន	M	1956	Councillor	012-546 421
យិន អាត	M	1951	Councillor	017-918 004
ជាន់ ប៊ុរី	F	1956	Councillor	092-224 843
រឿង ស៊ុន	M	1958	Councillor	085-658 872

13.2 Committees of the Council

Please note at the time of producing the district data books the composition of the committees was not known for all district councils and therefore data were not available for 13.2.1, 13.2.2, 13.2.3.

13.2.1 Technical Facilitation Committee

13.2.2 Women's and Children's Affairs Committee

13.2.3 Procurement Committee

13.3 Board of Governors

Name	Sex	DoB	Function	Salary Level	Body	Phone
វណ្ណ កុសល	M	1952	District Governor	ខ.២.១២	Medium Civil Servant	011-417 605
សៅ ថាន	M	1953	District Deputy Governor	ខ.១.៣	Medium Civil Servant	011-612 324
ទុយ សារ៉ុម	M	1961	District Deputy Governor	ខ.៣.១៣	Medium Civil Servant	012-957 082
យន់ សេរីរដ្ឋ	M	0000	District Deputy Governor			011-738 899

13.4 Offices under Sala Krong, Sala Srok and Sala Khan

Office Name	Chief		Deputy Chief		No. of Staff				Office Area (m2)	No of vehicle (public or program)	
					State		Contract			vehicle	moto
	M	F	M	F	M	F	M	F			
District/ Khan Cabinet	1	0	1	0	0	0	0	0	18	0	2
Adminnistration Office	1	0	1	0	1	0	0	0	36	0	0
Economy Office	0	1	1	0	1	0	0	0	18	0	0
Social Affair Office	1	0	1	0	0	0	0	0	18	0	0

13.5 Municipality/District/Khan line offices

Office Name	Chief		Deputy Chief		No. of Staff				Office Area (m2)	No of vehicle (public or program)	
					State		Contract				
	M	F	M	F	M	F	M	F		vehicle	moto
District/ Khan Police Headquarter	1	0	4	0	98	0	0	0	108	1	0
District/ Khan Military Police Headquarter	1	0	3	0	22	0	0	0	108	1	0
Planning Office	1	0	0	0	0	0	0	0	Borrow	0	1
Rural Development Office	1	0	0	0	0	0	0	0	Borrow	0	0
Women Affairs Office	0	0	0	0	0	0	0	1	Borrow	0	1
Environment Office	1	0	0	0	0	0	0	0	Borrow	0	0
Education Office	1	0	1	0	6	1	0	0	216	0	2
District/ Khan Operational Office	2	0	2	0	8	4	0	0	Borrow	0	7
Agriculture Office	1	0	1	0	8	0	0	0	108	0	2
Social Affairs Office	0	1	0	0	0	0	0	0	Borrow	0	0
Culture Office	1	0	0	0	0	0	0	0	Borrow	0	0
Cult and Religion Office	1	0	0	0	0	0	0	0	Borrow	0	0
Information Office	1	0	0	0	0	0	0	0	Borrow	0	0
Public Work Office	1	0	0	0	0	0	0	0	Borrow	0	0
Lan Management Office	1	0	1	0	0	0	0	0	Borrow	0	1
Water Resources Office	1	0	0	0	0	0	0	0	Borrow	0	0
Commerce Office	0	1	0	0	0	0	0	0	Borrow	0	0

13.6 Properties and Equipment of District Administration

13.6.1 Buildings

Description	Unit	Number	Remark
Office building type			
- Concrete	building	0	
- Wood	building	1	
- Mixed	building	0	
Total floor space	m2		
- Concrete	m2	0	
- Wood	m2	432	
- Mixed	m2	0	
Building condition			
- Concrete	%	0	
- Wood	%	50	
- Mixed	%	0	
Office reserved land area	m2	20,000	
Total office land area	m2	5,000	

13.6.2 Means of Transport available at the District Administration

Description	Unit	Number	Remark
Vehicle (type, size and condition)	Vehicle	0	
Motorcycle (type, size and condition)	Motor	0	

13.6.3 Equipment in District Offices

Description	Unit	Number	Remark
Generator	per set	0	
Photocopy machine at the office	per set	1	
Private photocopy machine at the district town	place	2	
Telephone network (mobile line service)	network	4	
Telephone network (land line service)	network	0	
Fax (include Fax number)	per set	0	
Computer	per set	1	
Printer	per set	2	
Scanner	Per set	0	
Number of computers those can access Internet and email services in the municipality/ district/khan office (including the technical line offices (please provide the email address)	set	0	
Typewriters (including the technical line offices)	per set	0	
Staff of Municipality/district/khan office can use computer	person	4	

13.6.4 Equipment and facilities at the District Town

Description	Unit	Number	Remark
Availability of electricity at noon	Nr Hours	8	
Private internet and email services in the municipality/ district/khan town.	place	0	

13.7 Registered Revenue of the District Administration in 2008⁴

Sources of Revenue	Revenue Collecting Agency	Estimated annual revenue (In Riels)
Slaughter Hosue	Provincial Department of Agriculture	12,000,000
Patent	District/ Khan Taxation Unit	20,600,000
Tax imposed on merchants	District/ Khan Taxation Unit	12,600,000

13.8 Services in the District

13.8.1 Public Sector Services

Type of Infrastructure/services	Unit	Number	
		Public	Private
Schools			
Pre-school	room	4	0
Primary School	room	149	0
Secondary school	room	24	0
High School	room	4	0
University	room		
Health			
Health post	place		
Health center	place	2	0
Referral Hospital	bed		

13.9 Civil Society Organizations active in the District

13.9.1 NGOs, Associations, Programs and Projects

Name	Abbr.	Sector Activities	No. of Target Communes	No. of Target Villages	Office in District
NA	KBA	កសិកម្ម និងសង្គម	0	0	No
NA	BFD	គាំទ្រកុមារក្រីក្រ	6	6	No
NA	ZOA	គ្រោះមហន្តរាយ	4	21	No
Cambodia Red Cross	CRC	សង្គមកិច្ច	5	9	No
UNICEF	UNICEF	សង្គមកិច្ច	6	38	No
NA	UNFPA	យេនឌ័រ និងសុខភាពបន្តពូជ	6	38	No
NA	CHHRA	សង្គមកិច្ច	2	13	No

13.9.2 Political Parties active in the Municipality, District and Khan

Name	Abbr.	Office in District
Cambodian People Party	CPP	Yes
FUNCINPEC Party	FUNCINPEC	Yes
Human Rights Party	HRP	Yes
SAM RAINSY Party	Sam Rainsy Party	Yes

⁴ Please note that the data in this table are at best estimates. If the table appears blank it does not mean there is no revenue, just that the data have not been recorded/entered.

13.10 Private Sector Organizations

13.10.1 Registered Companies in 2008, by District

On private sector at commune and/or district level	OMC	Anlong Veng	Banteay Ampil	Chongkal	Samrong	Trapeang Prssath
Businesses and Companies						
Number of registered agricultural enterprises (except family farms)	7	1	0	1	4	1
Number of registered shops, restaurants, transporters and other services	28	14	0	0	14	0
Number of manufacturing companies	35	10	0	0	23	2
Number of registered forestry enterprises	11	2	2	2	3	2
Number of registered mining companies	6	1	1	2	0	2
Number of financial institutions (ACELEDA, Thanakea Phum, AMK)	3	0	0	0	3	0
Number of other commercial institutions	-	n/a	n/a	n/a	n/a	n/a
Estimated number of informal enterprises (not registered)	8	3	n/a	n/a	5	n/a
Employment						
Number of people employed in 2008 by companies or any other enterprises	1,545	100	20	70	1,305	50
Investment						
Amount invested in 2008 by private sector	14,165,714	57,143	0	0	14,095,238	13,333
Markets						
Number of markets, operating at least weekly	7	2	1	1	2	1

Note: These data are not comprehensive as different companies and business are registered with different departments and not all departments were able or willing to provide detailed information. The number of informal enterprises reflects a rough estimate, made at provincial level and could not be verified.

Source: Unofficially collected at Provincial Level

13.10.2 Farmers in 2008, by District

Credit	OMC	Anlong Veng	Banteay Ampil	Chongkal	Samrong	Trapeang Prssath
Volume of credit provided to farmers in 2008	4,000	1,000	1,000	n/a	n/a	2,000
Number of farmers receiving credit in 2008	587	80	205	n/a	n/a	302
Volume of credit provided to companies in 2008	N/A	n/a	n/a	n/a	n/a	n/a

Note: Please note that these data are not necessarily complete or correct. The data are derived from government agencies at provincial and district level which used different recording systems, did not always have complete data or were, sometimes, less than willing to share their data.

Source: Unofficially collected at Provincial Level

SECTION E: POVERTY DATA

14 Data on Poverty

14.1 Predicted Poverty Rates for 2009, by commune

The **Predicted Family Poverty Rate** is based on a statistical model (robust multilevel mixed effect regression) at village level developed by the NCDD M&E Unit and uses CDB data for making an estimate of the predicted poverty rate (this is: *the portion of total families in the district or commune who are expected to be poor*) for the following year using current year data.

The basis for this predicted poverty rate also uses IDPoor (a project of the Ministry of Planning with technical assistance provided by GTZ) data

Commune	2004	2009
Bak Anloun	48.20%	37.60%
Ph'av	49.60%	45.20%
Ou Svay	52.10%	45.50%
Preah Pralay	50.90%	41%
Tumnob Dach	44.80%	37.10%
Trapeang Prasat	48.80%	38.70%

14.2 Poverty data from survey

14.2.1 Identification of Poor Households Program (IDPoor)

The Ministry of Planning IDPoor Program has developed standardized Procedures for Identification of Poor Households in rural areas. These Procedures are implemented using a participatory and consultative process by sub-national government structures and community representatives.

The IDPoor Program is managed by the Ministry of Planning (MOP), in cooperation with the Ministry of Interior's Department of Local Administration (DOLA). The program is supported by the Federal Republic of Germany, with technical assistance provided by German Technical Cooperation (GTZ). In 2009, AusAID also provided funding support to the Program.

Objective

The IDPoor Program aims to implement the Procedures for Identification of Poor Households in rural areas as widely as possible, in order to provide data on the level of poverty of areas and households that can be used by a large range of institutions and organizations for targeting services and development assistance to poor areas and poor households.

Coverage: During 2007, 2008 and 2009 the IDPoor Procedures have been implemented in 18 provinces (with partial or complete coverage), covering a total of around 7000 rural villages. The MOP and a number of NGO partners who are Health Equity Fund Operators have collaborated in collecting this data from different areas.

Categorization: Identified poor households are classified under two poverty categories: Poor Level 1 (very poor), and Poor Level 2 (poor). Households are classified based on data collected using a standard questionnaire, together with consideration by villagers of these households' special circumstances.

Further information: Please go to the IDPoor Program webpage at www.mop.gov.kh/Projects/IDPoor/tabid/154/Default.aspx

This District has not yet been covered by IDPoor